

Register by April 3 & save!



me

HEALTH

Information in an Interdependent World
May 3–8, 2013 • Boston, MA

MLA'13 | **ICML** | **ICAHIS** | **ICLC**

Medical Library Association ★ www.mlanet.org

Including the MLA Annual Meeting and Exhibition

The Premier Event in Health Sciences Information

Preliminary Program

One Health Top Sponsors

EBSCO



ELSEVIER

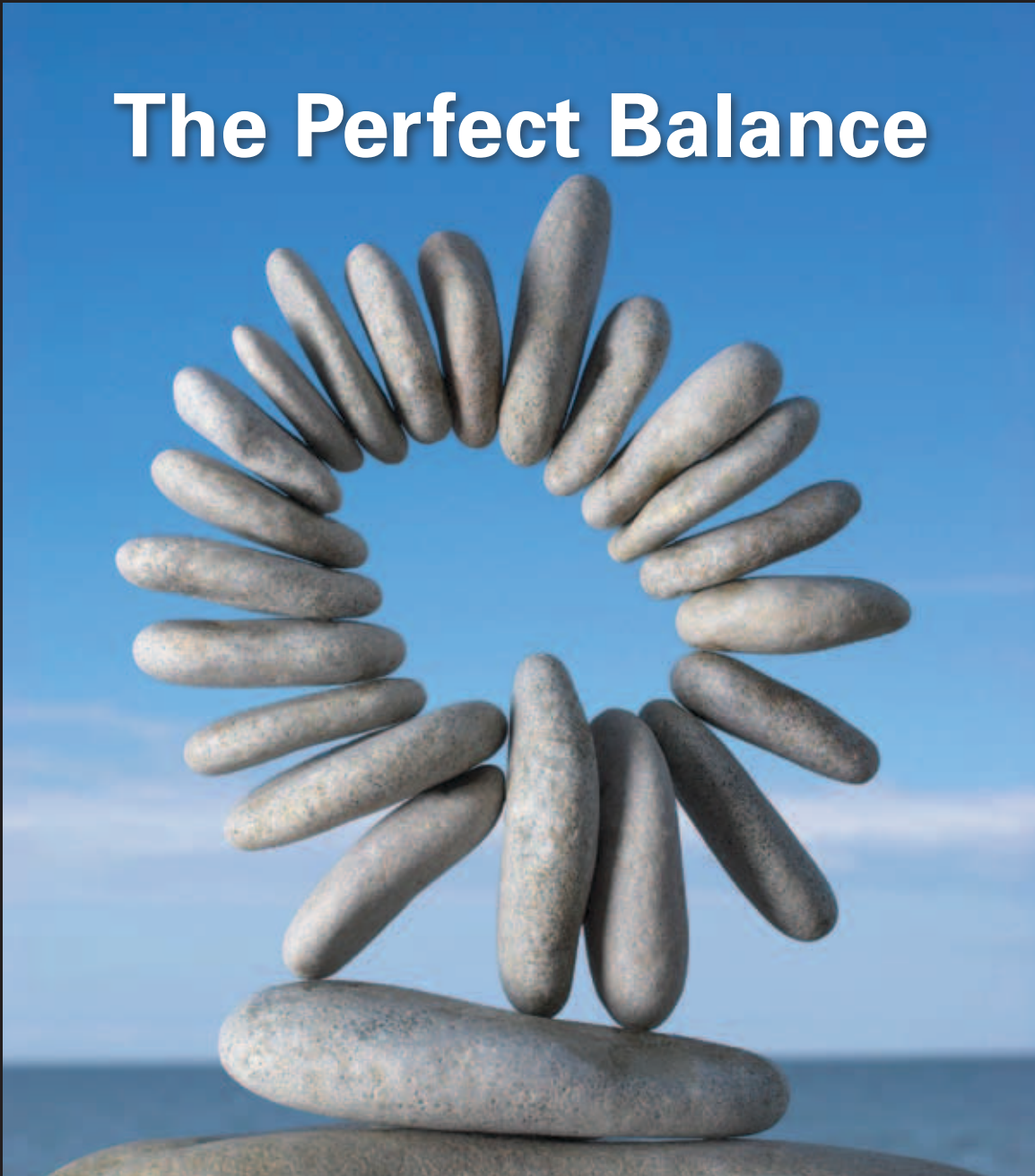
 Wolters Kluwer
Health

 **UpToDate.**



Make Wolper your partner for the sourcing and management of information resources and you will gain a trusted advisor, conscientious about both cost and quality, and "best in class" service overall.

The Perfect Balance



HIGH TECH, High Touch[®] : Next-Gen Technology. Personalized Service.



We invite you to find out more at www.wolper.com. Please contact us at **610.559.9550** or inquiries@wolper.com. We're just a phone call or a click away.

Invitation to Boston

You are invited to a very special meeting in Boston, “One Health: Information in an Interdependent World”! One Health, planned by a joint 2013 National Program Committee, is an international meeting incorporating the rich content of MLA ‘13 with its programs and continuing education and the 11th International Congress on Medical Librarianship (ICML), the 7th International Conference of Animal Health Information Specialists (ICAHIS), and the 6th International Clinical Librarian Conference (ICLC). This will be a grand opportunity to participate in an international meeting with more than 150 papers and 300 poster presentations—the most ever for an MLA meeting—representing authors from 30 countries and over 160 international presenters. The last time ICML was hosted in the United States was in 1995, so this is also a unique opportunity to connect with your international colleagues. MLA will also welcome 10 Cunningham Memorial International Grant recipients from various parts of the world.

Our meeting theme offers an exciting platform for MLA and international partners to explore the interconnectedness of global information. “One Health” is meant to encompass not only human and animal health, but also public health, environmental health, climate change, food safety and production, and international policy—emphasizing interdisciplinary and international collaboration. The concurrent sessions and special events will all take place during the usual timespan of an MLA national meeting, with plenary sessions bringing everyone together for the John P. McGovern Award Lecture, presidential address, Joseph Leiter NLM/MLA Lecture, Janet Doe Lecture, and final plenary session on Wednesday morning. Confirmed plenary speakers include Joanne Gard Marshall, AHIP, FMLA, as the 2013 Janet Doe Lecturer, Sheila Davis as the Leiter Lecturer, and Laurie Garrett as the final plenary session keynote speaker.

Because the Boston meeting is an international meeting, there are some additions to the usual national program. The Boston Local Assistance Committee is planning tours of local attractions and libraries for meeting attendees on Saturday, May 4, from 9:00 a.m.–5:00 p.m., and on Wednesday, May 8, from 1:00 p.m.–5:00 p.m. Offerings will include conducted tours as well as self-guided tours

of the Boston area’s many fine libraries and other attractions—including some offerings for accompanying persons. All meeting attendees are welcome to participate. Watch for the event announcements on the meeting website and on-line registration information. The International Cooperation Section will have a highly visible booth adjacent to the One Health Hospitality Booth at the entrance to the Hall of Exhibits to welcome international attendees and offer assistance during the meeting.

One Health attendees will have multiple opportunities to use social media to interact before, during, and after the meeting. We invite you to check out the social media link on the meeting website. We encourage international meeting attendees to review the US travel and visa requirements on the US Department of State website and visa information service at your earliest convenience (www.travel.state.gov/visa/).

The official opening day of One Health, the Boston international meeting, is Saturday, May 4, with the All-Conference Welcome Reception & Opening of the Hall of Exhibits. We hope to see you in Boston.



J. Michael Homan, AHIP, FMLA, Chair, and Heather Todd, Cochair, 2013 National Program Committee

Invitation	3	CE Courses	12
Schedule	5	One Health Sponsors	17
Featured Speakers	6	Program Sessions	18
Networking Events	8	How to Register	21
Services	10	Travel Information	24
Hall of Exhibits	11	Hotel	25



ANNUAL REVIEWS

Celebrating 80 Years of Publishing Excellence

VISIT
OUR BOOTH
AT MLA
2013!

Annual Reviews intelligently synthesizes critical literature in the Biomedical, Life, Physical, and Social Sciences, including Economics. Our editors and authors are premier contributors to their fields. Your patrons can rely on **Annual Reviews** to assess the available research and deliver the ideas that matter, to cut out the noise, and to meet their research needs efficiently and in a timely manner.

SECURE A SITE LICENSE FOR YOUR PATRONS TODAY.

Visit www.annualreviews.org or email sitelicense@annualreviews.org.

NEW FROM ANNUAL REVIEWS!

Annual Review of Animal Biosciences

Volume 1 • February 2013 • Online & In Print • <http://www.annualreviews.org/journal/animal>

Co-Editors: **Harris A. Lewin**, *University of California, Davis*
R. Michael Roberts, *University of Missouri*

The *Annual Review of Animal Biosciences*, publishing in February 2013, will place a particular emphasis on biotechnology, genetics, genomics, and breeding, as well as veterinary medicine, especially veterinary pathobiology, infectious diseases and vaccine development, and conservation and zoo biology. This journal is intended for scientists focused on wild and domesticated animal species, veterinarians, conservation biologists, and geneticists.

Complimentary online access to the first volume will be available for the first year.

ANNUAL REVIEWS | Global. Mobile. Relevant Research.

Tel: 800.523.8635 (US/CAN) | Tel: 650.843.6647 | Fax: 650.424.0910 | Email: sitelicense@annualreviews.org



Items in blue may be of particular interest to international attendees.

Most breaks include refreshments in the Hall of Exhibits.

ICML = 11th International Congress on Medical Librarianship

ICAHIS = 7th International Conference of Animal Health Information Specialists

ICLC = 6th International Clinical Librarian Conference

Informal Meetings = Affiliated & nonprofit group meetings & exhibitor meetings

MLA Unit Meetings = Committee, chapter, section business, section informal, & special interest group (SIG)

CE = Continuing education courses

Schedule

	Friday, May 3	Saturday, May 4	Sunday, May 5	Monday, May 6	Tuesday, May 7	Wednesday, May 8
7 a.m.			<ul style="list-style-type: none"> • YBP Health Walk 6:30 a.m. • Informal Meetings • MLA Unit Meetings • New Members Program • Sunrise Seminars • Sunrise Yoga 7–9 a.m. 	<ul style="list-style-type: none"> • Informal Meetings • MLA Unit Meetings • Sunrise Seminars 7–9 a.m. 	<ul style="list-style-type: none"> • Informal Meetings • MLA Unit Meetings • Sunrise Seminars 7–9 a.m. 	<ul style="list-style-type: none"> • Informal Meetings • MLA Unit Meetings • MLA Unit Meetings 7–9 a.m.
8 a.m.						
9 a.m.			<ul style="list-style-type: none"> • Plenary Session 1 Welcome and MLA Presidential Address 9–10 a.m. 	<ul style="list-style-type: none"> • Plenary Session 3 Janet Doe Lecture 9–10 a.m. 	<ul style="list-style-type: none"> • MLA Business Meeting 2 & MLA Presidential Inaugural Address 9–10 a.m. 	<ul style="list-style-type: none"> • Leiter Lecture 9–10 a.m.
10 a.m.		<ul style="list-style-type: none"> • MLA Unit Meetings • Section/Chapter Councils 	<ul style="list-style-type: none"> • Break 10–10:30 a.m. 	<ul style="list-style-type: none"> • Break in Exhibit Hall 10–10:30 a.m. • Exhibits 10 a.m.–noon 	<ul style="list-style-type: none"> • Break in Exhibit Hall 10–10:30 a.m. • Exhibits 10 a.m.–3 p.m. 	<ul style="list-style-type: none"> • Break 10–10:30 a.m.
10:30 a.m.	<ul style="list-style-type: none"> • CE Courses 8 a.m.–5 p.m. 	<ul style="list-style-type: none"> 8 a.m.–4 p.m. • CE Courses 8 a.m.–5 p.m. 	<ul style="list-style-type: none"> • Plenary Session 2 McGovern Lecture 10:30 a.m.–noon 	<ul style="list-style-type: none"> • ICML 2 • Program Session 2 10:30 a.m.–noon 	<ul style="list-style-type: none"> • NLM Update 10:30–11:30 a.m. 	<ul style="list-style-type: none"> • Plenary Session 4 Joint Presentation by Chapters & Sections with the NPC 10:30 a.m.–noon
11:30 a.m.					<ul style="list-style-type: none"> • Visit Exhibits & Lunch 11:30 a.m.–1:30 p.m. • Poster Session 3 noon–1 p.m. 	
noon	<ul style="list-style-type: none"> • Board of Directors 9 a.m.–5 p.m. (continued from Thurs.) 	<ul style="list-style-type: none"> • Local Tours & Library Visits 9 a.m.–5 p.m. 	<ul style="list-style-type: none"> • Chapter Council Roundtables Luncheon noon–1:30 p.m. • Exhibits noon–5 p.m. • Poster Session 1 1:30–2:30 p.m. • ICAHIS 1 • ICML 1 1:30–3 p.m. 	<ul style="list-style-type: none"> • Awards Luncheon noon–1:30 p.m. 	<ul style="list-style-type: none"> • Poster Session 4 1:30–2:30 p.m. • ICLC 2 • MLA Legislative Update and Scholarly Communications Update 1:30–3 p.m. 	<ul style="list-style-type: none"> • MLA Board of Directors noon–1:30 p.m.
1 p.m.		<ul style="list-style-type: none"> • MLA Leaders Orientation 3–5 p.m. 		<ul style="list-style-type: none"> • Exhibits 1:15–5 p.m. • Poster Session 2 • AHIP Q&A 1:30–2:30 p.m. • ICLC 1 • ICAHIS 2 1:30–3 p.m. 	<ul style="list-style-type: none"> • Poster Session 4 1:30–2:30 p.m. • ICLC 2 • MLA Legislative Update and Scholarly Communications Update 1:30–3 p.m. 	
2 p.m.			<ul style="list-style-type: none"> • Informal Meetings • MLA Unit Meetings 2–3 p.m. • Break in Exhibit Hall 2:30–3 p.m. 	<ul style="list-style-type: none"> • Open Forums 2–3 p.m. • Break in Exhibit Hall 2:30–3 p.m. 	<ul style="list-style-type: none"> • Break in Exhibit Hall 2–2:30 p.m. • ICAHIS 4 • Informal Meetings • MLA Unit Meetings 2–3 p.m. 	<ul style="list-style-type: none"> • Local Tours & Library Visits 1–5 p.m. • CE Courses 1–6 p.m. • CE Committee 1:30 p.m.
3 p.m.			<ul style="list-style-type: none"> • MLA Business Meeting 1 3–4:30 p.m. 	<ul style="list-style-type: none"> • ICML 3 • Program Session 3 3–4:30 p.m. 	<ul style="list-style-type: none"> • Program Session 4 3–4:30 p.m. 	
4 p.m.					<ul style="list-style-type: none"> • ICLC 3 	
5 p.m.		<ul style="list-style-type: none"> • All-Conference Welcome Reception & Opening of the Hall of Exhibits 5:30–7:30 p.m. 	<ul style="list-style-type: none"> • Program Session 1 4:30–6 p.m. 	<ul style="list-style-type: none"> • ICAHIS 3 • Informal Meetings • MLA Unit Meetings • HLS Business Meeting & Ice Cream Social 4:30–6 p.m. 	<ul style="list-style-type: none"> • Informal Meetings • MLA Unit Meetings 4:30–6 p.m. 	
6 p.m.			<ul style="list-style-type: none"> • Library School Reunion 6–7 p.m. • International Visitors Reception 6–7:30 p.m. 		<ul style="list-style-type: none"> • Tech Trends Session 6–7:30 p.m. 	
7:30 p.m.					<ul style="list-style-type: none"> • Taste of Boston Party 7:30–10 p.m. 	

Featured Speakers

Sunday, May 5, 10:30 a.m.–noon

Invited John P. McGovern Award Lecturer: Richard Besser

Sponsored by EBSCO.

Richard Besser is ABC News’s senior health and medical editor, providing medical analysis and commentary for all ABC News broadcasts and platforms, including *World News with Diane Sawyer*, *Good Morning America*, and *Nightline*. Besser came to ABC News in 2009 from the Centers for Disease Control and Prevention (CDC), where he directed the Coordinating Office for Terrorism Preparedness and Emergency Response, with responsibility for all of the CDC’s public health emergency preparedness and emergency response activities. He has received many awards for his work in public health and volunteer service including the Surgeon General’s Medallion for his leadership during the H1N1 response.



Monday, May 6, 9:00 a.m.–10:00 a.m.

Janet Doe Lecturer: Joanne Gard Marshall, AHIP, FMLA

Joanne Gard Marshall, AHIP, FMLA, alumni distinguished professor, School of Information and Library Science, University of North Carolina–Chapel Hill, has had a wide variety of experience in medical librarianship, ranging from practice to research to administration to teaching. Marshall earned master’s degrees in health sciences from McMaster University and library sciences from

McGill University and received her doctorate in public health from the University of Toronto. In 2005, she received an honorary doctorate from McGill University in recognition of her contributions to health sciences librarianship research and practice.

In 1982, she was awarded the MLA Ida and George Eliot Prize for an article describing her evaluation of clinical medical librarianship. Since then she has been honored by MLA numerous times: doctoral fellowship (1987); Academy of Health Information Professionals Distinguished Member (1991–present); MLA Research, Development, and Demonstration Project Grant (1991); a second Eliot Prize (1993); MLA Fellowship (2002); and Donald A. B. Lindberg Research Fellowship (2010). Marshall has also been honored by the Special Libraries Association, Canadian Health Libraries Association/ Association des bibliothèques de la santé du Canada, and American Society for Information Science and Technology. Marshall has a long and impressive record of contributions to and leadership in MLA as a member of the Board of

Directors, as a continuing education instructor, and in committee and task force roles. She showed her passion and commitment for the profession by serving as MLA president in 2004/05.

Marshall is known for being at the forefront of research activities in the medical library field. She produced the highly cited report on the impact of the hospital library on clinical decision making known as the “Rochester Study.” This report led to two other studies that used similar methodologies to study the impact of special libraries on corporate decision making and the impact of government libraries in Canada. The “Rochester Study” is one of the profession’s major research reports and has led to a succession of studies in other areas of librarianship. Marshall’s original research became the foundation for a new nationwide study reported in the *Journal of the Medical Library Association (JMLA)*, in 2009, “Measuring the Value and Impact of Health Sciences Libraries: Planning an Update and Replication of the Rochester Study,” of which she is a coauthor. The January 2013 *JMLA* contains an article by Marshall and her colleagues on the “Value of Health Library and Information Services on Patient Care” study funded by the National Library of Medicine and the Donald A. B. Lindberg Research Fellowship. A number of MLA sections and chapters also supported the study.



Wednesday, May 8, 9:00 a.m.–10:00 a.m.

Joseph Leiter NLM/MLA Lecturer: Sheila Davis

Sheila Davis is currently the director of global nursing at Partners In Health (PIH), an international nongovernmental organization providing health care to three million of the poorest people in twelve countries, including the United States. Davis is also a clinical assistant professor in the School of Nursing at the MGH Institute of Health Professions in Boston, MA, where she teaches in the global health concentration and the HIV/AIDS specialty areas. She has worked in the field of HIV/AIDS since 1985 and has been an adult nurse practitioner at Massachusetts General Hospital in the infectious diseases outpatient clinic since 1997. Prior to completing her master’s degree as an adult nurse practitioner from the MGH Institute of Health Professions, she worked as a registered nurse in the area of HIV/AIDS after completing her bachelor’s of science in nursing

from Northeastern University in 1988. Davis graduated as part of the inaugural doctor of nursing practice class in September of 2008 from the MGH Institute of Health Professions with a concentration in global health and an emphasis on health as a human right and the contemporary role of nurses in human rights.

Davis was also one of the inaugural twenty nationwide Carl Wilkens Fellows in 2009, an anti-genocide fellowship from the Genocide Intervention Network. She has been an active member of the Association of Nurses in AIDS Care (ANAC) since 1990, was the founding president of the Greater Washington Chapter, and is a member at large of the Boston chapter. Davis also served on the National Board of ANAC as both secretary and director at large and received the ANAC Lifetime

Achievement Award in 2004. She was inducted into the Faculty of the American Academy of Nursing (FAAN) in 2008 and was named Distinguished Alumni of the MGH Institute of Health Professions in 2007. She cofounded a small nongovernmental organization with other nursing colleagues that worked in South Africa and Boston from 2004–2010 on health projects including a rural village nurse clinic, vulnerable children feeding program, and an outreach program to Boston's sub-Saharan African immigrant community. Davis is on the editorial board of *Health and Human Rights: An International Journal* and the *Journal of Nursing Education*. In May of 2012, she was selected to be a Robert Wood Johnson Foundation Executive Nurse Fellow, a three-year advanced leadership program for nurses who aspire to lead and shape health care locally and nationally.



Plenary Session IV

Wednesday, May 8, 10:30 a.m.–noon

Plenary Speaker: Laurie Garrett

Joint Presentation by Chapters and Sections with the 2013 National Program Committee

Laurie Garrett is particularly adept at navigating the politics that help, and hinder, how we prepare for, treat, and respond to threats. A senior fellow for global health at the Council on Foreign Relations, Garrett is the bestselling author of *The Coming Plague: Newly Emerging Diseases in a World Out of Balance* and *Betrayal of Trust: The Collapse of Global Public Health*. She has written for *Foreign Affairs*, *Esquire*, and the *Washington Post*, and has appeared frequently on television shows, such as *Nightline*, *Charlie Rose*, and *The Oprah Winfrey Show*. Garrett also served as a script consultant to *Contagion*, the film directed by Steven Soderbergh and starring Matt Damon.

Garrett is a former president and now a member of the National Association of Science Writers and has been awarded three honorary doctorates, the latest, in 2009, from Georgetown University. She is also serving as a cochair on the Joint United Nations Programme on HIV/AIDS (UNAIDS) High Level Commission on HIV Prevention.



To get discounted registration, renew or join MLA today.

www.mlanet.org/joinmla/



Networking Events

Saturday, May 4

9:00 a.m. – 5:00 p.m.

Local Tours and Library Visits

5:30 p.m. – 7:30 p.m.

Welcome Reception and Opening of the Hall of Exhibits

Ticketed event. One ticket to the reception is included with packages A and B. Purchase additional tickets on the registration form.

Sunday, May 5

7:00 a.m.

Sunrise Yoga

Sponsored by Complementary and Alternative Medicine SIG and cosponsored by the Hospital Libraries Section.

Want to rejuvenate your mind and body? Attend Sunrise Yoga, which is open to all and will be oriented toward all levels. The class will be led by Boston area instructor Evelyn Wong, who brings certification and years of experience teaching yoga, including but not limited to Kripalu yoga. Wear loose, comfortable clothing and bring a yoga mat, if you have one. Some spare yoga mats and towels will be available. No registration required.

7:00 a.m. – 9:00 a.m.

New Members/First-Time Attendees Program

Sponsored by Wolters Kluwer Health | Ovid.

Invited Event.

Are you a new MLA member or a member who is attending your first annual meeting? Join the MLA Membership Committee for its annual program. The program begins promptly at 7:30 a.m. New MLA members and members attending their first MLA meeting should identify themselves when registering for the meeting. Invitations will be emailed about 4 weeks before the meeting. You must RSVP to gain admittance.

noon – 1:30 p.m.

Chapter Council Presents Chapter Sharing Roundtables

Sponsored by UpToDate.

Optional ticketed event. You must register in advance. There will be no on-site registration. A lunch ticket is required to participate in a discussion and costs \$42. Register by topic number. Registrations without a topic number will not be processed.

Attend the Chapter Council Presents Chapter Sharing Roundtables for lunch and informal discussions on a variety of topics. Lunch will be a plated meal including salad, entrée, and dessert. Please indicate dietary restrictions on your registration form.

Facilitators and recorders will be at each table to initiate discussion and to document the discussion for posting on the Chapter Council website (www.chaptercouncil.mlanet.org). Facilitators and recorders earn one point toward membership in the Academy of Health Information Professionals for completing these activities. If you would like to share your skills and expertise as a facilitator or a recorder, please email Rebecca McKay, rlmckay@library.tamu.edu.

Attention new MLA members: MLA offers one free lunch ticket per topic to new members (MLA member for five years or less) who register via the online registration system. Free tickets are paid through chapter donations and MLA and are available on a first-come, first-served basis. To select a free ticket, choose Chapter Council Presents Sharing Roundtable “free lunch” in the optional ticket section of the online registration form. Select your desired topic from the drop-down box. If your topic is grayed out, this topic has already been taken; however, tickets are still available for purchase.

The free roundtable ticket will be added to your registration and shown on your confirmation letter with a price of zero. When you arrive at the meeting, you will receive a lunch ticket with your selected topic printed on it. At the lunch, you must sit at the table for your designated topic. Each table facilitator will have a roster to check attendance. If your plans change and you cannot attend the lunch, please cancel so that the free ticket will be available for another attendee. See registration instructions for cancellation instructions.

Topics for 2013 Roundtables

Topic descriptions are available online at www.chaptercouncil.mlanet.org/roundtables/.

- | | |
|--|--|
| 1. Budget Cuts Problem Solving* | 14. Literature Searches to Support Systematic Reviews |
| 2. Copyright Issues | 15. Measuring Success and Influencing Decision Makers |
| 3. E-Books | 16. Mobile Technologies for Medical Librarians |
| 4. Electronic Medical Records: The Role of the Library | 17. Negotiating with Vendors |
| 5. Embedded Librarians | 18. New and Emerging Roles for Medical Librarians |
| 6. Health Literacy | 19. Outreach Services* |
| 7. Instruction Techniques | 20. Scholarly Communication |
| 8. Integrating You or the Library into the Curriculum | 21. Solo Librarians |
| 9. iPads in the Curriculum, Clinics, and Library* | 22. Supporting Translational Research |
| 10. Issues in Hospital Librarianship | 23. Teaching Evidence-Based Medicine to Students and Faculty |
| 11. Liaisons Stepping Out of the Library | 24. Virtual Reference |
| 12. Library Redesign* | |
| 13. Library Support for One Health Initiatives* | |

* New topics for 2013

6:00 p.m. – 7:00 p.m.

Library School Reunion

Open to library school alumni. No registration required.

Networking Events

6:00 p.m. – 7:30 p.m.

International Visitors Reception

For International Cooperation Section members and international attendees. No registration required.

Monday, May 6

noon – 1:30 p.m.

Awards Ceremony and Luncheon

Sponsored by UpToDate.

Ticketed event. One ticket to the luncheon is included with package A. Purchase additional tickets on the registration form.

1:30 p.m. – 2:30 p.m.

Academy of Health Information Professionals Q & A Session

2:00 p.m. – 3:00 p.m.

Open Forums (To Date)

Improving Health Information Access in Underserved Communities and Developing Countries: Learning from Each Other

Building on the well-received 2012 International Cooperation Section open forum, "International and National Outreach Programs: Learning from Each Other," this forum invites people conducting projects that improve health information access throughout the world, especially in underserved communities and developing countries, to share their experiences with and insights into conducting such projects. Projects can be geared toward health professionals, health practitioners and researchers, or users.

The forum will start with a panel of international librarians who will share their project experiences, highlights of the important elements for success, and potential problem areas. An open discussion with the panelists and forum participants will follow the brief presentations. The goal is to build and expand the network of support available for these types of projects for future collaborations, consultation, and assistance. All meeting attendees with experience or interest in this topic are encouraged to attend.

Membership Dynamics

The Membership Committee is asking MLA to both think about and act on questions about who we see as our members. This forum is part of our efforts to engage in this discussion and to grow our membership base. We will share data about our current membership dynamics and trends, discuss rationales for growing our base, implications for current members, and ideas that will help us move forward.

MLA Academy of Teaching Excellence (MATE) Project

The Task Force on MATE is seeking input about ways MLA can support the development and growth of instructors and capture best practices of experienced instructors.

4:30 p.m. – 6:00 p.m.

Hospital Libraries Section Business Meeting and Ice Cream Social

Registration is required. Select this on the registration form.

Tuesday, May 7

1:30 p.m. – 3:00 p.m.

Legislative Update and Scholarly Communications Update

Join MLA's Scholarly Communications Committee and Governmental Relations Committee for these programs that will address timely and relevant issues.

- 1:30 p.m.–2:30 p.m.: Alt-Metrics in Scholarly Communication: Article Level Analysis to Measure Value. MLA's Scholarly Communications Committee will sponsor a panel discussion on new methods to assess the value of scholarly content.
- 2:30 p.m.–3:00 p.m.: Legislative Update. MLA's Governmental Relations Committee will provide an overview of health funding and other relevant and timely issues and legislation.

6:00 p.m. – 7:30 p.m.

Tech Trends

Program session sponsored by the Medical Informatics Section, Educational Media and Technologies Section, and Hospital Libraries Section. All are invited. No registration required.

7:30 p.m. – 10:00 p.m.

Taste of Boston Party

Sponsored by UpToDate.

Ticketed event. One ticket to the reception is included with package A. Purchase additional tickets on the registration form.

All are welcome for a "Taste of Boston," where your taste buds can sample their way through an incredible selection of tasty favorites from Boston. In addition to the savory food and beverages, you will be able to enjoy the DJ, dancing, and special entertainment.

Wednesday, May 8

1:00 p.m. – 5:00 p.m.

Local Tours and Library Visits

Services

MLA Academy Booth

Do you want to know more about the Academy of Health Information Professionals (AHIP)? Are you unclear about what you need for your portfolio? Do you need some one-on-one guidance?

Stop by the academy booth in the Hall of Exhibits! We will have academy experts at the booth to answer your questions, review your portfolio, and update you on all of the new changes with the academy.

Colleague Connection

Is this your first MLA meeting? Not sure what to attend? Need someone to show you the ropes? Or do you want to help a member maneuver MLA's annual meeting? Sign up for the Colleague Connection. This popular networking program pairs a first-time attendee with an experienced member. Once assigned, the pairs work out their own meeting schedules.

To participate, please contact Ryan Harris, AHIP, at rharris@hshsl.umaryland.edu by April 1, 2013. Indicate whether you want to be paired with an experienced member or want to help a new colleague.

International Visitors Desk

Members of the International Cooperation Section (ICS) will welcome international visitors and provide an orientation to One Health. When you arrive at One Health, stop at the desk to learn what to see, where to go, whom to meet, and how to connect with MLA members at the meeting and electronically. The desk will be located adjacent to the One Health Hospitality Booth at the entrance to the Hall of Exhibits. Hours of operation will be posted at the desk.

Job Placement Center

Saturday, May 4	9:00 a.m.–3:00 p.m.
Sunday, May 5	10:00 a.m.–5:00 p.m.
Monday, May 6	9:00 a.m.–11:30 a.m. 1:30 p.m.–5:00 p.m.
Tuesday, May 7	9:00 a.m.–noon 1:30 p.m.–5:00 p.m.

Whether you are seeking an entry-level position, an opportunity for advancement, or a change of scenery or you are an employer seeking a highly qualified employee, take advantage of the Job Placement Center.

Individual job seekers and employers must register with the Job Placement Center by completing the forms available at www.mlanet.org/am/am2013/, calling +1.312.419.9094 x11, or emailing gunn@mlahq.org (please use "Job Placement Center" in subject line).

All forms will be accepted whether or not you are able to attend One Health. Employers are assessed fees for participating; there is no fee for job seekers.

The deadline for all forms is Monday, April 15, 2013. After April 15, 2013, please bring all forms to the placement center.

In addition to the onsite Job Placement Center, employers can post job opportunities on the One Health website for \$100 for 2 months. Details are available on the One Health site.

To place a job ad on MLANET, visit www.mlanet.org/jobs/jobs2.html.

MLA Resume Clinic

The Professional Recruitment and Retention Committee (PRRC), in conjunction with the MLA Job Placement Center, will sponsor the MLA Resume Clinic.

If you have a cover letter, resume, or CV that you would like to have reviewed, please sign up. Each participating member will have fifteen to twenty minutes with a reviewer. During that time, the reviewer will critique your cover letter, resume, and/or CV and offer tips and advice for improvement.

The resume clinic is available during the MLA Job Placement Center hours on Sunday, May 5, Monday, May 6, and Tuesday, May 7.

If you would like to send your information in advance of your arrival, please send it to Karen L. Liljequist, AHIP, kli@the-institute.org, or you can bring it with you.

Drop-ins are welcome; however, signing up is strongly advised. Sign up online at <https://s.zoomerang.com/s/mla13rcr>. You must attend One Health to use this service. If you cannot attend the meeting and wish to have your resume reviewed, you can find a mentor at www.mlanet.org/mentor/.

Official Annual Meeting Blog

The National Program Committee and volunteer bloggers will provide personal coverage on program sessions, plenary sessions, exhibitors, social events, and more. Check it out before, during, and after the meeting at www.npc.mlanet.org/mla13/.

One Health Meetings and Exhibit Hall Location

John B. Hynes Veterans Memorial Convention Center, 900 Boylston Street, Boston, MA, 02115, USA

Exhibit hours:

- Saturday, May 4** 5:30 p.m.–7:30 p.m. Ticketed event: Welcome Reception/Opening of Exhibits
- Sunday, May 5** noon–5:00 p.m.
- Monday, May 6** 10:00 a.m.–noon
1:15 p.m.–5:00 p.m.
- Tuesday, May 7** 10:00 a.m.–3:00 p.m.

Exhibitors (as of November 12, 2012)

To exhibit at One Health, contact Greg Andruch, Hall-Erickson, at +1.630.434.7779; email, mla@heexpo.com.

- Alexander Street Press
- American Academy of Pediatrics
- American Association for the Advancement of Science
- American Physiological Society
- American Psychological Association
- American Society for Biochemistry and Molecular Biology (ASBMB)
- Annual Reviews
- Basch Subscriptions, a Prenax Company/The Reference Shelf
- BIOBASE Corporation
- CABI
- CyberTools for Libraries
- Decker Publishing
- EBSCO Information Services
- Eduserv
- Elsevier
- Elsevier (Clinical Key)
- Endocrine Society
- EOS International
- EPrints Services
- Exam Master
- Faculty of 1000
- HARRASSOWITZ
- IEEE Xplore Digital Library
- JAMA Network
- John Wiley & Sons
- *Journal of Bone and Joint Surgery*
- *Journal of Studies on Alcohol and Drugs*
- *Journal of Visualized Experiments*
- Karger Publishers
- Leadership Directories
- Logical Images
- Mary Ann Liebert Publishers
- Matthews Medical & Scientific Books
- McGraw-Hill
- The Medical Letter on Drugs & Therapeutics
- Meteo
- National Library of Medicine
- Natural Standard
- *New England Journal of Medicine*
- OpenHelix
- Oxford University Press
- PEPID
- *Proceedings of the National Academy of Sciences USA*
- ProQuest (RefWorks, Serials Solutions, Dialog)
- Public Library of Science
- Radiological Society of North America (RSNA)
- Rittenhouse Book Distributors
- SAGE Publications
- Softlink America
- Springer
- STAT!Ref
- Swets
- Thieme Medical Publishers
- TDNet
- Thomson Reuters
- Wiley
- Wolper Subscription Services
- Wolters Kluwer Health
- Wolters Kluwer Health | Ovid
- WT Cox Subscriptions
- YBP Library Services

Hall of Exhibits

Internet Café

Sponsored by Elsevier.

Saturday, May 4–Wednesday, May 8

The Internet Café provides convenient Internet wireless access for meeting attendees. To access your offsite email, bring the name and, if possible, the Internet service provider (ISP) number of your host (mail server). The café does not have printers.

Poster Sessions

1. **Sunday, May 5** 1:30 p.m.–2:30 p.m.
2. **Monday, May 6** 1:30 p.m.–2:30 p.m.
3. **Tuesday, May 7** noon–1:00 p.m.
4. **Tuesday, May 7** 1:30 p.m.–2:30 p.m.

Peer-reviewed posters are a great opportunity to learn from your peers' experiences implementing new programs and establishing new techniques for today's library. View posters on MLANET about three weeks before the meeting.

Technology Showcase

Hall of Exhibits hours

A theater-style setting is open for exhibitor presentations of the latest technologies. Running throughout the day, these sessions are an opportunity for attendees to get a first look at new technology.

Informal Meetings Notice

- Sunday, May 5** 7:00 a.m.–9:00 a.m.
2:00 p.m.–3:00 p.m.
- Monday, May 6** 7:00 a.m.–9:00 a.m.
4:30 p.m.–6:00 p.m.
- Tuesday, May 7** 7:00 a.m.–9:00 a.m.
2:00 p.m.–3:00 p.m.
4:30 p.m.–6:00 p.m.
- Wednesday, May 8** 7:00 a.m.–9:00 a.m.

Note: If you are an affiliate, non-MLA group, exhibitor, or commercial group, you will be charged for reserving informal meeting space. To get more information and reserve informal meeting space, you must complete an application, available at mla13.heiexhibitors.com/content/mla-13-meeting-space-application.

MLA reserves blocks of time for informal meetings and other events. Requests outside these times cannot be accommodated.

By contract, all meeting space is controlled by MLA. Calls to the convention center or hotel for space will be forwarded to the meeting manager for approval.

Continuing Education Courses



Registration and Fees

Registration is handled on a first-come, first-served basis, and no waiting lists are maintained. You must register for continuing education (CE) courses by course number and day on the registration form. Fees are based on first-choice selections. You do not have to register for the meeting to register for One Health courses. Room assignments will be listed in the *Official Program*. Some instructors have established a maximum attendance size, so register early by sending in the registration form on page 23 today—or better yet, register online now.

Student fee, pending available space: \$50. Nonmember rate includes one-year introductory membership to MLA. Cancellation or course change fee: \$50 per course (see page 21 for refund policy and deadlines).

Course Materials

Participant handouts for CE courses will be made available electronically. Attendees will be required to print their own handouts and bring them along to the course. MLA will send out a confirmation prior to the CE course stating if participants are required to print and bring their own handouts.

Professional Competencies

Courses are organized in tracks according to the professional competency areas described in *Competencies for Lifelong Learning and Professional Success*, MLA's educational policy statement (www.mlanet.org/education/policy/).

- 100s** Health sciences and health care environment and information policies
- 200s** Leadership and management theory and techniques
- 300s** Health sciences information services
- 400s** Health sciences information resource management
- 500s** Information systems and technology
- 600s** Curricular design and instruction
- 700s** Research, analysis, and interpretation

12 ONE HEALTH PRELIMINARY PROGRAM

Special Course Suites

- CHIS Consumer Health Information Specialist**
These courses present the latest resources and ideas in the consumer health information field.
- DIS Disaster Information Specialist**
These courses provide the latest information and resources in the field of disaster information.
- EBP Evidenced-based Practice**
These courses emphasize the librarian's role in the practice of evidence-based health care.
- EST Expert Searcher Training Initiative**
These courses emphasize librarians' roles as expert searchers in health care and biomedical research.
- ISIC Information Specialist in Context**
These courses provide training and demonstrate knowledge regarding the role of the information specialist in context.
- MT Management Track**
These courses address topics relevant to library administration for current managers and individuals interested in management.
- Hand icon Hands-on Computer Courses**
All hands-on computer courses will be held at an offsite facility in Boston, MA, and not at the John B. Hynes Veterans Memorial Convention Center or at the Sheraton Boston. The facility will be named in the *Official Program*. Transportation from the hotel to the facility will be provided, if necessary. Hands-on courses are marked as part of the course description with the hand icon.
- e eLearning Opportunities: Web-based Courses**
MLA-hosted courses for those who cannot attend One Health. For information on the eLearning courses offered during One Health, see page 17.

Friday, May 3

8:00 a.m. – 5:00 p.m.

EST CE300 Searching for Drug and Pharmaceutical Information Online

Level: Intermediate

Cost: \$305 (nonmember, \$545)

This course provides an overview of major online sources for pharmacology and therapeutics information. Topics covered include: factors in the drug development and regulatory review process that affect information retrieval, types of drug nomenclature and their relationship to scientific communication and effective literature searching, and key points to consider in resource selection.

Instructor: Bonnie Snow, Independent Information Consultant, Philadelphia, PA


Hand icon CE600 Creating Strong Online Tutorials: Technologies and Principles That Engage Your Patrons

Level: Intermediate**Cost:** \$405 (nonmember, \$695)**Attendance maximum:** 20

This hands-on workshop will help you make evidenced-based choices and discover webinars that go beyond chats, PowerPoint presentations that take advantage of narration and instructive graphics, podcasts that are entertaining and lively, and wikis that help students create multimedia projects, pictures, and graphs that are replacing long text passages.

Instructor: Jan Buhmann, Manager, Learning Technologies, PeaceHealth, Eugene, OR

10:00 a.m.–5:00 p.m.

 **CE301** Global Health: Information Resources in a Multidisciplinary, Dispersed Literature: Tools, Techniques, and Collection Development

Level: Beginning+**Cost:** \$365 (nonmember, \$635)**Attendance maximum:** 20

Addressing surging interest in global health, this workshop will empower librarians to be effective collaborators in multidisciplinary programs and international settings. Participants will learn hands-on searching skills and collection development, including statistical and geographic sources. Concepts investigated, including the social determinants of health, will give insights key to working in global health.

Instructors: Jim Henderson, Librarian (retired), Life Sciences Library, and Eamon Duffy, Liaison Librarian, History, Classical Studies and Government Information, McLennan Library, McGill University, Montreal, QC, Canada

CE302 Understanding Basic Biomedical Researchers and Their Information Needs

Level: Beginning+**Cost:** \$290 (nonmember, \$520)

If you have been assigned to work with doctoral-level biomedical researchers, doctoral students, and other basic scientists, you may have discovered that they are very different from clinical professionals and students. This course will introduce librarians to the culture and training of basic biomedical researchers, as well as the nature of research, the scientific method, types of research areas, and trends. Understanding these basics will help participants feel more comfortable interacting with this library user group and tailor their services to meet the information needs of this community at their home institutions more productively.

Instructors: Susan Kendall, Health Sciences Coordinator and Biology Librarian, Libraries, Michigan State University—East Lansing, and Kevin R. Messner, Science Librarian, Brill Science Library, Miami University, Oxford, OH


CE601 Beyond PowerPoint: Leveraging Technology to Enhance Instruction and Learning

Level: Beginning**Cost:** \$290 (nonmember, \$520)**Attendance maximum:** 25

This course will inform the information professional of different ways of delivering informational services instruction to clients. By optimizing the standard instructional platform today (Microsoft PowerPoint) and introducing other innovative web-based models of instruction—such as Prezi, Jing, LibGuides, and Keynote for iPads—information professionals must reevaluate and assess their current pedagogical philosophies to stay relevant and meet clients' needs in ways that are familiar and most accessible to them.

Instructors: Antonio DeRosa, Assistant Reference Librarian, and Marisol Hernandez, Senior Reference Librarian, Nathan Cummings Library, Memorial Sloan-Kettering Cancer Center, New York, NY

8:00 a.m.–noon

 **CE101** Health and Disaster: Understanding the International Context

Level: Intermediate**Cost:** \$315 (nonmember, \$560)**Attendance maximum:** 20

Every disaster is a national disaster. Yet the health impact of disasters that occur outside the United States are similar to domestic disasters and can have important repercussions for US communities and agencies, either because they now perceive a shared vulnerability and risk or because a large diaspora exists in the United States that will demand information. This four-hour course for information specialists, librarians, and other related professionals looks at who's who (and why) in the international disaster community, their roles and responsibilities in pre- and post-disaster situations, and the type of information that they may offer or require to respond to real or perceived needs, with a particular focus on health.

Instructors: John C. Scott, President, and Patricia Bittner, Coordinator, Disaster Risk Management, Center for Public Service Communications, Arlington, VA

 **CE200** Maintain Momentum in Marketing

Level: Beginning+**Cost:** \$240 (nonmember, \$445)**Attendance maximum:** 30

It is essential for libraries to build and promote their brand even if they do not have a dedicated staff or a huge budget. This course, taught by librarians with real-world marketing experience, will focus on planning strategic marketing campaigns for health sciences libraries. We will help people with limited time and skills see how they can create and implement a campaign, establish goals and objectives, identify key messages and audiences, and use appropriate strategies and tools. We will talk about the value of the library brand and how to promote it visually to clientele and include social media tools and marketing techniques for engaging users. We will discuss how to budget time for marketing and ways to share the workload among key library staff. We will outline ways to evaluate a campaign's effectiveness and how to build on its success. We will identify key books, blogs, people, and websites to follow and emulate.

Instructors: Patricia C. Higginbottom, AHIP, Associate Professor and Associate Director, Public Services, and Valerie S. Gordon, AHIP, Associate Professor and Head, Cataloging and Staff Development, Lister Hill Library of the Health Sciences, University of Alabama—Birmingham

CE Courses

CE500 Data Curation for Information Professionals

Level: Beginning

Cost: \$240 (nonmember, \$445)

Attendance maximum: 30

This course will provide a working knowledge of data curation principles and a greater understanding of the role libraries are poised to play in data management planning. Attendees will address a data management case study in break-out groups, report back, and discuss challenges, opportunities, and approaches.

Instructors: Patricia Hswe, Digital Content Strategist and Head, ScholarSphere User Services, University Libraries, Pennsylvania State University–University Park; Yasmeen Shorish, Science Librarian, James Madison University, Harrisonburg, VA; and Andrea Horne Denton, Research and Data Services Manager, Claude Moore Health Sciences Library, University of Virginia–Charlottesville

CE501 Network Visualization Tools

Level: Beginning

Cost: \$240 (nonmember, \$445)

Attendance maximum: 35

Network visualization tools are popular for investigating existing and novel relationships between concepts such as interactions between molecules. This course will provide an introduction to these tools, including terminology and criteria for selecting or using them. We will explore two freely and internationally available open source network visualization tools, Cytoscape and VisANT.

Instructors: Marci Brandenburg, Bioinformationist, and Jean Song, Research and Informatics Coordinator, Taubman Health Sciences Library, University of Michigan–Ann Arbor

1:00 p.m.–5:00 p.m.

CE303 Veterinary and Comparative Medicine: Literature, Resources, and Services

Level: Beginning

Cost: \$240 (nonmember, \$445)

Attendance maximum: 30

Come explore the wilder side of medicine as we vet the literature of veterinary medicine compared with that of other medical sciences. This course will provide an introduction to and history of veterinary medicine, practical information about veterinary resources and services, tips for searching the literature, and trends in veterinary medicine and veterinary librarianship, using parallels and comparisons to human medicine.

Instructors: Esther Carrigan, AHIP, Professor, Associate Dean, and Director, Medical Sciences Library; and Ana G. Ugaz, AHIP, Associate Professor and Coordinator, Collection Development and Strategic Initiatives, Medical Sciences Library; Texas A&M University–College Station; and Heather K. Moberly, AHIP, Professor and Veterinary Medicine Librarian, William E. Brock Memorial Library, Oklahoma State University–Stillwater

CE502 Free and Easy: The Most Effective Search Tools for the Biomedical Librarian

Level: Intermediate

Cost: \$315 (nonmember, \$560)

Attendance maximum: 20

Free Internet resources of interest to the biomedical librarian, powerful special search engines, and effective tools will be presented. The presenter will monitor the Internet for new developments until immediately before the course will be given. Participants will be provided with a CD-ROM of the course contents to take home.

Instructor: Friedhelm Rump, Library Director, Hannover Library, Veterinary University, Hannover, Germany

EST CE700 Supporting Systematic Reviews: The Basics

Level: Intermediate

Cost: \$240 (nonmember, \$445)

Attendance maximum: 16

Have you been asked to participate in the development of a systematic review? This is not for the faint of heart; it's an elaborate process. Through informal discussion and case-based learning, you will acquire the skills needed to support systematic reviews in your institution.

Instructors: Janis Glover, Education Services Librarian, Cushing/Whitney Medical Library, Yale University, New Haven, CT, and Karen Odat, Research and Education Librarian, Biomedical Libraries, Dartmouth College, Hanover, NH

Saturday, May 4

8:00 a.m.–3:00 p.m.

CHS CE304 Health and Wellness @ the Library: The Essentials of Providing Consumer Health Services

Level: Beginning+

Cost: \$365 (nonmember, \$635)

Attendance maximum: 20

This course builds a foundation of core competencies and skills for providing consumer health services in any setting. The blended online and in-person format provides comprehensive coverage of topics and thought-provoking discussion and sharing among classmates. Through carefully designed assignments, participants will finish the class with tangible knowledge and relevant projects that can be immediately applied in their workplaces.

Instructor: Kelli Ham, Consumer Health and Technology Coordinator, National Network of Libraries of Medicine (NN/LM), Pacific Southwest Region, UCLA Biomedical Library, Center for the Health Sciences, University of California–Los Angeles

Note: Web-based portion of the course will take place pre- and post-meeting. Participants will receive 12 MLA CE contact hours if they participate. The course meets requirements for the MLA Consumer Health Information Specialization, Level I.

EBP CE305 Evidence-Based Librarianship in Practice: Using Evidence in Health Sciences Libraries

Level: Beginning

Cost: \$290 (nonmember, \$520)

Attendance maximum: 20

This course introduces the tenets of evidence-based library and information practice to all library practitioners, demonstrating tools and strategies for applying evidence in practice. The course will look beyond the formal evidence-based practice (EBP) model and

CE Courses

place evidence in the context of real-world decision making.

Instructors: Lorie Kloda, AHIP, Associate Editor, *Evidence Based Library and Information Practice*, and Assessment Librarian, Libraries, McGill University, Montreal, QC, Canada, and Denise Koufogiannakis, Associate Editor, *Evidence Based Library and Information Practice*, and Collections and Acquisitions Coordinator, Libraries, University of Alberta—Edmonton, Canada

CE308 Cancer Concepts and Search Techniques

Level: Beginning+

Cost: \$290 (nonmember, \$520)

Attendance maximum: 30

This course will provide a foundation for understanding basic cancer concepts and using a variety of resources and search techniques to locate answers. It is taught by a librarian who has worked extensively with oncologists for more than fifteen years.

Instructor: Jeannine Cyr Gluck, AHIP, Director, Library, Eastern Connecticut Health Network—Manchester

CE400 Bioinformatics for Librarians

Level: Beginning+

Cost: \$365 (nonmember, \$635)

Attendance maximum: 20

Get bioinformatics in your DNA! Begin with a general introduction to molecular biology, then explore key bioinformatics resources, focusing on sources of curated data from the National Center for Biotechnology Information (NCBI) and ExPASy portals. Step-by-step instructions to complete specific database searches will be provided. Finally, reflect on your library's involvement in the provision of bioinformatics services.

Instructor: Natalie Clairoux, Biomedical Librarian, Bibliothèque de la santé, Université de Montréal, Montréal, QC, Canada

CE701 Supporting Systematic Reviews: Beyond the Basics

Level: Beginning+

Cost: \$365 (nonmember, \$635)

Prerequisite: Must have completed CE700, "Supporting Systematic Reviews: The Basics," or similar training.

Attendance maximum: 16

This workshop is an in-depth, hands-on simulation of the librarian's role in the systematic review process.

Instructors: Janis Glover, Education Services Librarian, Cushing/Whitney Medical Library, Yale University, New Haven, CT, and Karen Odató, Research and Education Librarian, Biomedical Libraries, Dartmouth College, Hanover, NH

8:00 a.m. – noon

CE100 Making a Difference in Health Care: Patient Safety, a Global Issue with National and International Solutions

Level: Beginning

Cost: \$240 (nonmember, \$445)

This interactive course assists librarians in becoming effective patient and health care advocates, actively involved in patient safety programs in their institutions and beyond. Discover the international breadth of this subject; understand issues

related to medical error; and identify focused resources for health professionals, researchers, staff, and patients and families.

Instructors: Holly Ann Burt, AHIP, Outreach and Exhibits Coordinator, National Network of Libraries of Medicine (NN/LM), Greater Midwest Region, Library of the Health Sciences, University of Illinois—Chicago, and Affra S. Al Shamsi, Medical Library Manager and Electronic Resources Consultant, Medical Library, Ministry of Health-Royal Hospital, Muscat, Sultanate of Oman

CE201 Business Communications: Library Style

Level: Intermediate

Cost: \$240 (nonmember, \$445)

Attendance maximum: 25

How we express ourselves can be directly related to the funding we receive and how well our libraries are perceived. Writing clear, concise communiques—including white papers, business plans, grant proposals, budget justifications, and annual reports—is essential in today's fast-changing, bottom-line-driven environment.

Instructors: Marty Magee, Education Liaison and Nebraska Coordinator, National Network of Libraries of Medicine (NN/LM), MidContinental Region, McGoogan Library of Medicine, University of Nebraska Medical Center—Omaha, and Barbara Bower Jones, Library Advocacy Liaison and Missouri Coordinator, NN/LM, MidContinental Region, J. Otto Lottes Health Sciences Library, University of Missouri—Columbia

CE306 Personal Genomics, Personalized Medicine, and You

Level: Beginning+

Cost: \$315 (nonmember, \$560)

Attendance maximum: 15

Advances in DNA sequencing technologies have greatly reduced the cost of whole genome sequencing and created fascinating new areas of study: personal genomics and personalized medicine. This course will expose medical librarians to information they can bring to their patrons, including breaking news, available online resources, health-focused genetic testing and analysis services, and more.

Instructor: Carrie L. Iwema, Information Specialist, Molecular Biology, Health Sciences Library System, University of Pittsburgh, Pittsburgh, PA

CE503 Emerging Technologies for Librarians

Level: Beginning+

Cost: \$240 (nonmember, \$445)

Attendance maximum: 30

This four-hour class is designed to increase your knowledge of new and emerging technologies impacting our profession by discussing mobile devices and social media services. Some of the topics include smartphones, tablets, e-book readers, gesture or voice-based computing, mobile apps and web pages, and collaboration tools. Popular social media services applicable to libraries will also be discussed.

Instructors: Gabriel Rios, Deputy Director, Lister Hill Library of the Health Sciences, University of Alabama—Birmingham, and Melissa De Santis, AHIP, Deputy Director, Health Sciences Library, University of Colorado Anschutz Medical Campus—Aurora

REGISTER ONLINE AT WWW.MLANET.ORG

CE Courses

1:00 p.m. – 5:00 p.m.

CHS CE202 Community Engagement 101: The Art of Building Community Partnerships

Level: Beginning

Cost: \$240 (nonmember, \$445)

Attendance maximum: 25

What is community engagement? Involving community-based partners is an essential foundation for effective health information outreach and related library programs. This course focuses on community engagement strategies and offers skills useful for cultivating collaborative relationships with a wide range of community partners. Key principles of community engagement and the partnership process will be discussed.

Instructor: Deborah Charbonneau, Assistant Professor, School of Library and Information Science, Wayne State University, Detroit, MI

CE307 The Animal-Human Health Knowledge Connection

Level: Beginning

Cost: \$240 (nonmember, \$445)

Become aware of the connections between human and animal health. Explore sources and vocabularies of food and companion animal health information online and in print. Familiarize yourself with practitioners involved in the One Health initiative and learn how to provide knowledge to impact the health of people living or working with animals.

Instructors: Kristine Alpi, AHIP, Director, William Rand Kenan, Jr. Library of Veterinary Medicine, and Adjunct Assistant Professor, and Carol E. Vreeland, AHIP, Associate Director, William Rand Kenan, Jr. Library of Veterinary Medicine, and Adjunct Assistant Professor, Population Health and Pathobiology, College of Veterinary Medicine, North Carolina State University–Raleigh

EBP ISIC CE704 Finding the Evidence: Evidence-Based Practice in Nursing

Level: Beginning

Cost: \$240 (nonmember, \$445)

The class will include a basic overview and history of evidence-based practice (EBP) in nursing and hierarchies of quantitative and qualitative evidence, as well as formulating the question, finding the right resources, evaluating the information, and developing a systematic review. It will include a global perspective on nursing EBP.

Instructors: Dolores Zegar Judkins, AHIP, Head, Instruction, Research and Outreach, Library, Oregon Health & Science University–Portland, and Patrice O'Donovan, AHIP, Library Director, Portland Campus Library, Linfield College, Portland, OR

Wednesday, May 8

1:00 p.m. – 5:00 p.m.

EBP ISIC CE702 Evidence-Based Practice: Introduction to Study Design and Critical Appraisal

Level: Beginning

Cost: \$240 (nonmember, \$445)

Attendance maximum: 30

Librarians are in a better position to help support evidence-based practice (EBP) in their institutions if they understand the basics of EBP. This course is an introduction to the study designs used in clinical research and to the validity criteria used to evaluate randomized control trials and systematic reviews.

Instructor: Connie Schardt, AHIP, FMLA, Associate Director, Public Services, Medical Center Library, Duke University, Durham, NC

CE703 Introduction to Bibliometrics

Level: Beginning+

Cost: \$315 (nonmember, \$560)

Attendance maximum: 20

The course will introduce participants to the bibliometric research method, identify uses of the method for collection management, and allow class members to participate in practical exercises involving bibliometric research. Instruction will involve lecture, demonstration, and practical application of the principles included in the objectives.

Instructor: Judy Burnham, AHIP, Director, Biomedical Library, University of South Alabama–Mobile

1:00 p.m. – 6:00 p.m.

CE309 Librarians Without Borders®: Internet-Based Information Resources for Health Professionals in Low and Emerging Income Countries

Level: Beginning

Cost: Free to MLA members (nonmember, \$50*)

Attendance maximum: 25

The course will cover searching strategies, evaluation of Internet-based health information, key features of HINARI, and PubMed options for accessing HINARI resources and free literature, plus an extensive overview of health information on the Internet including gray literature, e-journal, e-books, and evidence-based medicine resources. Also included will be an overview of useful Internet-accessible training material.

Instructors: Lenny Rhine, FMLA, Coordinator, E-Library Training Initiative, Librarians without Borders®, MLA, and Michael Chimalizeni, Assistant Programme Director, Information Training and Outreach Centre for Africa

Note: Attendees will be required to bring a laptop computer or other device with WiFi capability to participate in hands-on activities.

* Nonmember fee for CE309 does not include one-year introductory membership to MLA.

One Health Sponsors

It's been said, "Freedom is never free." In 1958, the Freedom Trail was created to link historic sites in Boston. Today the Freedom Trail is a major attraction for thousands who freely follow the trail's red line connecting sixteen historic sites. Meeting sponsor levels pay homage to the Freedom Trail by recognizing three of its sites.



Bunker Hill Monument

At the north end of the Freedom Trail, the monument stands 221 feet tall at Breed's Hill.

American Medical Association
EBSCO
Elsevier
Wolters Kluwer Health | UpToDate



Paul Revere House

This house was built around 1680 and served as the home of silversmith Paul Revere from 1770 to 1800. Paul Revere is famous for his "midnight ride" to Lexington.

McGraw-Hill Professional
Thomson Reuters
Wolters Kluwer Health | Ovid



Boston Common

The starting point of the Freedom Trail, Boston Common became our country's first public park in 1634.

The New England Journal of Medicine



MLA will host three eLearning opportunities during One Health. Anyone not able to attend the meeting will be able to participate in live web-based versions of the three courses. Technical requirements will be sent electronically prior to the annual meeting. For more course and instructor information, see earlier course listings. For questions, please contact Debra Cavanaugh, mlapd3@mlahq.org.

Friday, May 3

8:00 a.m. – noon (Eastern time)

e CE500W Data Curation for Information Professionals
Level: Beginning
Cost: \$240 (nonmember, \$445)
Attendance maximum: 10

CE Courses

1:00 p.m. – 5:00 p.m. (Eastern time)

e CE303W Veterinary and Comparative Medicine: Literature, Resources, and Services
Level: Beginning
Cost: \$240 (nonmember, \$445)
Attendance maximum: 10

Saturday, May 4

8:00 a.m. – noon (Eastern time)

e MT CE201W Business Communications: Library Style
Level: Intermediate
Cost: \$240 (nonmember, \$445)
Attendance maximum: 10

REGISTER ONLINE AT WWW.MLANET.ORG

17

Invitation

Schedule

Speakers

Events

Services

Exhibits

CE Courses

Sponsors

Programs

Registration

Travel

Hotel

Program Sessions

For its 2013 Annual Meeting and Exhibition, MLA will host a special joint international meeting for:

MLA '13: Medical Library Association Annual Meeting and Exhibition

ICML: 11th International Congress on Medical Librarianship

ICAHIS: 7th International Conference of Animal Health Information Specialists

ICLC: 6th International Clinical Librarian Conference

The diversity of thought-provoking programs coordinated by our meeting partners, MLA sections, and special interest groups (SIGs) offers exciting opportunities for professional development.

For information on MLA sections, visit www.mlanet.org/sections/sections.html. For information on MLA SIGs, visit www.mlanet.org/sections/sigs.html.

Beginning in March, use the online program planner to navigate the meeting in advance. Find dates, times, room assignments, presenters, and abstracts. Find descriptions of the program themes, times, and invited speakers at www.mlanet.org/am/am2013/sect_prog/.

Plan Your Time Online

Attendees can use MLA's online program planner to navigate the meeting in advance. The program planner locates all types of sessions. Use the program planner to choose the programs, meetings, and events that you wish to attend. More information regarding this tool will be forthcoming.

Abstracts will only be available online at www.mlanet.org/am/am2013/. A printed version of the abstracts will not be produced to reduce paper use and the impact on the environment.

Program session times are:

Sunday, May 5	1:30 p.m.–3:00 p.m.
	4:30 p.m.–6:00 p.m.
Monday, May 6	10:30 a.m.–noon
	1:30 p.m.–3:00 p.m.
	3:00 p.m.–4:30 p.m.
	4:30 p.m.–6:00 p.m.
Tuesday, May 7	1:30 p.m.–3:00 p.m.
	2:00 p.m.–3:00 p.m.
	3:00 p.m.–4:30 p.m.
	4:30 p.m.–6:00 p.m.
	6:00 p.m.–7:30 p.m.

Programs are organized alphabetically by primary sponsor name and program titles.

Cancer Librarians Section

The Cancer Spectrum: Living, Surviving, and End-of-Life Issues

Chiropractic Libraries Section

Consumer and Patient Health Information Section, Veterinary Medical Libraries Section, Complementary and Alternative Medicine SIG

Promoting Healthy Nutrition and Natural Remedies for Environmental Health and Wellness in Humans and Animals

Collection Development Section

Technical Services Section, Vision Science SIG

Open Access in Action: Trends, Policies, and Institutional Activities in Support of Open Information

Consumer and Patient Health Information Section and Public Health/Health Administration Section

Hospital Libraries Section, Pharmacy and Drug Information Section, Relevant Issues Section

Health Literacy: Linguistic and Cultural Diversity

Consumer and Patient Health Information Section

Library Marketing SIG, Outreach SIG

The Provision of Health Information and Health Care Services to an Aging Population with Chronic Health Conditions

Dental Section

Medical Library Education Section, Molecular Biology and Genomics SIG, International Cooperation Section

Information Support for Our Researchers and Their Partners in Global Settings

Dental Section

Stat!Ref Lecture: Exploring the Research on the Association Between Oral Health and Other Diseases

Educational Media and Technologies Section

Collection Development Section, African American Medical Librarians Alliance SIG

Education and Media: Creative Advice from the Media Experts

Educational Media and Technologies Section

Medical Library Education Section, Libraries in Curriculum SIG

One World: Online Education

Federal Libraries Section

Clinical Librarians and Evidence-Based Health Care SIG, Complementary and Alternative Medicine SIG, Department of the Army Command Libraries SIG, Informationist SIG, Libraries in Curriculum SIG, Osteopathic Libraries SIG, Translational Sciences Collaboration SIG

The Role of Librarians in Evidence-Based Medicine (Parts One and Two)

Federal Libraries Section

Nursing and Allied Health Resources Section, Translational Sciences Collaboration SIG

Evidence-Based Health Policy

Health Association Libraries Section

Medical Library Education Section, Library Marketing SIG

Partnering with the Public: Collaborating with Public Libraries

Program Sessions

History of the Health Sciences Section

Chiropractic Libraries Section, Corporate Information Services Section, Complementary and Alternative Medicine SIG, Osteopathic Libraries SIG

The Role of Alternative and Indigenous Medicine in Global Health: Historical and Contemporary Perspectives

Hospital Libraries Section

Health Association Libraries Section, Clinical Librarians and Evidence-Based Health Care SIG, New Members SIG

Structuring Our Services for the Future in Health Care

ICAHIS

Veterinary Medical Libraries Section

ICAHIS 1: Surveying Current One Health Initiatives

ICAHIS

Veterinary Medical Libraries Section

ICAHIS 2: Animal Health Librarians Collaborating Globally

ICAHIS

Veterinary Medical Libraries Section

ICAHIS 3: Using Modern Technologies to Share Animal Health Information Globally

ICAHIS

Veterinary Medical Libraries Section

ICAHIS 4: Exploring the History and Development of the One Health Concept

ICLC

Corporate Information Services Section, Public Services Section

ICLC 1: Quality Assurance for Clinical Librarians, Informationists, and Embedded Librarians

ICLC

Corporate Information Services Section, Pharmacy and Drug Information Section, Research Section, Institutional Animal Care and Use SIG, Library Marketing SIG

ICLC 2: Emerging Roles for Health Librarians and Finding New Information in Novel Places

ICLC

Pharmacy and Drug Information Section, Institutional Animal Care and Use SIG

ICLC 3: Practicalities of Searching for Clinical Librarians, Informationists, and Embedded Librarians

ICML

Collection Development Section

ICML 1: New Methods of Publishing

ICML

Consumer and Patient Health Information Section, Corporate Information Services Section

ICML 2: Trustworthy and Authoritative Publicly Available Information

ICML

Veterinary Medical Libraries Section

ICML 3: Global Data Sharing to Advance Science and Environmental Aspects of Global Health

International Cooperation Section

Corporate Information Services Section, Federal Libraries Section, Public Health/Health Administration Section

Healthcare Information For All (HIFA 2015)

Leadership and Management Section

History of the Health Sciences Section, Medical Library Education Section, Technical Services Section, Libraries in Curriculum SIG, Outreach SIG, Osteopathic Libraries SIG, Veterinary Medical Libraries Section, International Cooperation Section

Collaborations for Health

Medical Informatics Section

Educational Media and Technologies Section, Hospital Libraries Section

Top Technology Trends VI

Medical Informatics Section

Medical Library Education Section, Molecular Biology and Genomics SIG

Linked Data: Lessons Learned from International Bioinformatics Hubs

Medical Library Education Section

Leadership and Management Section, New Members SIG

Educating for the New Jobs Now: From Library Education to Professional Development and Beyond

Medical Library Education Section

Research Section, New Members SIG

New Voices in an Interdependent World

Nursing and Allied Health Resources Section

African American Medical Librarians Alliance SIG, Libraries in Curriculum SIG, International Cooperation Section

One Need: Supporting Nursing and Health Sciences Provider Practice in a Diverse World

Nursing and Allied Health Resources Section

Veterinary Medical Libraries Section

Around the World in Sixty Minutes: A Fast-Paced Primer on One Health

Pharmacy and Drug Information Section

International Cooperation Section

AccessPharmacy Lecture: International Collaboration Between Health Schools

Pharmacy Drug Information Section and Leadership and Management Section Library Marketing SIG

Enabling and Enriching Transnational and Interprofessional Collaboration

Public Health/Health Administration Section Informationist SIG

The Role of Librarians/Informationists in the Systematic Review

Invitation

Schedule

Speakers

Events

Services

Exhibits

CE Courses

Sponsors

Programs

Registration

Travel

Hotel

Program Sessions

Public Services Section

Federal Libraries Section, Medical Library Education Section, Medical Informatics Section, Molecular Biology and Genomics SIG

Integrating Our Expertise: Engaging Our Partners in Resources at the Bench or at the Point of Care

Relevant Issues Section

Research Section; Lesbian, Gay, Bisexual, and Transgendered Health Science Librarians SIG

How Data Collection and Ethics Intersect in Eliminating Health Disparities

Relevant Issues Section

Technical Services Section, African American Medical Librarians Alliance SIG, Library Marketing SIG, Outreach SIG

Librarians as Partners in Addressing Health Disparities

Research Section

Informationist SIG

Cultural Differences in Scholarly Practice: Diversity in Creation, Dissemination, Use, and Abuse of Intellectual Output

Research Section

Medical Library Education Section, Public Health/Health Administration Section

Librarians as Researchers: Practicing What We Preach in Scholarly Publications

Technical Services Section

Leadership and Management Section, Molecular Biology and Genomics SIG, Research Section

Leading by Design, Not Default: Focused Direction in Support of the User

Veterinary Medical Libraries Section

Institutional Animal Care and Use SIG

People, Animals, and the Environment: One Health Interactions and Perspectives that Enrich Our Lives and Our Work

Veterinary Medical Libraries Section

Public Services Section, African American Medical Librarians Alliance SIG, Institutional Animal Care and Use SIG, Library Marketing SIG, New Members SIG

Librarians at Work: Building a One Health Perspective

General Information

Cancellations

All cancellations for meeting registration and continuing education (CE) courses must be submitted in writing and faxed to MLA Registration at +1.312.419.8950.

Meeting cancellations received by April 3, 2013, are subject to a \$50 fee. You will be assessed a \$50 fee for each CE course change or cancellation.

After April 3, 2013, MLA will give refunds only for documented medical emergencies. Refunds will be processed within 6 weeks after the meeting. MLA will honor written requests to transfer meeting registration or CE registration to another person without charge.

Children

All children must have badges. Complimentary badges are available at the MLA Registration Desk. Children under thirteen are not permitted in the exhibit hall. Information about child care will be available at www.mlanet.org/am/am2013/.

Confirmations

If you register online, you will receive a confirmation by email within minutes. If you register by mail or fax, allow 5 days after receipt for an email confirmation. If an email address is invalid or missing, allow 2 weeks for a faxed confirmation. Please bring your confirmation letter with you to the MLA Registration Desk. Confirmations will be sent only to those who register prior to 11:59 p.m., central time, on April 26, 2013.

Special Services

If you have a legal disability or dietary requirements, please include a written description of your needs with the registration form. Describe your needs and include an email address or fax number where you can be contacted for more information. MLA must receive the form by April 15, 2013.

Student Discount

You qualify for student rates if you hold student membership in MLA. Student members also qualify for CE courses and symposia for only \$50 each, pending available space. You may join MLA as a student member when you register online or complete the membership form online at www.mlanet.org/joinmla/.

Letter of Invitation

If you are an international attendee and require a letter of invitation, see www.mlanet.org/am/am2013/travel.



Smart phone quick response code to online registration.

Questions: For registration and meeting-related questions, please contact Susan Chesniak at +1.312.419.9094 x18 or email, mlafa4@mlahq.org. For continuing education course-related questions, contact Deb Cavanaugh at +1.312.419.9094 x32 or email, mlapd3@mlahq.org.

Member Discount

MLA members in good standing are eligible for discounted member rates. To qualify for member rates, MLA membership for 2013 must be paid by March 31, 2013. Nonmembers may join by paying dues with registration. An application is available at www.mlanet.org/joinmla/. Members of the following groups qualify for MLA member registration rates:

- American Association of Law Libraries (AALL)
- American Medical Informatics Association (AMIA)
- American Public Health Association (APHA)
- Animal Health Information Specialists (AHIS) (UK & Ireland)
- Arbeitsgemeinschaft für Medizinisches Bibliothekswesen (AGMB) [German Medical Library Group]
- Association for Health Information and Libraries in Africa (AHILA)
- Association for Library and Information Science Education (ALISE)
- Canadian Health Libraries Association / Association des bibliothèques de la santé du Canada (CHLA/ABSC)
- Chartered Institute of Library and Information Professionals (CILIP) Health Libraries Group
- Council for Science Editors (CSE)
- European Association for Health Information and Libraries (EAHIL)
- Interagency Council on Information Resources in Nursing (ICIRN)
- International Federation of Library Associations and Institutions (IFLA) Health and Biosciences Libraries Section
- Medical Library Association of Nigeria
- Special Libraries Association (SLA)
- Taiwan Medical Library Association (TMLA)

How to Register

Three Ways to Register

1. Go online at www.mlanet.org/am/am2013/register/ (online saves time)
2. Mail your registration form with payment to CDS-MLA, 107 Waterhouse Road, Bourne, MA 02532
3. Fax your registration form with credit card payment to +1.508.743.9662

Register by **April 3, 2013**, to receive the early-bird discount and save \$80! After April 26, 2013, bring the form to the registration desk at the John B. Hynes Veterans Memorial Convention Center for onsite registration.

Registration Hours

Meeting material will be distributed at the MLA Registration Desk located at the convention center.

Thursday, May 2	4:00 p.m.–7:00 p.m.
Friday, May 3	7:00 a.m.–7:00 p.m.
Saturday, May 4	7:00 a.m.–7:30 p.m.
Sunday, May 5	7:00 a.m.–5:00 p.m.
Monday, May 6	7:00 a.m.–5:00 p.m.
Tuesday, May 7	7:00 a.m.–5:00 p.m.
Wednesday, May 8	7:00 a.m.–10:30 a.m. noon–1:00 p.m.

Payment

Payment must accompany your registration. You may pay by check (payable to MLA), money order, Visa, MasterCard, American Express, or Discover. Payments must be in US dollars and free of bank charges. Only registrations paid by credit card or purchase orders may be faxed to +1.508.743.9662.

If you are an MLA member and would like to be invoiced, you must include a purchase order with your registration. Payments not received by June 20, 2013, will be charged an \$80 late fee.

FEDLINK Payment

If you have an existing FEDLINK Training account that you want MLA to bill, check the appropriate box on the registration form and enter your account information. Registration is subject to payment confirmation by FEDLINK. For questions regarding your FEDLINK account, please contact Elinda Deans at +1.202.707.4848.

Electronic/Wire Transfer Information

Bank name: JP Morgan Chase Bank
 Bank branch address: 150 N. Michigan Avenue, Chicago, IL 60601
 Bank swift code: CHASUS33
 Bank routing number: 071000013
 Owner account number: 81865 1028
 Owner: Medical Library Association, 65 E. Wacker Place, Suite 1900, Chicago IL USA
 Purpose for payment: enter name of registrant

If you have questions, contact Susan Chesniak, email, mlafa4@mlahq.org, or phone, +1.312.419.9094 x18, or Ray Naegele, email, naegele@mlahq.org, or phone, +1.312.419.9094 x17.

Registration Packages

All registrants will have online access to audio recordings of most meeting sessions, with visual electronic presentations. Online access enables convenient access to meeting presentations to review the sessions you attended and hear sessions for the first time.

In addition, meeting registrants have online access to video of selected plenary sessions and posters. Posters will be live online a few weeks prior to the meeting.

Please select the registration package that best fits your interest and budget. The table lists features of each package.

Features	A	B	C	D
Online access to audio sessions with electronic presentations	X	X	X	X
Online access to streaming video of keynote and other select plenary sessions	X	X	X	X
Online access to posters before, during, and after the meeting	X	X	X	X
Online access to program and abstract book	X	X	X	X
Online access to program planner	X	X	X	X
Access to meeting sessions and Hall of Exhibits	X	X	X	
1 Ticket to the Welcome Reception	X	X		
1 Ticket to the Awards Ceremony and Luncheon	X			
1 Ticket to the Taste of Boston Party	X			

Register early to qualify for the discounted fees listed on the registration form. After midnight, central time, Wednesday, April 3, 2013, fees increase \$80.

Package A: Inclusive

Includes admission to all sessions, exhibits, the Welcome Reception, the Awards Ceremony and Luncheon, and the Taste of Boston Party. This package provides the best value.

Package B: Conference only

Includes admission to all sessions, exhibits, and the Welcome Reception.

Package C: One day

Includes admission to all sessions and exhibits on a specific day, with the exception of ticketed events. On the registration form, indicate the day you wish to attend.

Package D: Individual e-Conference

Members who cannot travel to the meeting can still be part of the meeting community via online access.

Package E: Institutional e-Conference License

Institutional Members: \$500
 Non-MLA Institutional Members: \$750
 Go to MLANET for the site license form.

Exhibits-only

Exhibits-only allows entry only to the Hall of Exhibits from Sunday to Tuesday for spouses, significant others, and persons working outside the profession. It does not provide admission to the Saturday Welcome Reception, plenary sessions, or meeting programming or access to online meeting content. Exhibit-only passes are sold onsite at the MLA Registration Desk for \$20.

THREE WAYS TO REGISTER FOR ONE HEALTH: 1. Go online: www.mlanet.org 2. Mail form to: CDS-MLA, 107 Waterhouse Road, Bourne, MA 02532 3. Fax: +1.508.743.9662

FIRST NAME* _____ LAST NAME* _____

INSTITUTION/ORGANIZATION/COMPANY* _____

LIBRARY/AGENCY/DEPARTMENT* _____

MAILING ADDRESS _____

CITY* _____ STATE/PROVINCE _____ ZIP/POSTAL CODE _____

EMAIL ADDRESS (REQUIRED FOR EMAIL CONFIRMATION) _____

ADDITIONAL EMAIL TO RECEIVE CONFIRMATION (OPTIONAL) Check box if you do not want exhibitor email

COUNTRY* (IF OUTSIDE THE US) _____ * APPEARS ON BADGE

MLA MEMBER ID _____ **Indicate MLA voting rights:**
 Individual Institutional

Attending: MLA ICML ICAHIS ICLC
 (check all that apply)

If you require accommodations, please attach a written description of your needs.

Check here if you have any dietary restrictions.
 Please describe: _____

DAYTIME TELEPHONE _____

CELLULAR TELEPHONE (WILL NOT BE PUBLISHED) _____

FAX NUMBER _____

I. REGISTRATION FEES (Circle one category within package.)

*See "member discount" on page 21 for more information.

	On or before Apr. 3	After Apr. 3
Package A: Inclusive		
• Member/institutional representative*	\$510	\$590
• MLA emeritus member	\$255	\$335
• MLA student member	\$195	\$195
• Nonmember	\$765	\$845
Package B: Conference only		
• Member/institutional representative*	\$365	\$445
• MLA emeritus member	\$180	\$260
• MLA student member	\$ 25	\$ 25
• Nonmember	\$540	\$620
Package C: One-day attendance		
Indicate day: <input type="checkbox"/> Sun <input type="checkbox"/> Mon <input type="checkbox"/> Tue <input type="checkbox"/> Wed		
• Member/institutional representative*	\$225	\$305
• MLA emeritus member	\$115	\$195
• Nonmember	\$340	\$420
Package D: e-Conference		
• MLA member/institutional representative*	\$120	\$130
• MLA emeritus member	\$ 60	\$ 70
• MLA student member	\$ 25	\$ 25
• Nonmember	\$180	\$190

SECTION I. SUBTOTAL \$ _____

II. ADDITIONAL TICKETS (One ticket to each of these 3 events is included with Package A.)

- Welcome Reception # _____ @ \$40 = \$ _____
- Awards Ceremony and Luncheon. . # _____ @ \$75 = \$ _____
- All-Conference Reception:
 Taste of Boston Party. # _____ @ \$100 = \$ _____
 Children under 18 # _____ @ \$60 = \$ _____

OPTIONAL TICKETS

- Chapter Council Presents Chapter Sharing Roundtables
Must include topic # _____ # _____ @ \$42 = \$ _____
 (See page 8)

CHECK BOX IF:

- New Member*/First-time Attendee
 *MLA members of 3 or fewer years or members who are attending their first annual meeting.
- Hospital Libraries Section Business Meeting and Ice Cream Social (Monday, 4:30–6 p.m.)

SECTION II. SUBTOTAL \$ _____

III. CONTINUING EDUCATION COURSES (Enter course number and cost found on MLANET.)

Date	First choice Full-day, 6-hr., or half-day a.m.		First choice Half-day p.m.		First choice only Subtotal	Second choice Full-day, 6-hr., or half-day a.m.	Second choice Half-day p.m.
	Course #	\$ Amount	Course #	\$ Amount		Course #	Course #
MAY 3/DAY 1							
MAY 4/DAY 2							
MAY 8/DAY 3							

SECTION III. SUBTOTAL (first choice only) \$ _____

IV. MLA MEMBERSHIP DUES

(Indicate membership status.)

Go to www.mlanet.org/joinmla/

- NM701 New member
(attach application)
- RM702 Membership renewal
(attach your latest invoice or application form)

SECTION IV. SUBTOTAL \$ _____

SECTION I \$ _____
 SECTION II \$ _____
 SECTION III \$ _____
 SECTION IV \$ _____
TOTAL \$ _____

For credit card orders, MLA will correct any errors in addition.

PAYMENT INFORMATION (in US funds)

- Check or international check in US \$ drawn against a US bank
 (Make check payable to Medical Library Association and mail to address at top)
 - AmEx Discover MasterCard Visa Electronic/wire transfer (see page 22)
 - Bill my existing FEDLINK training account:
 FEDLINK ID: _____ OCLC SYM: _____ (see page 22)
- PRINT NAME _____
 CARD NUMBER _____ EXP. DATE _____
 SIGNATURE _____

Travel Information

Air Travel

MLA has arranged for discounted travel.

American Airlines

Use the instructions below for a discount (up to 5%) on American Airlines for travel May 1–May 10, 2013.

- Book online at www.aa.com/group/ for American Airlines and American Eagle flights. Use “6953BM” as the promotion code.
- Call +1.800.433.1790 and reference authorization number “A6953BM.” A reservations service charge of \$25.00 USD per ticket will apply for tickets purchased through American Airlines Reservations, subject to change.

United Airlines

Use the instructions below for a discount (2%–10%, depending on zone) on United Airlines for travel April 30, 2013–May 11, 2013.

- Book your reservations online at www.united.com. Enter “ZN7W633827” in the offer code box.
- If booking through a travel professional or United Meetings at +1.800.426.1122, please give them the following information: Agreement Code: 633827, Z Code: ZN7W. Note: A \$25 service fee applies if booking through United Meetings. Attendees are strongly encouraged to book online at www.united.com.
- Outside of the United States, please call your local United Airlines reservation office.

Car Rental

Contact Avis at +1.800.331.1600 and refer to “AWD# D010039” to reserve your car at a discounted rate. You can also make reservations online at www.avis.com/car-rental/html/meetings/go2.html?AWD=D010039&NAME=Medical+Library+Association+-+Boston+-+05/13&FDATE=05012013&TDATE=20130510&LOCATION2=&LOCATION1=Boston,+MA&RCIATA=&EVENT=0

Ground Transportation to and from Boston Logan International Airport

MassPort’s GetUthere

For pre-trip planning, consult MassPort’s GetUthere (www.massport.com/massport/gtu/Pages/default.aspx) application. Once you enter your starting point and destination, GetUthere will plan your route using a variety of public transportation options.

Shuttle Vans

Go Boston Shuttle (www.gobostonshuttle.com) provides van service from Logan Airport to Boston area hotels. Service to John B. Hynes Veterans Memorial Convention Center hotels costs approximately \$17.00 each way. Prices are subject to change. Reservations for airport pick up can be made in advance of your trip through Go Boston Shuttle’s website.

Taxi

Taxi stands are located in front of each terminal. Fares begin at \$2.60 for the first 1/7 mile, plus \$0.40 for each additional 1/7 mile. Passengers should expect to pay \$8.00 in addition to the fare to cover tolls and airport surcharges. Total fare to the John B. Hynes Veterans Memorial Convention Center and Sheraton Boston Hotel will cost approximately \$30.00 without tip.

Public Transportation

Massachusetts Bay Transportation Authority (MBTA, www.mbta.com) Subway (known locally as the “T”) costs a \$2.00 fare, with ticket purchased from kiosk in station. From airport terminals, take the free Massport shuttle (Route #66) to Airport Station on the Blue Line. Take an inbound train (toward Bowdoin) to Government Center Station. From Government Center Station, follow signs to the Green Line on the upper level. Take the Green Line westbound to the meeting hotel or convention center:

- John B. Hynes Veterans Memorial Convention Center: Take a “B”/Boston College, “C”/Cleveland Circle, or “D”/Riverside Green Line train to the Hynes Convention Center Station. Exit toward Massachusetts Avenue, turn left and walk along Massachusetts Avenue to Boylston Street. Cross Boylston and turn left; the convention center lower-level entrance is two blocks on your right.
- Sheraton Boston: Take an “E”/Heath Street Green Line train to the Prudential Station. Walk two blocks northwest on Belvidere Street, turn right on Dalton Street, and walk a short distance to hotel.

Plan your return trip to Logan Airport by accessing the MBTA’s website: Taking the T to and from Logan (www.mbta.com/riding_the_t/logan/).

Other Options for Getting to Boston

Train

Amtrak offers multiple rail routes into Boston’s South Station, including the Acela Express. Less frequent service into Boston’s Back Bay Station (www.amtrak.com/servlet/ContentServer?pagename=am/am2Station/Station_Page&code=BBY) is also available.

Bus

Megabus (us.megabus.com) offers service to Boston from numerous cities in the Northeast Corridor, including Baltimore, MD; Burlington, VT; Hartford, CT; New Haven, CT; New York, NY; Philadelphia, PA; Portland, ME; and Washington, DC. All arrivals and departures in Boston are located at Boston’s South Station (www.south-station.net). Arrivals are located at gate 11, and departures are located at gate 12.

MLA has negotiated a limited number of rooms at discounted rates. Reservations must be made by April 10, 2013, to receive the discount. Subject to availability.

Support MLA by booking your reservations under the MLA room block at One Health's official hotel. Your patronage of the meeting hotel makes it possible for MLA to secure the space necessary for this event at a greatly reduced cost. The hotel not only offers discounted rates and the best networking opportunities, but staying in the group blocks helps the association meet its contractual obligation to the hotel, avoid penalties, and keep meeting registration prices down. We thank you in advance for your support.

Sheraton Boston Hotel

39 Dalton Street
Boston, MA 02199 USA
+1.617.236.2000

To book your room online, go to www.mlanet.org/am/am2013/travel/hotel.html.

Call-in reservations: Attendees can call Starwood central reservations, +1.888.627.7054, and ask for the room rate for "Medical Library Association Joint Meeting with ICML."

Guarantee: Attendees will need a valid credit card to make the reservation. A deposit equal to one night's stay is required.

Cancellation: The deposit is refundable only if notice is received by the hotel at least 72 hours prior to arrival and a cancellation number is obtained.

Reservations must be made by April 10, 2013, to receive the below rates. Subject to availability.

- Single/Double: \$229 (plus tax)
- Double/Twins: \$229 (plus tax)
- Club: \$269 (plus tax)
- Suites: \$289 and up (plus tax)
- Additional Person: \$40 (plus tax)



Smart phone quick response code to online reservations.

Attention: Please be aware that organizations may contact you to ask if they can help you make a hotel reservation for the MLA annual meeting. These organizations are *not* authorized to do so by MLA. The only safe way to make your housing reservation is to contact the hotel directly. Be sure to identify yourself with MLA to get the group rate.

New! AHIP Online Submissions

MLA is proud to announce a new online system for the Academy of Health Information Professionals. The new system allows downloadable fill-in academy forms, uploading or emailing of your professional portfolio, and secure, online payments.

Visit www.mlanet.org/academy/whatsnew-online-submissions.html for complete details.

Comments, questions, and suggestions can be sent to Kathleen Combs, MLA's director for professional development, at mlapd1@mlahq.org.





Online Jobs Center

MLA's job postings help individuals locate **quality jobs** and aid institutions in their search for top-notch employees.

Institutional members of MLA are entitled to a **discount** on all job postings!

New jobs will be added **every week**.

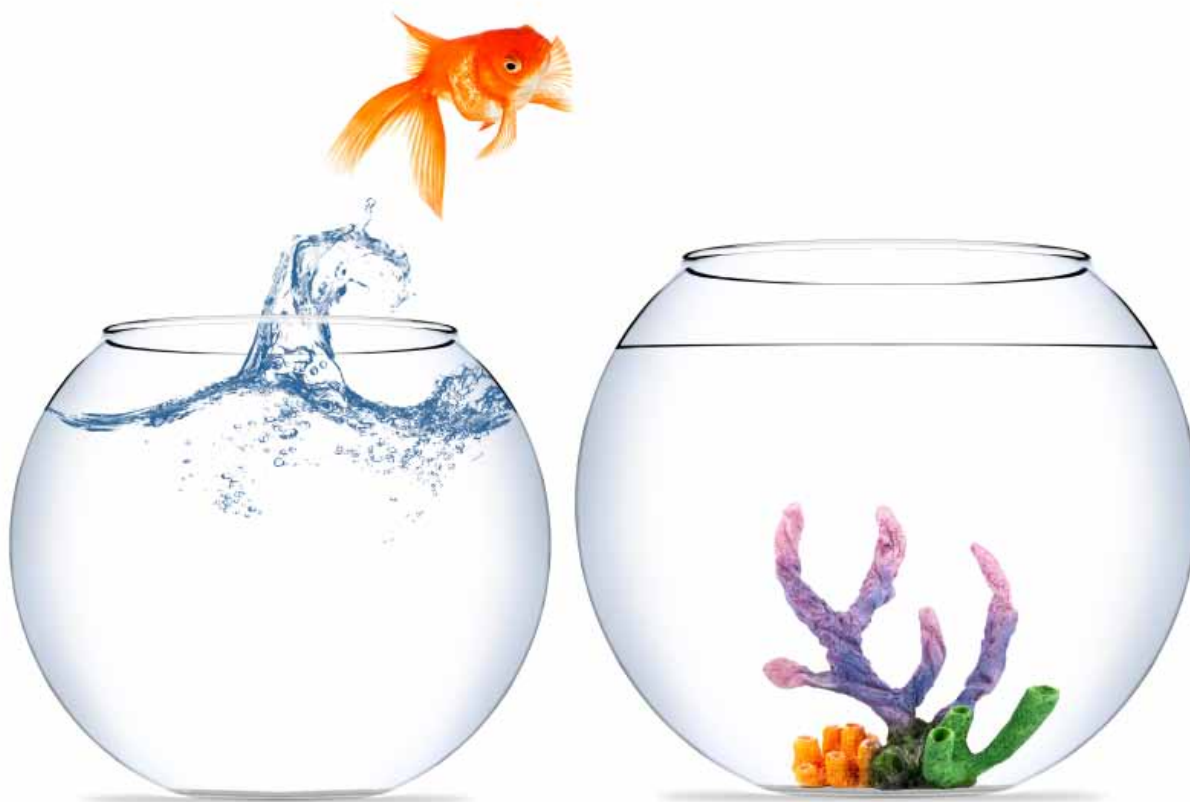
Visit www.mlanet.org/jobs/ to see the latest job opportunities.



MLA Member Benefit: Bibkits and Dockits

As an MLA member, you have an archive of professional knowledge at your fingertips. All out-of-print MLA Bibkits and Dockits are available to MLA members free of charge as e-books.

Just go to www.mlanet.org/publications/bibkits/index.html
or
www.mlanet.org/publications/dockits/index.html



Going through Some *Changes?*

Has your contact information changed recently? Don't forget to update your member record with your new e-mail address, mailing address, or phone number to keep receiving MLA publications, ballots, membership renewals, and other important information . Go to www.mlanet.org/members and log in, select "Go to My Account," and then select "My MLA Contact and Profile Information" (second option on the left).

Misplaced your username or password? Go to www.mlanet.org/members and follow the link below the login box, or call 312.419.9094 to request your log in information over the phone.

Introducing...

JBJS Online Archives 1889-1999

An investment for your future.

JBJS is proud to offer a new product available for purchase, the **JBJS Archives, 1889-1999**. We've worked hard to perfect our online archives, and are pleased to announce it's ready for sale. Over 100 years of the best that orthopaedics has to offer, a one-time purchase for perpetual access.

The **JBJS Archives, 1889-1999** is comprised of...

- over 1,000 issues
- approximately 200,000 pages
- more than 22,000 articles

As of January 1, 2013, our archives from 1889-1999 will be placed behind access controls and no longer be freely available.

In the USA \$4,500.00 | Outside of the USA \$4,700.00



**Purchase the JBJS Online Archive now.
Free up valuable shelf space!**



DON'T MISS OUT – ORDER TODAY!

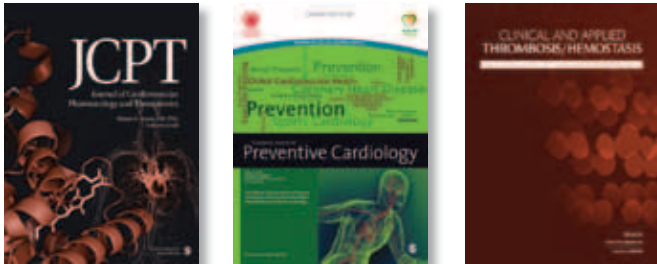
For purchase, please email subs@jbjs.org,
call +1 781.449.9780, or contact your agent.



SAGE Medical Collections

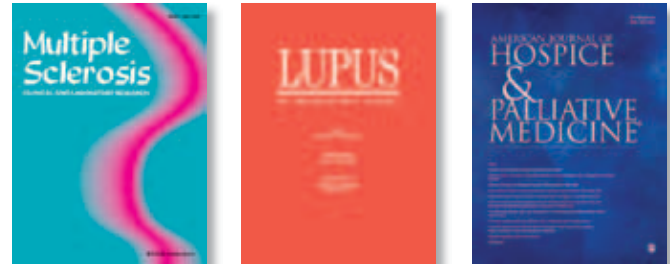
Featuring key titles...

Cardiology and Cardiovascular Medicine Collection



21 titles total

Palliative Medicine and Chronic Care Collection



16 titles total

Oncology Collection



10 titles total

Pediatrics Collection



21 titles total

Orthopaedics and Sports Medicine Collection



10 titles total

Pharmacology and Biomedical Collection



55 titles total

Also available:

Science, Technology, and Medicine package—219 titles

Health Sciences discipline package—177 titles

Clinical Medicine discipline package—118 titles

For more information on pricing and title details, please contact your
SAGE Library Sales Manager:

Deb Davis: Deborah.Davis@sagepub.com or 847-229-0048

Bob Schufreider : Robert.Schufreider@sagepub.com or 805-410-6142



Visit Ovid at MLA 2013

Only on
Ovid!

Joanna Briggs
Institute EBP
Resources!

Helping your
institution implement
evidence-based practice.

Evidence-rich content and tools from
a leading provider of evidence-based
information – only available on Ovid!

See what else is new at Ovid!

- Immediate access to full text resources – at no cost – now available through **OvidOpenAccess** on **OvidSP** featuring regional, hard-to-find, trusted open access content from **Medknow** – publisher of over 200 STM open access journals
- Brand new **Primal Pictures** modules, Fast Facts handbooks from **Health Press**, Extended Archives from **LWW**, Nature Reviews series from **Nature Publishing Group** and much more
- Full-text PDFs now available for the *New England Journal of Medicine* plus three additional years of archive access, back to 1990

Stop by the Ovid booth to learn more. See you in May!

FPO: AD

ELSEVIER CLINICAL KEY

**FULL PAGE
COLOR
WITH BLEEDS**