

# THE FUTURE

# IN FOCUS



## Preliminary Program

THE PREMIER EVENT IN HEALTH SCIENCES INFORMATION

REGISTER BY APRIL 8 AND SAVE!

MLA '20 TOP SPONSORS



# EFTS

INTERLIBRARY FUND TRANSFER



## MLA to Launch a New EFTS System!

**UHC informed EFTS users that UHC would regretfully cease EFTS operations. Since this announcement, MLA, UHC, and NLM have collaborated on an MLA solution to launch a new and enhanced EFTS platform.**

**MLA will proceed with development and implementation of a new electronic fund transfer system (EFTS) for interlibrary fund transfers.**

- Participating libraries can exchange funds to pay for interlibrary loans (ILLs).
- US and non-US libraries in good standing, with an active DOCLINE account and associated DOCLINE identification (LIBID), can sign up.
- There is NO requirement to be an MLA member and NO requirement to be a current EFTS library.

### **You are in control!**

- Automated notices: Participating libraries receive notices for payment automatically. No more calling; no more faxing credit card information
- Account security: You can securely handle transactions. Use credit cards or checks. Use whatever works best for you.
- Flexible account configuration: You load funds into your library's EFTS Wallet by check, credit card, or eTransfer. ILL transactions are automatically deducted.
- Useful dashboard, reporting, and notifications.

To find more information  
and to request a user agreement,  
visit [MLANET.ORG/EFTS](https://mlanet.org/efts).

Thank you to the 750+ libraries  
who have expressed their  
interest in the new EFTS system.





The NEW ENGLAND  
JOURNAL of MEDICINE

NEJM.ORG

# Use NEJM.org to enhance skills, increase knowledge, and improve clinical care.

- Videos in Clinical Medicine
- Quick Take Videos
- Images in Clinical Medicine
- Image Challenge
- Interactive Medical Cases
- Clinical Problem Solving
- Case Challenge
- Visual Abstracts



For more information visit us at booth #409.



# TABLE OF CONTENTS

Why Attend/What's New.....	6
Featured Speakers.....	8
Open Science and Janet Doe Lecture....	10
Clinical Support.....	12
Education.....	14
Global Health & Health Equity.....	16
Information Management.....	18
Information Services.....	20
Innovation & Research Practice.....	22
Professionalism & Leadership.....	24
Hall of Exhibits/Sponsors.....	26
Professional Interactions.....	28
MLA Career Planning Center.....	30
Continuing Education Courses.....	32
Schedule-at-a-Glance.....	38
How to Register.....	40
Registration Form.....	42
CE Courses Selection Form.....	43
Hotel Information.....	44
Travel Information.....	45
Notes.....	48

## 2020 National Program Committee (NPC)

**Janna C. Lawrence**, AHIP, Chair  
**Melissa De Santis**, AHIP, Cochair  
**Stephanie C. Kerns**, Local Assistance Committee Cochair  
**Tami Wilkerson**, Local Assistance Committee Cochair  
**Andrea H. Denton**  
**Linné Girouard**, AHIP  
**Karen Gutzman**  
**Liz Kellermeier**  
**Nandita S. Mani**  
**Darlene Parker-Kelly**  
**Melissa L. Rethlefsen**, AHIP  
**Martin Wood**  
**Michelle L. Zafron**, AHIP  
**Harold S. Bright IV**, AHIP, Community Council Liaison  
**Julia Esparza**, AHIP, Board Liaison  
**Andrea C. Kepsel**, AHIP, Education Annual Planning Committee Liaison  
**Cristina Pope**, AHIP, Chapter Council Liaison  
**Gabriel R. Rios**, InSight Initiative Liaison  
**Kevin Baliozian**, Executive Director  
**Debra Cavanaugh**, Staff Liaison, Contributed Content  
**Kate E. Corcoran**, Staff Liaison  
**Martha Lara**, Staff Liaison, Marketing & Communications  
**Natalie Bello**, Senior Manager, Association Events  
**Janet McClenny**, Manager, Association Events





# Make plans now to be in Portland May 15 through May 19, 2020, for “MLA 2020 Vision: The Future in Focus!”

The 2020 National Program Committee and the Local Assistance Committee are planning an exciting, informative, and fun meeting.



**20/20 vision describes sharpness or clarity of vision, but that does not mean those are the only factors affecting vision. According to the American Optometric Association, other vision skills include focusing ability, eye coordination, depth perception, and peripheral awareness. Keeping those topics in mind, the 2020 National Program Committee has been hard at work:**

- Improving “clarity” by organizing contributed content based on MLA’s seven practice areas
- “Focusing” the meeting by making it a half day shorter than recent meetings
- Refining “coordination” by rearranging the meeting schedule based on feedback from previous meetings
- Appreciating the “depth” of our profession, through the lens of the Janet Doe Lecture
- Increasing “peripheral awareness” with a plenary session on health inequities and another on “Open Science”

All of us are working hard to bring the future into focus. The great programming and networking opportunities planned for MLA '20 will sharpen skills and increase perceptiveness as we move into the future. We look forward to seeing you in Portland!



Janna C. Lawrence,  
AHIP, Chair, 2020  
National Program Committee



Melissa De Santis, AHIP,  
Cochair, 2020 National  
Program Committee

## Education. Networking. Relationships.

### A meeting you can't afford to miss

MLA '20: "2020 Vision: The Future in Focus" is designed for you to customize your experience and to focus on your individual goals and the goals of your organization. No matter what your plan, these are features we know you will encounter:

- 1. Education you can use:** Know what is new and what is working for others to stay on top of your game and effectively meet the expectations of your current and future patrons. Meeting content is practical and relates to your job responsibilities.
- 2. Connect with your professional peers:** Maximize your networking opportunities, share with and learn from others, and connect with your colleagues at MLA caucus meetings on specific sub-specialties and affinities, and at new member and first-time attendee events.
- 3. Talk with your vendors:** Let vendors know how to improve their products, and learn from vendors how to improve what you do and how you do it:
  - Keep up-to-date on opportunities and developments in services and products (53% of MLA '19 attendees did)
  - Find new products you can immediately apply in your professional setting (42% did)
  - Discover new companies to do business with (35% did)
- 4. Set yourself up for success:** Attend the meeting and participate in MLA activities that are essential to your career development. Colleagues can help you improve your resume, explore new career paths, and find your next job. Presenting at the meeting gives you visibility and increased credibility.

### Make Your Case to Attend

Focus on the benefits of your attendance at the meeting

Demonstrate your commitment and service to the association, like presenting a paper or poster, volunteering, or collaborating efforts for association improvement

Emphasize the benefits to your institution, such as opportunity for your professional development and the return-on-investment that your institution will receive from your attendance.

“  
MLA is the one place that I can get good programming, meaningful peer interactions, and updates from vendors across all of the topics I'm interested in.  
”

## What's going on at MLA '20, and what's new:

	MLA '20	What's improved?
<b>Pre-Meeting Continuing Education (extra fee)</b>	Courses by experts in a variety of subjects	Now offering 2 courses dedicated to Diversity and Inclusion
<b>Meeting Length</b>	From Saturday, May 16, 5:00 p.m., to Tuesday, May 19, 8:00 p.m.	Meeting ends on Tuesday evening (not Wednesday morning)
<b>Attendee Experience</b>	<b>Mix of:</b> <ul style="list-style-type: none"> <li>• Plenary sessions</li> <li>• Breakouts in multiple formats</li> <li>• Vendor interactions</li> <li>• Networking events</li> </ul>	<ul style="list-style-type: none"> <li>• Keynotes and breakouts mixed out during the day</li> <li>• Food trucks outside the Convention Center and near the exhibit hall</li> <li>• Committee meetings in the early morning only</li> <li>• Caucus meetings at the end of the day (Sunday/Monday) and lunch (Tuesday: no exhibits)</li> </ul>
<b>Diversity and Inclusion</b>	Content around MLA's 7 areas of practice  Welcoming and inclusive culture and practice  Diversity and Inclusion Task Force "Human Library" Event	Content for all interests  Quiet rooms and wellness activities
<b>Keynote Speakers</b>	Perspectives from inside and outside the profession	Janet Doe Lecture closes the meeting followed by a reception open to all attendees (no more optional Tuesday night networking dinner)
<b>Contributed Content</b>	<b>48 breakout sessions:</b> <ul style="list-style-type: none"> <li>• Immersion Sessions: deep-dive interactive learning</li> <li>• Papers</li> <li>• Posters</li> <li>• Lightning Talks</li> </ul>	The two poster sessions are organized midday on the periphery of the exhibit floor and do not conflict with association meetings
<b>Themed Session</b>	The "Open Science" session (Tuesday afternoon) with a plenary session, small-group discussions, and multiple interactions	New concept for MLA '20
<b>Interactions with Vendors</b>	<ul style="list-style-type: none"> <li>• Welcome reception</li> <li>• Exhibits</li> <li>• Sunrise Seminars</li> <li>• Lunch &amp; Learns</li> <li>• Technology Showcases</li> </ul>	Exhibit hours increased from 13 to 17 hours, with less "conflict" time
<b>Networking</b>	<b>Multiple opportunities to connect:</b> <ul style="list-style-type: none"> <li>• New Member/First-Time Attendee breakfast</li> <li>• International attendees</li> <li>• Caucus gatherings</li> <li>• Informal dine-arounds</li> <li>• Vendor receptions</li> <li>• Ad-hoc gatherings</li> </ul>	MLA caucuses will gather during 6 45-minute time periods, around social activities and themed interactions

## FEATURED SPEAKERS



**Sunday, May 17, 9:00 a.m.–10:20 a.m.**

### **Welcome, Awards, and Presidential Address**

Julia Esparza, AHIP, is the associate director for the Health Sciences Library, Louisiana State University (LSU) Health–Shreveport. She is a professor in the Department of Medical Library Science and is the Stafford and Marianne Comegys Endowed Professor in Medical Library Science.

In her presidential address, Esparza will spotlight the amazing changes that have occurred in the structure of the organization and highlight the many accomplishments of the members of MLA who make up the success of the organization.



**Sunday, May 17, 3:30 p.m.–4:50 p.m.**

### **John P. McGovern Lecturer: Esther Choo**

Esther Choo is a clinician, researcher, and advocate. Currently an associate professor in the Center for Policy and Research in Emergency Medicine at Oregon Health & Science University, she is a practicing physician and National Institutes of Health (NIH)–funded investigator, with expertise in drug policy, injury, and gender disparities in health care. She is also cofounder of Equity Quotient, a company that provides metrics on health care culture. She is a founding member and strategic lead for TIME'S UP Healthcare, an initiative of the TIME'S UP Foundation that advocates for safety and equity in the health care workforce. Her published work on gender inequity and sexual harassment in health care includes pieces in the *New England Journal of Medicine*, *JAMA Internal Medicine*, *The Lancet*, *BMJ*, and *Harvard Business Review*.

In her research on harassment in health care, Choo has advocated that organizations, including professional societies, need to fix organizational structures that create inequities. Choo and the 2020 National Program Committee believe that there is a role for health sciences librarians to play in making these changes whether they are working in hospitals, academic institutions, or any of other many places librarians are employed.



**Monday, May 18, 3:30 p.m.–4:50 p.m.**

### **MLA Business Meeting, Awards, and Presidential Inaugural Address**

Lisa K. Traditi, AHIP, associate professor and deputy director, Strauss Health Sciences Library, University of Colorado Anschutz Medical Campus–Aurora, was a hospital librarian for nine years in the Denver metro area before joining the faculty of the library at the University of Colorado Anschutz Medical Campus in 1996. Traditi has served MLA as a member and secretary of the Board of Directors, cochair of the Annual Meeting Innovation Task Force, chair of the *MLA News* Editor Search Committee, and member of the *Journal of the Medical Library Association* Editor-in-Chief Search Committee, Nominating Committee, and Chapter Council. She has also been active in the Educational Media and Technologies Section, Leadership and Management Section, Medical Informatics Section, and Public Services Section. Traditi has twice been chair of the Midcontinental Chapter of MLA (MCMLA) and was president of the Colorado Council of Medical Librarians (CCML). Traditi received her master's in library science from the University of Arizona in 1984 and is a Distinguished Member of the Academy of Health Information Professionals.

In her presidential address, Traditi will share MLA's vision and plan for 2020/21 and the personal journey that led her to this day.



**Tuesday, May 19, 9:00 a.m.–9:55 a.m.**

### **NLM Update**

Since its founding in 1836, the National Library of Medicine (NLM) has played a pivotal role in translating biomedical research into practice and is a leader in information innovation. As one of the twenty-seven institutes and centers at the National Institutes of Health, NLM advances research in biomedical informatics and data science and is the world’s largest medical library. Millions of scientists, health professionals, and the public use NLM services every day.

NLM will present an update that highlights available resources, consumer health news, and accompanying information from MedlinePlus.



**Tuesday, May 19, 5:30 p.m.–8:00 p.m.**

### **Janet Doe Lecturer: Chris Shaffer, AHIP**

Chris Shaffer, AHIP, joined the University of California–San Francisco (UCSF) as university librarian, assistant vice chancellor for academic information management, and adjunct professor, Department of Medicine, in August 2017. Previously, he was university librarian and associate professor at Oregon Health & Science University (OHSU) for nine years. He has helped plan interprofessional education initiatives and worked with research offices and Clinical and Translational Science Award centers to develop new library services for researchers. At OHSU, he worked with Melissa Haendel to establish the Ontology Development Group, which promoted research innovations, service development, and education through semantically enabled technologies for the purposes of data management and publication, research reproducibility, and the building of novel tools for biomedical data exploration.

Shaffer is an active member of MLA, where he recently finished a term as treasurer on the Board of Directors and is a Distinguished Member of the Academy of Health Information Professionals. His other past positions include assistant director for technology and outreach at the University of Iowa Hardin Library for the Health Sciences; technology coordinator for the National Network of Libraries of Medicine, Greater Midwest Region; and resident librarian at the University of Illinois–Chicago. He holds a bachelor of arts degree in philosophy from Texas A&M University and a master of science degree in information science from the University of North Texas.



**The presenters are such bastions of knowledge in this area; so grateful to have taken this class. Really helped bring me up to speed.**



Early bird registrants will have FREE access to a special "Introduction to Open Science" webinar. The webinar prepares attendees to fully participate in the Open Science Session. The webinar will also be available for purchase. Details are available on MEDLIB-ED.org.

## Roles to Play: Open Science for Health Sciences Librarians

Open science is the movement to make research and its dissemination accessible to all. Open science facilitates transparent and accessible knowledge that is shared and developed through collaborative networks.

At the heart of open science is the belief that there should be an open exchange of ideas that accelerates scientific progress and creates a more inclusive research ecosystem. A panel of early career researchers, senior investigators, and librarians will share their perspectives on open science, its importance, and the role of health sciences libraries and the medical librarian in supporting open science globally.

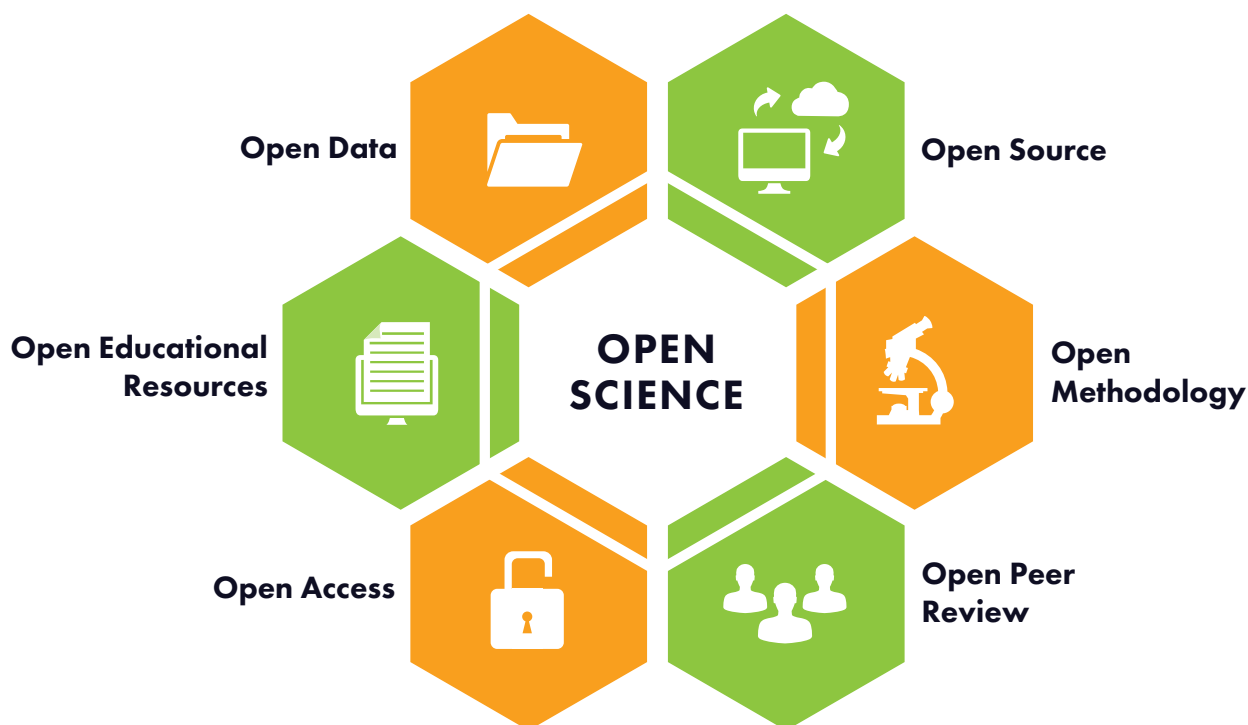
Join us for a conversation on open science and the role of the medical librarian. The session will continue with breakout sessions and end with an "unconference"-style brainstorming session.

### Concurrent Breakout Sessions

**Field Notes:** Medical Librarians' Stories of Open Science Education and Advocacy

**Tool Talk:** Open Science Technologies and the Role of Librarians

**Policy Brief:** Changing Policy and the Research Landscape



## Janet Doe Lecturer: Chris Shaffer, AHIP

New for MLA '20: The National Program Committee has selected the Janet Doe Lecture to be the capstone event culminating a weeklong educational experience at MLA '20. This prestigious lecture, in honor of Janet Doe (1895–1985), former librarian of the New York Academy of Medicine, historical scholar, past president of the association, and editor of the first two editions of the *Handbook of Medical Library Practice*, is presented by the recipient for their contribution to medical librarianship. The presentation will be followed by the Tuesday evening reception that is open to all attendees.

Chris Shaffer, AHIP, joined the University of California–San Francisco (UCSF) as university librarian, assistant vice chancellor for academic information management, and adjunct professor, Department of Medicine, in August 2017. Previously, he was university librarian and associate professor at Oregon Health & Science University (OHSU). He has helped plan interprofessional education initiatives and worked with research offices and Clinical and Translational Science Award centers to develop new library services for researchers. His other past positions include assistant director for technology and outreach at the University of Iowa Hardin Library for the Health Sciences; technology coordinator for the National Network of Libraries of Medicine, Greater Midwest Region; and resident librarian at the University of Illinois–Chicago. Shaffer is an active member of MLA, where he recently finished a term as treasurer on the Board of Directors and is a Distinguished Member of the Academy of Health Information Professionals.

“

**Really enjoyed the plenary closing talks as well as the Janet Doe lecture. Overall a great first-time experience at MLA!**

”



Librarians are essential to high-quality clinical outcomes. Elevate your practice to support health professionals at the point of care, identify information bias to clinicians and patients, expand outreach, manage hospital merger disruptions, and more.

## Immersion Sessions

### **Context Is Everything: Answering the Clinical Question for Nursing Care, Culture, and Research**

This session will present different scenarios from nursing practice and demonstrate how librarians can provide support based on the steps of evidence-based practice (EBP). The session will provide an overview of the steps, illustrating their use in a general hospital setting. Presenters will facilitate the development of a clinical question, using the patient population/disease, intervention or issue of interest, comparison intervention, outcome, time (PICOT) model and then outline an approach to addressing the question, varying by the specific context of the question: point of care, institutional EBP culture, primary research, or systematic reviews.

– Michelle R. Lieggi, AHIP, Claire B. Joseph, AHIP, Marilyn G. Teolis, AHIP, and Kristin M. Chapman, AHIP

### **Envision Yourself in the Electronic Health Record: What You Need to Know to Embed Library Services**

For many years, librarians at MLA have discussed their roles with clinical work flows and the electronic health record (EHR). However, many still do not have access to the EHR, and many hospitals and medical centers still do not offer library services from the EHR or in clinical services. This interactive session will offer participants the opportunity to learn about barriers to library integration into clinical work flows, specifically the EHR, and gain tips for achieving stakeholder buy-in and building clinical informatics integrations through advocacy and learning from others' achievements in this arena.

– Nicole Capdarest-Arest, AHIP, Frances Drone-Silvers, Alison Gehred, Judy H. Hansen, Erica Lake, AHIP, and Shawn Steidinger, AHIP

### **Zebra Questions and Rabbit Holes: Strategies, Tools, and Best Practices for Point-of-Care Searching and Evidence Appraisal**

Literature searching and evidence appraisal at the point-of-care are frequent services for many health care information professionals, so while these specific skills can be difficult for librarians who are new to clinical settings to develop on their own, many other librarians have resources and best practices to share. This session will provide an opportunity for discussion and information sharing between librarians around clinical searching and literature appraisal, helping librarians who provide these services to learn from and with each other while sharing recommended, freely available tools, time-tested strategies, and other best practices for finding and evaluating information for various types of clinical questions.

– Ellen M. Aaronson, AHIP, Sarah Cantrell, Rebecca Carlson, AHIP, Helen-Ann Brown Epstein, AHIP, FMLA, Ellen M. Justice, AHIP, Elizabeth Laera, AHIP, Jennifer A. Lyon, AHIP, Louise McLaughlin, Lisa Liang Philpotts, Tracy C. Shields, AHIP, Emily Shohfi, AHIP, and Sarah Towner Wright

- 3 Immersion Sessions
- 9 Papers
- 1 Continuing Education Course
- Posters and Lightning Talks

## Paper Sessions

### Research Papers

- Moral Distress Related to Ethical Dilemmas among Consumer Health Information Librarians

### Program Description Papers

- Aligning Our Vision with Dental Competencies to Improve Evidence-Based Dentistry Education
- Bringing Vision into Focus: Integrating Information Skills into Nursing Competency Training
- Empowering Culturally Competent Care: How Hospital Librarians Support Cultural and Linguistic Competency at a Major Health Care Institution
- Nurturing a Successful Award-Winning Clinical Librarian Program
- Reducing Patient Care Delays through a Multimodal Patient Literacy Program
- Supporting Dietetic Interns with Evidence-Based Practice (EBP)
- Visible, Valuable, and Validated: Reviving a Safety Net Hospital Library
- What Can We Do about Dr. Google? Utilizing the Electronic Medical Record (EMR) to Prescribe Reliable Online Patient Education

## Continuing Education Course

### Saturday, May 16

#### **CE103 Evidence-Based Practice (EBP) Bootcamp: Prepare to Teach EBP at Your Institution**

This interactive course will give you a solid understanding of evidence-based practice (EBP) and the tools to teach it in a variety of clinical and educational settings.



Librarian educators never stop learning. Develop your skills and knowledge in teaching evidence-based practice (EBP) and supporting active learning at your institution, innovative pedagogies, interprofessional education, and more.

## Immersion Sessions

### **The Future Is Now: Physician Assistant Programs, Practice, and the Library**

There are 238 physician assistant (PA) programs in the United States and over 130,000 practicing PAs. How are medical libraries supporting this rapidly expanding segment of the health care workforce? This session will bring together PAs and librarians to evaluate the current landscape of PA education and clinical support, share best practices, and network. The panelists will cover different aspects of supporting PA programs and practicing PAs.

– Caitlin Meyer, Brandi Tuttle, AHIP, Jolene M. Miller, AHIP, Justine Strand de Oliveira, and Laura Zeigen, AHIP

### **My Favorite Tools**

Join the Technology in Education Caucus for a fast-paced, informative, and most of all, unconventional and fun session. We guarantee it will be unlike any other MLA event you have ever attended. You will discover new tools for teaching, managing time, analyzing data, searching, and handling other tasks you or your patrons may want to accomplish with ease and style. You will also see how you can explain the benefits of specific tools to patrons who may be reluctant to try something new. We encourage you to arrive early or on time, claim a spot with your friends or colleagues, get your device ready, and be an active participant by voting for each contestant.

New for 2020, after giving a three-minute presentation and voting occurs, contestants will participate in moderated discussions by tool league (education and so on). Audience members can listen to the discussions for more information about a specific tool and, if time allows, ask additional questions. Three prizes will be awarded at the end of the session.

## Paper Sessions

### **Research Papers**

- Bad Reputation: Using Three-Dimensional Printed Heart Models to Supplement Cardiac Ultrasound Training for Undergraduate Medical Students
- Best Practices in Teaching Evidence-Based Medicine: An Observational Study of Entrustable Professional Activities (EPA) 7 in Clinical Clerkships
- Conducting a Long-Term Evaluation of Data Workshops: Evaluating the Impact of Three Years of Classes
- Demonstrating Progress in Question Formulation Skills Training among First-Year Medical Students
- EBVM Learning II: Updating an Open-Access Evidence-Based Veterinary Medicine (EVBM) Online Tutorial
- Focusing on Faculty Facilitator Needs for Small Group Case-Based Learning: Where Might Librarians Fit in?
- Impact of a Consumer Health Information Specialization (CHIS) Sponsorship Program on the Capacity of Public Library Staff to Provide Health Information to Their Community
- Integrating Evidence-Based Medicine Skills into a Medical School Curriculum: A Quantitative Outcomes Assessment
- Library Instruction for Graduate Nursing Students: A Scoping Review
- Promoting Health Literacy and Improved Self-Care Management of Incarcerated Populations Using Secure Tablet Technology
- Using Program-Level Curricular Documents to Focus a Medical Science Library's Instructional Vision



- 2 Immersion Sessions
- 30 Papers
- 4 Continuing Education Course
- Posters and Lightning Talks

## Program Descriptions Papers

- The Accidental Academic Library: Meeting the Needs of a Health System–Affiliated University
- Bringing the Medical Library to the Forefront of Data Analysis and Precision Medicine: Strategies and Statistics
- Building on Foundations: A Collaborative Approach to Teaching Evidence-Based Medicine to Veterinary Students
- Building Users' Search Skills for Conducting Systematic Reviews: Development of Self-Directed Learning through the Qualitative Synthesis of Systematic Review Guidelines
- Collaborating with a Health Promotion Class to Assess Library Employee Wellness Needs
- Creating Bright Futures: Preparing Students for Research with a Longitudinal Evidence-Based Dentistry Project
- Developing In-Person Teaching Excellence Workshops through Four Pedagogical Lenses: Cultural Humility, Active Learning, Dealing with Challenges, and Technology
- Focusing on Support: Using an Existing Shared Customer Service Platform to Provide Technical Instruction to Health Sciences Librarians
- From Kitchen Sink to Rigor and Reproducibility: Refocusing a Library Skills Class
- Helping Our Newest Users Focus: Orientation Videos and Materials for Incoming Students
- Increasing Student Engagement Using an *Amazing Race*–Style Competition
- Integrated Library Instruction for a Doctoral (PhD) Program in Health-Related Sciences
- The Library in Focus: Active Orientations for Future Physicians
- The Methodological Maze: Creating a Workshop on the Process of Conducting a Scoping or Systematic Review
- Promoting the Work of Librarians through the Academic Pediatric Association Educational Scholars Program
- Reimagining Long-Standing Physician Associate Research Curriculum Support
- Streamlining Library Classes: Scheduling, Marketing, and Data Gathering in order to Increase the Value of a Library Service
- What Makes a Monster? Innovative Teaching and Outreach to Start a Campus Conversation
- Wicked Workshops: Pulling Back the Curtain on Systematic Review Search Strategy Creation

## Continuing Education Courses

### Friday, May 15

#### **CE101 Supporting Medical Education through Emerging Technologies and Innovation Services**

Learn about the latest, amazing medical technologies, how academic medical libraries are using these technologies, and how you can justify requests for them at your institution.

#### **CE300 Journey to the Outer Limits of Evidence-Based Practice (EBP) Instruction**

Learn how to develop and implement engaging and effective learner-centered approaches to teaching evidence-based practice (EBP) from a group of veteran instructors who have tried all the common approaches and developed new ones.

### Saturday, May 16

#### **CE301 Real World Teaching: Using Teams, Cases, and Critical Pedagogy to Create One-Shot Classes**

Update your teaching approaches to incorporate techniques that are increasingly used by health sciences faculty.

#### **CE302 Move Your Teaching Forward by Designing Your Instruction in Reverse**

Learn how to create presentations that engage your audience and help them remember and use what is important.

Librarians believe that access to health information and health literacy are fundamental to achieving health equity in a global setting. Increase your knowledge and develop your awareness by participating in inspiring MLA '20 sessions on those topics.

## Immersion Session

### **Improving Ourselves and Improving Care: A Hands-On Workshop to Address Unconscious Bias in Health Sciences Literature and Health Sciences Library Systems**

This session will define implicit bias and identify bias with a focus on racial disparities in scholarly health sciences research and help attendees identify implicit bias in health sciences libraries systems and services. The active learning activities will help attendees identify resources to craft research questions and search queries that address implicit bias in health sciences literature and research. The workshop will provide a foundation for information professionals to better serve and address the needs of the diverse communities that their institutions serve.

– Rachel Keiko Stark, AHIP, and Mary-Kate Finnegan, AHIP

## Paper Sessions

### **Research Papers**

- How One Library's Location Change Impacted Health Information Requests: Comparing Zip Codes and Health Disparities to Shape Library Services
- LGBTQ+ Health Research Guides: A Content Analysis

### **Program Description Papers**

- Accessing Evidence-Based Resources and Conducting Systematic Reviews in Resource-Limited Settings
- Partnering with Community-Based Organizations to Provide Health Information Outreach in Public Libraries
- Partnering with the National Library of Medicine to Offer Community Mapping Training

## Continuing Education Courses

### **Saturday, May 16**

#### **CE401 Explore Your Identity to Improve Your Practice: An Introduction to Critical Health Sciences Librarianship**

Health sciences librarians are increasingly called upon to address the intersection of identities and cultures in their institutions. Learn about critical librarianship through an examination of identities.

#### **CE402 Using Cultural Humility to Improve Your Health Sciences Librarianship**

Learn how to use the tool of cultural humility to develop and implement diverse, inclusive, and equitable strategies that improve your instruction and your workplace.

- 1 Immersion Sessions
- 5 Papers
- 2 Continuing Education Course
- Posters and Lightning Talks

# ~~5~~ NOW 6!

## Ways to Earn CE

01

### LIVE WEBINARS

- Includes live webinar and access to the webinar recording
- Earn 1.5 MLA CE hours

02

### RECORDED WEBINARS

- Archived MLA webinars are available for on-demand viewing to members and nonmembers alike
- Earn 1.5 MLA CE hours

03

### SELF-PACED COURSES

- Engaging courses with real-world scenarios
- Acquire job and career-related skills
- Earn 1.5 MLA CE hours

04

### MLA LIVE MEETINGS

- MLA annual meeting
- Select chapter and section meetings
- Earn MLA CE hours

Register, participate,  
and earn MLA  
continuing education  
(CE) hours. It's that easy!

05

### DISCUSSION GROUPS

- Explore a topic of interest with other professionals; meet in person or hold discussions online
- Earn up to 8 MLA CE hours

06

### INDEPENDENT READING PROGRAM

- Read preselected articles in the *Journal of the Medical Library Association*, self-selected professional journal articles, and books
- Receive 1 MLA CE hour for every article completed and 5 MLA CE hours for every book read

MLA offers many professional development opportunities to meet your needs as an information professional.

There are a variety of formats to meet the needs of all learners. Here are the six options.



MLA '20 offers powerful and fun opportunities to develop your information management skills and knowledge. Heighten your performance in open access, data sharing, data repositories, data management, and more.

## Immersion Sessions

### **Collection Management in the Age of Hospital Mergers**

This session builds on a previous successful session on hospital mergers by focusing on the pressing issue of collection management in hospitals and academic settings that are involved in institutional mergers. Presenters will address collection management policies, finances, licensing, work with vendors, and navigation of tricky access issues and site-specific collections, as well as experiences from the academic side. Participants are encouraged to bring their own experiences and share advice, pitfalls, and pearls with the room.

– Elizabeth Laera, AHIP, Aidy Weeks, AHIP, Heather J. Martin, AHIP, Jean Gudenas, AHIP, and Angela Spencer, AHIP

### **Concentric Conversations: A Data Curation and Reuse Unconference**

As more libraries provide services covering more of the research data life cycle, an increasing number of checklists, toolkits, and resources abound for the process of assessing data quality for curation and for reuse. Therefore, the aim of this session is to bring people of various experiences together to find new or common ground around best practices for assessing data quality and engaging in data curation. This unconference will allow ideas and practices to be shared where librarians are providing these services, working as data researchers, or engaged in related areas and can provide input on how they are incorporating these tools, while the informal nature of the unconference will allow varied levels of participation, from listening and asking questions to sharing practices and presenting briefly.

– Peace Ossom Williamson, AHIP, and Virginia (Ginny) Pannabecker, AHIP

### **The FAIRest of Them All: Using the FAIR Data Principles to Evaluate Open Data Repositories**

Come to this interactive workshop to learn how to apply FAIR data principles: findability (F), accessibility (A), interoperability (I), and reusability (R). Participants will share their approaches and work together using guiding questions to find and assess a data repository and reflect on using FAIR principles to support open data sharing in their work settings. As funders and publishers are increasingly encouraging and requiring researchers to publish their data, librarians have stepped in to provide expertise in choosing where and how to best prepare, deposit, and publish data sets. This session will provide a pathway for librarians to identify and critically appraise existing data repositories in accordance with the FAIR principles in order to provide guidance on where to deposit data and how to make data meet quality standards upon publication.

– Peace Ossom Williamson, AHIP, and Virginia (Ginny) Pannabecker, AHIP

### **Part II: Revisioning Data Visualization Services and Training: Data Storytelling and Data Visualization Lessons from the Field**

This session is a continuation of MLA '19's immersion session, "Part I: Establishing a Successful Data Visualization Service: Data Visualization Lessons from the Field." Learn best practices for data visualization and data storytelling with the health librarian in mind. The panel will reflect on their experiences developing data visualization services in the library, training different user groups, and revisioning the role of librarians in data visualization.

Data visualization is an emerging service in health sciences libraries, and this session will appeal to librarians who are interested in gaining data visualization skills and the tools to set up a basic data visualization service or data visualization training at their respective institutions.

– Nancy Shin, Fred Willie Zametkin LaPolla, Catherine Tess Grynoch, and Sally Gore

- 5 Immersion Sessions
- 6 Papers
- 3 Continuing Education Course
- Posters and Lightning Talks

### **Scholarly Communications in Focus: Supporting Your Authors**

This session will present the current issues in scholarly communications that include supporting authors with open access publishing models, identifying and addressing issues related to predatory publishers and conferences, and creating and maintaining an online research identity. During the unconference section, participants will decide the topics, and presenters will facilitate discussions via roundtables.

– Shirley Zhao, Mary Shultz, Sandy De Groote, AHIP, and Karen Gutzman

## **Paper Sessions**

### **Research Paper**

- Identifying Barriers to Citing Retracted Literature

### **Program Description Papers**

- Assessing Human Subjects Data Sets for Ingestion into an Institutional Repository
- Biomedical Reproducibility Workshop Series
- Kickstarting Use of Electronic Lab Notebooks at an Academic Medical School
- Managing Researcher Expectations and Promoting Buy-In in a Health System Institutional Repository
- Open Educational Resource Produces Licensed Resources to Sustain Project

## **Continuing Education Courses**

### **Friday, May 15**

#### **CE200 Archiving for Non-Archivists**

Learn the essentials of archiving, in an afternoon. You will get grounded in basic archival history and theory and learn the essentials of archiving.

#### **CE500 Charting a New Course: Practical Data Visualization for Librarians**

Learn how to chart (and graph!) information that engages with and communicates to your audiences.

#### **CE501 An Introduction to Using Computer Software for Qualitative Data Analysis**

Learn how to analyze interview, focus group, and other qualitative data using low-cost and free software. If you are ready to add a new tool to your research repertoire, join us on this adventure!



Librarians have an inexhaustible interest in improving their information services skills and knowledge! Boost your performance with the latest in systematic reviews, searching, data visualization, artificial intelligence, and more.

## Immersion Sessions

### **Collaborating with Nonlibrarians: Enriching Your Teaching, Research, and Engagement**

It is widely held that solving complex problems is done best by diverse teams that include experts from different social and disciplinary backgrounds. Bringing together an interdisciplinary team can expose the collaborators to new ideas, perspectives, or approaches they may not have considered before. Librarians can bring to the table a range of skills and expertise (e.g., access to information, sophisticated search strategies, organization of information, information literacy, the user experience, bibliometrics, research data management, instructional design). Come learn how the interdisciplinary playing field is a space where librarians can collaborate with nonlibrarians in many ways.

– Jane Kinkus Yacilla, Katherine Gould Akers, Lindsay E. Blake, AHIP, Jonathan Eldredge, AHIP, Kelly Johnson, Hanna Schilperoort, Lorraine Toews, Jennifer A. Lyon, AHIP, and Natalie Tagge

### **Focusing on Health Sciences and Public Library Collaborations for All of Us**

Recognizing the important role that public libraries play in the health and wellness of their communities, National Network of Libraries of Medicine (NNLM) funding has enabled academic health sciences and public librarians across the country to make precision medicine and health literacy primary components of their institutional programming. Four librarians will share stories of collaboration with multiple community stakeholders to lead their communities to quality health information, while raising awareness of the All of Us program. Using their successes and challenges, presenters will share tips, techniques, and resources to develop similar community engagement strategies for health outreach endeavors.

– Darlene Kaskie, Rachel Tims, Debra Werner, Lynda J. Hartel, Dana Wilkosz, and Katherine Spotswood

### **Seeing Things Differently: Evolution, Assessment, and Future Roles of Liaison Librarians**

This session aims to further the conversation about the evolving nature of liaison roles and duties. Through activities, attendees will explore differences in liaison roles and examine the evolution of the liaison librarian in health sciences libraries. Facilitated activities provide an opportunity to brainstorm and discuss what is next for the role of the liaison librarian. Attendees will share information about ways to assess liaison duties and gain insights that further develop their familiarity with functional support models and other methods to support library users.

– Emily J. Hurst, AHIP, Natalie Clairoux, Hannah Friggle Norton, John W. Cyrus, and Michelle Cawley

### **Transforming Open Access (OA): How We Did It and Are Doing It**

Join a panel discussion with stakeholders providing a multicampus system's, a dean's, and a line librarian's perspective on what it takes to do consortia agreements for transformative open access change. The panel will lay the foundation for librarians at a variety of institutions to share how their individual and collective work can help plant the seeds for change in publishing. The focus of the discussion of practical approaches will be around building collections in the health sciences, advocating for open access (OA) policies at an institutional level, and creating

a cultural of awareness of scholarly communication issues at your institution. – *Rice Majors, Chris Shaffer, AHIP, Sarah McClung, and Rikke Sarah Ogawa, AHIP*

- 4 Immersion Sessions
- 16 Papers
- 4 Continuing Education Course
- Posters and Lightning Talks

## Paper Sessions

### Research Papers

- An Analysis of Local Systematic Reviews: A Mixed Methods Study
- It's Worse than You Think: Significant Search Function Unreliability in the Major Medical Databases
- Seeing Our Open Access (OA) options: A Comparison of Full Text Finders
- Understanding the Health Information Practices of LGBTQ+ Communities to Improve Medical Librarian Services
- The Veterinary Information Infrastructure Revisited: Facilitating the Openness, Reproducibility, and Synthesis of Veterinary Research
- Virtual Focus Groups: Bringing Public Library Workers Together for Consumer Health

### Program Description Papers

- BioData Club: A Partnership Model for Advancing Data Literacy
- Designing and Delivering a Program for Staff Professional Development in an Academic Biomedical Library
- Empowering Community Health Workers to Provide Health Information to Hispanic Community Members
- EndNote Comes to Campus: Lessons Learned from Supporting an EndNote Site License on an Academic Medical Campus
- Focus on Outreach: A Pop-Up Library Commemorating Florence Nightingale's 200th Anniversary in 2020
- Focusing on Improvement: Development and Roll Out of Reference Interactions, Research Consultations, Searching Services, and Library Classes Assessments
- National Health Observances: Content to Promote Health Information Resources and the All of Us Research Program
- One Website to Rule Them All: Lessons Learned from a Series of Reorganizations, Integrations, and Creation of One University Libraries' Website from Three
- ORCID for Researchers: Librarians' Role in Implementing and Supporting ORCID
- Technology-Assisted Systematic Reviewing: Collaboration and Experiences of Health Sciences Librarians from Multi-Institutions

## Continuing Education Courses

### Friday, May 15

#### **CE 100 Advanced Search Strategy Design: Search Filters, Text Mining, and Peer Review**

Learn how to use methodological search filters to identify specific study designs, use text mining tools for strategy design, employ peer review of your search strategies, and more.

### Saturday, May 16

#### **CE 102 Effectiveness and Efficiency in Exhaustive Searches**

Learn a new, efficient, and effective method for conducting exhaustive searches!

#### **CE 104 Advanced Search Techniques: Identifying Terms, Conceptual Breakdowns (Beyond PICO), Tips, Pitfalls, and Resources**

Learn how to identify resources that are appropriate for a review question, search beyond MEDLINE/PubMed with a focus on Embase, search for citations, and avoid common and not so common pitfalls.

#### **CE 105 Teaching Users about Grey Literature and How to Search for It**

Learn how to help end users find the grey literature that is most essential and relevant to their questions.

Librarians are at the cutting edge of innovation and research. Expand your knowledge and practice with the latest developments in a broad range of high-impact research studies and techniques.

## Immersion Sessions

### **Focusing on the Future of Health Policy: Exploring Policy Creation and Analysis through the Lens of Best Evidence**

Through a focus on climate policy, one of the American Public Health Association's (APHA's) 2019 advocacy priorities, this session will provide insights into the information needed for evaluating and creating policies. A researcher and a policy maker from the state capital will provide insights into how evidence is used to create and change policy, and the roles information professionals can play in this process. This interactive session will allow participants to work through a series of case studies such as being asked by researchers for information to evaluate a climate change policy or finding research that meets HONEST Act requirements. These scenarios will help participants work through both researcher and policy maker perspectives.

– *Chris Koski, Michael Dembrow, and Meredith Connolly*

### **Mobilizing Librarian Engagement with Computable Biomedical Knowledge: Our Roles in Curation, Stewardship, Dissemination, and Advocacy for Equity**

Recognizing the expertise of librarians in information organization, description, and dissemination, session organizers seek to increase library and librarian engagement in a new community (Mobilizing Computable Biomedical Knowledge [MCBK]), through presenting an overview of the community, sharing work to date at their institutions, and engaging attendees in the efforts of MCBK community work groups.

– *Marisa Conte, AHIP, Gerald J. Perry, AHIP, FMLA, Rachel Richesson, Chris Shaffer, AHIP, Philip Walker, and Terrie R. Wheeler*

### **Roles for Librarians in Research Impact Services**

Demand for research impact services at medical libraries is growing, but guidelines and best practices for providing these services are scarce. In this session, presenters reflect on the ways that research impact services have been implemented at their and other organizations and, based on those experiences, offer a preliminary set of roles that medical librarians can fill in providing these services. Through a series of guided discussions with the audience, they will introduce and refine both the roles themselves and the knowledge and skills necessary to perform each role. By the end of the session, participants will have a better understanding of the different forms that research impact services can take in medical libraries and how those services can be implemented at their own institutions.

– *Christopher William Belter, Karen Gutzman, Tyler Nix, and Amy Suiter*

### **You Can Do It: Developing Your Research Identity within Health Sciences Librarianship**

The organizers' goal is to convene an immersion session that will facilitate a conversation among members of MLA who are interested in increasing their involvement in research activities. To accomplish this, we have recruited a small panel of three health sciences librarians who are actively engaged in research. These librarians represent different stages in terms of career and research accomplishments (early career, mid-career, senior), reflect the diversity of MLA's membership, and have experience working in a variety of health sciences library settings. Topics



- 4 Immersion Sessions
- 21 Papers
- 2 Continuing Education Course
- Posters and Lightning Talks

discussed by the panel will include “Developing a Research Agenda,” “Research Methods and Study Designs,” and “Creating Space for Research as a Practicing Librarian.”

– Ayaba Logan, Laura Menard, Lisa A. Marks, AHIP, and Alexander J. Carroll, AHIP

## Paper Sessions

### Research Papers

- Addressing Disparities in Physician Access to Information in Support of Evidence-Based Practice
- Artificial Intelligence in Systematic Reviews: How Does DistillerSR Compare to Traditional Screening Methods?
- Assessing the Impact of Consultations with Librarians on Faculty Research
- Assessing the Impact of Programming Workshops on Biomedical Research Reproducibility
- Best. Library. Ever.?: Identifying Library-Climate Enhancement Opportunities through a Multiphase Diversity, Equity, and Inclusion Needs Assessment Project
- Examining Open Access Article Performance: Taking a Nearsighted Approach to a Farsighted Problem
- Flawed Research in Focus: Retracted Publications in Pharmacy Systematic Reviews
- Grey Literature Inclusion in Nursing Systematic Reviews: A Bibliometric Analysis
- Is the Open Access Citation Advantage Real? A Systematic Review
- Making Space: A Quantitative Vision for the Future of Library Space Planning
- Testing a Random Item Screening Approach to Constructing Search Validation Sets
- Text Mining for Diverse Review Topics: A Prospective Study Comparing Search Strategies Developed with and without Text Mining Tools
- Understanding Participant Motivation and Rates of Attrition in Biomedical Datathons and Hackathons
- Using Free Text Mining Software to Analyze Chat Reference Transcripts: A Pilot Study

### Program Description Papers

- Assessing and Prioritizing the Future of Health Sciences Library Services in Times of Change
- Evaluation of the Impact of National Library of Medicine (NLM) Associate Fellows’ Projects: 1992–2012
- Finding (the Right) Data: Helping Students Think Critically about Data Reuse
- For the Health of the New Nation: Creating an Online Portal for the History of Medical Education
- Research Training Institute (RTI) Assessment Results Two Years After: Building a Research Support System for Health Sciences Librarian-Researchers
- Setting Your Sights on an Interprofessional Library Team? Make Way for a Health Library Informaticist!
- Teaching Data Science Skills with JupyterHub

## Continuing Education Courses

### Saturday, May 16

#### CE 502: Evaluating Research in the Health Sciences Literature

Learn the skills you need to evaluate research and assess quantitative and qualitative studies on their own merits.

#### CE 503 Survey Insights: Advanced Survey Techniques

Deepen your knowledge of effective survey design and gain skills in advanced survey techniques.

Broaden your leadership in project planning, grant funding, diversity, ethics, communication, new librarian roles, advocacy, and more.

## Immersion Sessions

### **Envisioning Diverse and Inclusive Library Programming and Outreach**

The objective of this session will be to provide practical examples of programming, outreach, instruction, and education that librarians are actively doing to educate both librarians and the larger community on issues related to diversity, equity, inclusion, and accessibility. Attendees will also gain a better understanding of these concepts.

– Shannon D. Jones, AHIP, Kelsa Bartley, JJ Pionke, and Hector R. Perez-Gilbe, AHIP

### **Inclusive Imagining: Encouraging and Capturing Diverse Perspectives to Create an Inspiring, Actionable Strategic Plan**

Join in an interactive discussion where a panel will share how they wrestled with and ultimately answered important questions about strategic planning that you may also face.

- What makes a strategic plan useful, rather than a forgotten artifact of a mind-numbing wordsmithing exercise?
- Do we really need to include everyone in the library in creating the strategic plan?
- What if we cannot include all the ideas of the participants?
- Could we actually enjoy ourselves in the process of creating a strategic plan?

– John C. Bramble, Elizabeth Frakes, AHIP, Heidi Greenberg, Joan Marcotte Gregory, AHIP, Melanie Hawks, Christy Jarvis, AHIP, Nancy Lombardo, Brandon Patterson, Nena Schvaneveldt, AHIP, Shawn Steidinger, AHIP, George G. Strawley, and Catherine Soehner

### **Legislative Update: Advocate for Medical Libraries with MLA! Getting Ready for Capitol Hill Day at MLA '21**

Did you know that the MLA annual meeting next year will give you the chance to meet with your congressional representatives on Capitol Hill to talk about the value of medical libraries and trustworthy, accessible health information? Join this session to learn about legislation that impacts MLA members, and participate in a conversation about how to engage with your local, state, and national representatives about issues related to medical librarianship and health information.

– Margaret Emily Ansell, AHIP, Sandra L. Bandy, AHIP, Mary M. Langman, Dina Nicole Paltoo, and Chris Shaffer, AHIP

### **Safe Zone Training: LGBTQIA+ Cultural Competency for Now and the Future**

Explore LGBTQIA+ inclusive language and practices, which, in turn, will help you to identify how MLA and our home institutions can continue to be more safe and inclusive spaces for our LGBTQIA+ colleagues, coworkers, patrons, and users. This session will cover LGBTQIA+ inclusive and affirming terminology, differences between gender and sexuality, and privileges and barriers specifically around gender and sexuality but also in connection to race, class, ability, religion, and other marginalized identities. We will tackle commonly asked and misunderstood questions, work through real-life

- 4 Immersion Sessions
- 18 Papers
- 1 Continuing Education Course
- Posters and Lightning Talks

scenarios, and identify resources for further learning. The facilitators will walk attendees through a carefully planned exploration of LGBTQIA+ identities, terminology, and more via active learning activities, discussion, and reflection.

– Hannah Schilperoort, Meredith I. Solomon, AHIP, Mary Catherine Lockmiller, AHIP, Jane Morgan-Daniel, AHIP, Jacqueline Leskovec (she/her), Brenda M. Linares, AHIP (she/her), and Brandi Tuttle, AHIP (she/her)

## Paper Sessions

### Research Papers

- An Analysis of the Training Needs of the Profession Regarding Accessibility and Disability
- Arts, Humanities, and Social Sciences in Developing in Undergraduate Medical Education: A Scoping Review
- Attitudinal Attributes of Professionalism in Health Sciences Librarians
- A Comparison of Health Sciences Librarianship Job Qualifications and MLA's *Competencies for Lifelong Learning and Professional Success*
- Leaders' Ways of Knowing about Leadership
- Understanding Library Student Perspectives on Gaining Impactful, Career-Building Professional Experiences

### Program Description Papers

- Breaking the Silence: Hosting Awareness Events on Campus during Crisis
- Building a Workforce for Data-Driven Research and Health: The National Library of Medicine Data Science Training Program
- Defining Graduate Medical Education (GME) Librarianship: Creating and Developing a New GME Library Program
- Developing a Culture of Inclusivity through the Formation of a Library Diversity and Inclusion Team
- Envisioning Success: Breaking Down Silos to Engage throughout the Library and Grow Institutional Impact
- Implementing a Requirement for All Library Staff to Complete Professional Development Related to Diversity and Inclusion
- Increasing Library and Librarian Visibility through a Semi-Custom E-Newsletter
- One Library's Focus on Organizational Health Literacy
- Perfecting Best Practices to Address Future Challenges in a Geographically Dispersed Hospital Library System
- Using a Critical Librarianship Framework with Medical Library Institutional Repositories: Tactics and Outreach
- Vision for the Future: A Hospital Library Partnership to Develop Diversity and Inclusion Programming
- A Vision toward Healing: One Library's Response to a Mass Shooting

## Continuing Education Course

**Friday, May 15**

### **CE 400 Do You Want to Be a Library Director? Knowledge, Skills, and Career Paths**

Learn what makes a great leader and library director and if library directorship right for you.

## Oregon Convention Center | Portland, OR

### Exhibitors (as of December 13, 2019)

- American Academy of Pediatrics
- American Association for the Advancement of Science (AAAS)/*Science*
- American Chemical Society (ACS) Publications
- American College of Physicians
- **American Pharmacists Association (APhA)**
- American Physiological Society
- American Psychological Association
- American Society of Hematology
- Anatomage
- Annual Reviews
- Bioscientifica
- BMJ
- CABI
- Covidence
- CyberTools for Libraries
- Doody Enterprises
- Draw It to Know It, Medical & Biological Sciences
- EBSCO Health
- Elsevier
- **Elsevier ClinicalKey**
- Evidence Partners
- Future Science Group
- HARRASSOWITZ
- Health Care Compliance Association (HCCA)
- Impelsys
- IOS Press
- Isabel Healthcare
- **JAMA Network**
- JoVE
- Karger Publishers
- LibLynx
- LM Information Delivery
- Mark Allen Group
- Mary Ann Liebert, Inc. Publishers
- Matthews Medical & Scientific Books
- **McGraw-Hill**
- The Medical Letter
- **NEJM Group**
- Oxford University Press
- People's Medical Publishing House (PMPH) USA
- Prenax
- Primal Pictures
- ProQuest
- Radiological Society of North America (RSNA)
- RedacTek
- Rittenhouse Book Distributors
- Rowman & Littlefield
- SAGE Publishing
- **Springer Nature**
- TDNet
- TDS Health
- Thieme Publishers
- Third Iron
- VisualDx
- Wiley
- WIRB-Copernicus Group (WCG): FDAnews/CenterWatch
- **Wolters Kluwer**
- WT Cox Information Services

**Companies in bold denote MLA '20 sponsors.**

For information on exhibiting, visit [www.mlanet.org/mla20](http://www.mlanet.org/mla20) or contact Sabrina Sheth, MLA, at 703.442.2079; [sheth@mail.mlahq.org](mailto:sheth@mail.mlahq.org).



## Exhibit hours

Saturday, May 16, 2020: 5:00 p.m.–7:30 p.m.,  
*Welcome Reception and Opening of the Hall of Exhibits*  
Sunday, May 17, 2020: 10:30 a.m.–5:00 p.m.  
Monday, May 18, 2020: 9:00 a.m.–5:00 p.m.

## Technology Showcases

A theater-style setting for exhibitor presentations of their latest technologies, these sessions are an opportunity for attendees to get a first look at new technology.

## Sunrise Seminars

Sunrise Seminars are designed for an intensive overview of a topic and for attendees to learn about the latest vendor offerings.

## Lunch & Learns

Lunch & Learns are a great way to foster community and continuous learning. These educational sessions plus lunch are sponsored by exhibitors.

For more information about the Technology Showcases, Sunrise Seminars, and Lunch & Learns being offered at MLA '20, or if you would like to complete an application please, contact Sabrina Sheth at [sheth@mail.mlahq.org](mailto:sheth@mail.mlahq.org). Deadline for applications to be submitted by is January 31, 2020.



**What I liked most about our participation at the MLA annual meeting was the relationships our sales reps get to build with prospective and current customers.**



## Platinum

---



## Gold

---



## Silver

---



## Bronze

---





# PROFESSIONAL INTERACTIONS

To join MLA is to become a member of a community, a place to belong, where like-minded people share knowledge and work together toward goals they could not achieve alone; where thought leaders, health information professionals, excellent education, exhibits, and networking come together for you to learn new information and create new connections.

MLA's mission is to promote advancement, communication, and lifelong learning. We serve as a connecting point for health information professionals to meet and exchange ideas. MLA '20 offers a variety of activities and programs to benefit members.

## SATURDAY, MAY 16

**4:15 p.m.–4:45 p.m.**

### Leaders' Recognition and International Attendee Reception

*Sponsored by NEJM Group*

Incoming and outgoing chairs or presidents of caucuses, chapters, committees, domain hubs, juries, and task forces as well as appointed officials, allied representatives, international visitors, and those with an interest in international relations are invited to connect with colleagues at this appreciation reception prior to the opening of the Hall of Exhibits.

**5:00 p.m.–7:30 p.m.**

### Welcome Reception and Opening of the Hall of Exhibits

*Sponsored by NEJM Group*

Free to all MLA '20 registrants! Mingle with colleagues and exhibitors on the exhibit hall show floor while enjoying refreshments, live entertainment, and fun activities.

### Colleague Connection

Colleague Connection pairs first-time attendees with members who are experienced with the MLA meeting or (new this year) new attendees can opt to be paired with a fellow newbie buddy. If this is your first MLA meeting or if you would like to help a newer member maneuver the meeting, watch the MLA '20 site or *MLAConnect* for information on signing up! Questions? Contact Kate Corcoran at [corcoran@mail.mlahq.org](mailto:corcoran@mail.mlahq.org).

## SUNDAY, MAY 17

**7:00 a.m.–8:55 a.m.**

### New Members/First-Time Attendees Program and Breakfast

*Sponsored by Wolters Kluwer*

Are you a new MLA member or an MLA member attending your first MLA annual meeting? Please join us to get advice and tips on

navigating the meeting and MLA! To receive an invitation to the event, please identify yourself as a new member when you register. Invitations will be emailed about four weeks before the meeting. You must RSVP to gain admittance.

**7:30 a.m.–8:30 a.m.**

### Sunrise Yoga

Get ready physically and mentally for an invigorating and stimulating MLA '20. Instructors will lead participants in active stretching, familiar postures, and thoughtful meditation accompanied by music. Intended for all levels of yoga experience, this free event is open to all. Wear comfortable clothes and bring a towel or your yoga mat.

**9:00 a.m.–10:20 a.m.**

### Welcome, Awards, and Presidential Address

2019 MLA President Julia Esparza, AHIP, will spotlight the amazing changes that have occurred in the structure of the organization and highlight the many accomplishments of the members of MLA who make up the success of the organization.

### Library School Reunion

Open to library school alumni. No registration required. The date and time for the Library School Reunion will be published in the online itinerary planner opening in February 2020.

## MONDAY, MAY 18

**9:00 a.m.–10:20 a.m.**

### Open Forum

Open Forum: An unmoderated public forum will provide open discussion among health information professionals, where MLA will share its vision for the future.

**3:30 p.m.–4:50 p.m.**

### MLA Business Meeting, Awards, and Presidential Inaugural Address

2020 MLA President Lisa K. Traditi, AHIP, Traditi will share MLA's vision and plan for 2020/21 and the personal journey that led her to this day.

## Living Library

The Diversity and Inclusion Task Force will host a Living Library at MLA '20! What exactly is a "Living Library," and why would I want to attend, you ask? The Living Library is an event comprising "books," and each of those books is a person who has a lived experience that often is met with stereotypes, prejudices, and misunderstandings. Have you ever wanted to ask someone who is different from you questions but have been too shy to ask or not even known how to ask the question? This is the event for you. Each book will share their introduction to their experience, and readers are then able to ask the book questions they are curious about without judgment. This is an interactive and often very enlightening experience, with both readers and the books themselves coming away with much more than expected. This is a chance to talk about topics we may not understand very well through those who have experienced them. Let's get the conversation started! The date and time for the Living Library will be published in the online itinerary planner opening in February 2020.

## TUESDAY, MAY 19

**9:00 a.m.–9:55 a.m.**

### NLM Update

NLM will present an update that highlights available resources, consumer health news, and accompanying information from MedlinePlus.

### Legislative Update

Join MLA's Governmental Relations Committee for an overview of health funding and other timely issues and legislation. During this session, the committee will discuss how members can start preparing for MLA's Capitol Hill Day that will take place during MLA '21. The date and time for the Legislative Update will be published in the online itinerary planner opening in February 2020.

### Academy of Health Information Professionals Q&A Session

If you have questions about the requirements or the process involved in applying for the academy, join the MLA Credentialing Committee for a general overview of the program, followed by a question-and-answer session. The date and time for the Academy of Health Information Professionals Q&A Session will be published in the online itinerary planner opening in February 2020.

### Building Research Capacity for the Future: MLA Research Training Institute Session

The 2019 MLA Research Institute (RTI) faculty and fellows will share their research experiences and discuss challenges of conducting successful research projects in the real world. The session features thirty-second "ignite" talks by the RTI Fellows about their research projects and opportunities to talk to experts and peers about research learning opportunities and connect with research colleagues. The date and time for the RTI session will be published in the online itinerary planner opening in February 2020.

**Awards and Recognition:** MLA awards and recognitions will be presented during plenary sessions on Sunday and Tuesday mornings when all meeting attendees can honor their colleagues for their distinguished service to MLA and to health sciences librarianship.

**Unit Meetings:** These one-to-two-hour meetings are intended for committees and other affiliated groups to convene and are an effective means for professionals to pool their collective knowledge. All are welcome. Members and guests meet for member-led discussions of committee and group activities.

**Placement Center:** The onsite Placement Center at MLA '20 serves as the home base for attendees looking for their next positions and employers seeking new hires. Career consultants provide career-focused advice and one-on-one resume counseling.

**Academy of Health Information Professionals (AHIP):** Academy membership demonstrates that you have met standards of education, experience, and accomplishment in the health information profession. Considering academy membership? Attend the Academy Q&A session to learn about the credentialing program and application process or stop by the MLA Connections Booth to speak with an academy expert to get your questions answered.

**Experience Targeted Library Exhibitors:** Expert vendors will showcase new and favorite library products, services, books, online services, tools, and technologies.

MLA's Career Planning Center provides a group of services for members seeking long- or short-term career planning. Whether you recently entered the profession or are considering a job change, your colleagues in the Career Planning Center can help you make informed career decisions.

## Shape Your Individual Professional Development Plan

Experienced MLA members will help you:

- perform a self-assessment of your professional goals
- understand the expertise needed to achieve your professional goals
- perform a self-assessment of your professional competencies using the MLA framework
- perform a gap analysis of your current versus needed expertise
- produce your individualized professional development plan
- navigate MEDLIB-ED and find relevant courses to make progress on your professional development plan

## Job Placement Center

Advertise your open positions—or find your next job—through MLA's onsite Job Placement Center! Register using forms available at [www.mlanet.org/mla20](http://www.mlanet.org/mla20), or contact Tomi Gunn, [gunn@mail.mlahq.org](mailto:gunn@mail.mlahq.org). Return your forms by May 4, 2020, to have your resume or job posted at the start of the meeting; onsite registration is also available.

## Hours

Saturday, May 16, 10:00 a.m.–2:00 p.m.  
Sunday, May 17, 10:30 a.m.–5:00 p.m.  
Monday, May 18, 10:00 a.m.–5:00 p.m.  
Tuesday, May 19, 10:00 a.m.–2:00 p.m.

## MLA Resume Clinic

Sign up to have an MLA expert volunteer review your cover letter, resume, or CV, or even conduct a mock interview with you. Participants will have up to 30 minutes with a reviewer, who will offer tips for improving your resume or CV, or will help you with an upcoming interview. The Resume Clinic is available during Job Placement Center hours on Saturday, May 16, Sunday, May 17, and Monday, May 18. Watch *MLAConnect* and MLANET for sign-up information; registrants will receive additional information in advance of the meeting.

## MLA Academy Applicants

Stop by the booth in the registration area to learn more about the Academy of Health Information Professionals. Academy experts will be staffing the booth, ready to answer your questions about the program. For an extended one-on-one session with a reviewer, please contact Tomi Gunn at [gunn@mail.mlahq.org](mailto:gunn@mail.mlahq.org) to set up a time to meet.



# SUPPORTING EVERY STEP FROM BENCH TO BEDSIDE

Discover the Nature-branded clinical and medical journals

Nature-branded clinical and medical journals support researchers at every step of the way. Whether discovering new drugs, researching the most effective advances in the healthcare industry or clear insights into the latest, most effective procedures in the field, this group of journals can help.



Add these journals to your library today:

## Drug Discovery



## Clinical Trials



## Patient Care



nature cancer



## New from Nature Research: Nature Cancer

Nature Cancer publishes the most significant advances across the full spectrum of the natural, applied and social sciences, from basic preclinical to translational and clinical work.

# CONTINUING EDUCATION COURSES

## Registration and Fees

Registration is handled on a first-come, first-served basis, and no waiting lists are maintained. You may select first- and second-choice continuing education (CE) courses on the registration form. Fees are based on first-choice selections. You do not have to register for the meeting to register for MLA '20 courses. Room assignments will be listed in the *Official Program*. Some instructors have established a maximum attendance size, so register online now or send in the registration form on page 42 today.

- Student fee, pending available space: \$50
- Cancellation or course change fee: \$50 per course (see page 41 for refund policy and deadlines)

Participant handouts for CE courses will be made available electronically. MLA will send out a confirmation prior to the CE course with information on how to access handouts for specific courses.

## Professional Competencies

Courses are organized in tracks according to the professional competency areas described in the *MLA Competencies for Lifelong Learning and Professional Success* ([www.mlanet.org/competencies](http://www.mlanet.org/competencies)).

- 100s** Information Services
- 200s** Information Management
- 300s** Instruction & Instructional Design
- 400s** Leadership & Management
- 500s** Evidence-Based Practice & Research
- 600s** Health Information Professionalism

## Special Course Suites



### Data Management

These courses provide the latest information and resources in the field of data management.



### Diversity and Inclusion

These courses provide ideas to develop and implement diverse and inclusive strategies to improve your workplace.



### Evidenced-Based Practice

These courses emphasize the librarian's role in the practice of evidence-based health care.



### Expert Searching

These courses emphasize librarians' roles as expert searchers in health care and biomedical research.



### Management

These courses address topics relevant to library administration for current managers and individuals interested in management.



### Bring Your Own Device

These courses require attendees to bring a laptop computer or other device with WiFi capability to participate in interactive activities.



### Hands-on Computer Courses

All hands-on computer courses will be held at an offsite facility in Portland, OR, where computers will be provided, and not at the Oregon Convention Center. The facility will be named in the *Official Program*. Transportation from the hotel to the facility will be provided, if necessary. Hands-on courses are marked as part of the course description with the hand icon.



## FRIDAY, MAY 15

10:00 a.m.–5:00 p.m.



### **CE100 Advanced Search Strategy Design: Search Filters, Text Mining, and Peer Review**

**Cost:** \$400 (nonmember: \$700)

**Attendance maximum:** 25

In this advanced course in searching to support systematic reviews and other major projects, you will learn how to use methodological search filters to identify specific study designs, use text mining tools for strategy design, employ peer review of your search strategies, and more.

**Instructors:** Julie Glanville, MCLIP, Associate Director, York Health Economics Consortium, University of York, York, United Kingdom, and Carol Lefebvre, HonFCLIP, Independent Information Consultant, Lefebvre Associates, Oxford, United Kingdom



### **CE400 Do You Want to Be a Library Director? Knowledge, Skills, and Career Paths**

**Cost:** \$320 (nonmember: \$570)

**Attendance maximum:** 15

This course is designed to inform, inspire, and, perhaps, even change the minds of MLA members who aspire to become academic health sciences library directors. The core topics are: What makes a great leader? What does a library director do? What are the hot topics in academic medicine and how do they affect a library? Is a library directorship right for you?

**Instructors:** Heidi Heilemann, AHIP, Associate Dean and Knowledge Management Director, Lane Medical Library and Knowledge Management Center, Stanford University, Stanford, CA; M.J. Tooley, AHIP, FMLA, Associate Vice President, Academic Affairs, and Executive Director, Health Sciences and Human Services Library, University of Maryland–Baltimore; and Gabriel Rios, Director, Ruth Lilly Medical Library, Indiana University School of Medicine–Indianapolis



### **CE500 Charting a New Course: Practical Data Visualization for Librarians**

**Cost:** \$320 (nonmember: \$570)

**Attendance maximum:** 25

Learn how to chart (and graph!) information that engages with and communicates to your audiences. Through a series of hands-on activities, you will gain practical and immediately useful skills in creating attractive and informative visualizations of qualitative and quantitative data using Microsoft Excel.

*\*Note: Attendees are required to bring a laptop computer or other device with WiFi capability to participate in interactive activities.*

**Instructors:** Karen Gutzman, Head, Research Assessment and Communications, Galter Health Sciences Library & Learning Center, Feinberg School of Medicine, Northwestern University, Chicago, IL; Candace Norton, Instruction Librarian, Uniformed Services University of the Health Sciences, Bethesda, MD; and Christopher William Belter, Bibliometrics Informationist, NIH Library, National Institutes of Health, Bethesda, MD



### **CE501 An Introduction to Using Computer Software for Qualitative Data Analysis**

**Cost:** \$320 (nonmember: \$570)

Learn how to analyze interview, focus group, and other qualitative data using low-cost and free software. Hand coding is still a best practice, but it is tedious, and analytic software has a number of advantages. If you are ready to add a new tool to your research repertoire, join us on this adventure!

*\*Note: Attendees are required to bring a laptop computer or other device with WiFi capability to participate in interactive activities.*

**Instructor:** Ayaba Logan, Independent Consultant, Ayaba and Associates, Charleston, SC

1:00 p.m.–5:00 p.m.



### **101 Supporting Medical Education through Emerging Technologies and Innovation Services**

**Cost:** \$265 (nonmember: \$490)

**Attendance maximum:** 30

Learn about the latest, amazing medical technologies, how academic medical libraries are using these technologies, and how you can justify requests for them at your institution. Interactive demonstrations of 3D printing, virtual and augmented reality, and more are included.

*\*Note: Attendees are required to bring a laptop computer or other device with WiFi capability to participate in interactive activities.*

# CONTINUING EDUCATION COURSES

**Instructors:** Chelsea Misquith, Emerging Technologies Librarian, Ruth Lilly Medical Library, Indiana University School of Medicine—Indianapolis, and Elisandro Cabada, Assistant Professor, University Library, and Adjunct Assistant Professor, Carle Illinois College of Medicine, University of Illinois—Urbana-Champaign



## CE200 Archiving for Non-Archivists

**Cost:** \$345 (nonmember: \$615)

**Attendance maximum:** 12

Learn the essentials of archiving, in an afternoon. You will get grounded in basic archival history and theory and learn the essentials of archiving: arranging, describing, and preserving physical and digital works.

**Instructors:** Pamela Pierce, Repository Librarian, and Steve Duckworth, University Archivist, OHSU Library, Oregon Health & Science University—Portland



## CE300 Journey to the Outer Limits of Evidence-Based Practice (EBP) Instruction

**Cost:** \$265 (nonmember: \$490)

A group of veteran evidence-based practice (EBP) instructors who have tried all the common approaches and developed new ones will show you how to develop and implement engaging and effective learner-centered approaches to teaching EBP.

*\*Note: Attendees are required to bring a laptop computer or other device with WiFi capability to participate in interactive activities.*

**Instructors:** Laura Menard, Assistant Director, Medical Education and Access Services, Ruth Lilly Medical Library, Indiana University School of Medicine—Indianapolis; Hanna Lee Schmilten, AHIP, Health Sciences Librarian, Libraries, Ohio University—Athens; Kathryn Houk, AHIP, Health Sciences Librarian, Health Sciences Library, University of Nevada—Las Vegas; Amy Blevins, Associate Director, Public Services, Ruth Lilly Medical Library, Indiana University School of Medicine—Indianapolis; and Stephanie M. Swanberg, AHIP, Associate Professor and Information Literacy & eLearning Librarian, Medical Library, Oakland University, Rochester, MI

## SATURDAY, MAY 16

8:00 a.m.—3:00 p.m.



## CE102 Effectiveness and Efficiency in Exhaustive Searches

**Cost:** \$400 (nonmember: \$700)

**Attendance maximum:** 25

Learn a new, efficient, and effective method for conducting exhaustive searches! Demonstrations and exercises introduce you to the method. Practicing in a database of your choice under the guidance of an experienced information specialist helps you hone your skills. You will leave able to create complex searches, which have been checked for completeness and translated in different databases, much faster than with traditional methods. Aimed at experienced searchers.

**Instructors:** Wichor M. Bramer, Biomedical Information Specialist, Medical Library, Erasmus University Medical Center, Rotterdam, the Netherlands, and Melissa L. Rethlefsen, AHIP, Associate Dean, George A. Smathers Libraries, and Fackler Director, Health Science Center Libraries, University of Florida—Gainesville



## CE103 Evidence-Based Practice (EBP) Bootcamp: Prepare to Teach EBP at Your Institution

**Cost:** \$320 (nonmember: \$570)

**Attendance maximum:** 30

Have you been asked to teach evidence-based practice (EBP)? This interactive course will give you a solid understanding of EBP and the tools to teach it in a variety of clinical and educational settings.

*\*Note: Attendees are required to bring a laptop computer or other device with WiFi capability to participate in interactive activities.*

**Instructors:** Megan von Isenburg, Associate Dean, Library Services & Archives, and Sarah Cantrell, Associate Director, Research and Education, Library & Archives, Duke Medical Center, Durham NC; and Connie Schardt, AHIP, FMLA, Adjunct Faculty, School of Information and Library Science, University of North Carolina—Chapel Hill

8:00 a.m.–noon



### **CE104 Advanced Search Techniques: Identifying Terms, Conceptual Breakdowns (Beyond PICO), Tips, Pitfalls, and Resources**

**Cost:** \$345 (nonmember: \$615)

**Attendance maximum:** 25

In this advanced course in searching to support systematic reviews and other major projects beyond problem, intervention, comparison, outcome (PICO) questions, you will learn how to identify resources that are appropriate for a review question, search beyond MEDLINE/PubMed with a focus on Embase, search for citations, and learn how to avoid common and not so common pitfalls.

**Instructors:** Julie Glanville, MCLIP, Associate Director, York Health Economics Consortium, University of York, York, United Kingdom, and Carol Lefebvre, HonFCLIP, Independent Information Consultant, Lefebvre Associates, Oxford, United Kingdom



### **CE105 Teaching Users about Grey Literature and How to Search for It**

**Cost:** \$265 (nonmember: \$490)

**Attendance maximum:** 25

End users may ask you how to search for all the grey literature on a topic. You can help them find the grey literature that is most essential and relevant to their questions. You will learn how to give guidance on structuring searches and evaluating grey literature research and sources. You will find out about learning sources for grey literature and grey literature tools for research and instruction. In short, you will learn how to help patrons end their grey literature searches with a bright smile!

*\*Note: Attendees are required to bring a laptop computer or other device with WiFi capability to participate in interactive activities.*

**Instructor:** Sarah Bonato, Reference/Research Librarian, CAMH Library, Centre for Addiction and Mental Health (CAMH), Toronto, ON, Canada



### **CE301 Real World Teaching: Using Teams, Cases, and Critical Pedagogy to Create One-Shot Classes**

**Cost:** \$265 (nonmember: \$490)

**Attendance maximum:** 30

Update your teaching approaches to incorporate techniques increasingly used by health sciences faculty. Learn how to incorporate team-based learning, real world cases, and critical pedagogy into your classes.

*\*Note: Attendees are required to bring a laptop computer or other device with WiFi capability to participate in interactive activities.*

**Instructor:** Margaret Henderson, AHIP, Health Sciences Librarian, SDSU Library, San Diego State University, San Diego, CA

### **302 Move Your Teaching Forward by Designing Your Instruction in Reverse**

**Cost:** \$265 (nonmember: \$490)

**Attendance maximum:** 30

Want to create presentations that engage your audience and help them remember and use what is important? Backwards design offers you a step-by-step approach to creating personalized, effective learning experiences!

**Instructor:** Alexander J. Carroll, AHIP, Librarian for Science, Technology, Engineering, and Mathematics (STEM) Research, Science and Engineering Library, Vanderbilt University, Nashville, TN



### **CE502 Evaluating Research in the Health Sciences Literature**

**Cost:** \$265 (nonmember: \$490)

**Attendance maximum:** 25

This course gives you the skills you need to evaluate research and assess quantitative and qualitative studies on their own merits. You will learn how to identify and evaluate basic health sciences research methods and their use, apply data literacy concepts, and incorporate your new skills into your work with clinicians, faculty, and students. Part of the course is devoted to fundamentals and part to hands-on analysis of case studies. The course ends with a journal club exercise.

# CONTINUING EDUCATION COURSES

**Instructors:** Abraham Wheeler, AHIP, Librarian, College of Osteopathic Medicine, Flint Research, and Department of Epidemiology and Biostatistics; Chana Kraus-Friedberg, AHIP, Liaison, Program in Public Health, Department of Pharmacology and Toxicology and College of Osteopathic Medicine; and Carin Graves, Librarian Liaison, Sociology, Social Work, Criminal Justice, and Human Development and Family Studies; Michigan State University—East Lansing

**8:00 a.m.—10:00 a.m.**



## **CE401 Explore Your Identity to Improve Your Practice: An Introduction to Critical Health Sciences Librarianship**

**Cost:** \$130 (nonmember: \$285)

**Attendance maximum:** 20

Health sciences librarians are increasingly called upon to address the intersection of identities and cultures in their institutions. This workshop introduces you to critical librarianship through an examination of identities. You will complete a creative assignment related to your identity and craft a plan to incorporate critical librarianship into a selected area of your work.

*\*Note: Attendees are required to bring a laptop computer or other device with WiFi capability to participate in interactive activities.*

**Instructor:** Xan Goodman, AHIP, Health Sciences Librarian, Lied Library, and Associate Professor, University Libraries, University of Nevada—Las Vegas

## **CE503 Survey Insights: Advanced Survey Techniques**

**Cost:** \$130 (nonmember: \$285)

**Attendance maximum:** 25

Deepen your knowledge of effective survey design and gain skills in advanced survey techniques. Topics that will be addressed include sampling methods, development of a survey analysis plan, pretesting questionnaires, ethical issues, and common errors in survey research. This course is for librarians and information specialists who want to develop their evidence-based practice research skills.

**Instructor:** Deborah H. Charbonneau, Associate Professor, School of Information Sciences, Wayne State University, Detroit, MI

**10:00 a.m.—noon**



## **CE402 Using Cultural Humility to Improve Your Health Sciences Librarianship**

**Cost:** \$130 (nonmember: \$285)

**Attendance maximum:** 20

Learn how to use the tool of cultural humility to develop and implement diverse, inclusive, and equitable strategies that improve your instruction and your workplace. Cultural humility involves a commitment to lifelong learning, the pursuit of humility in human interactions, the recognition of power imbalances, and involvement in a service community.

*\*Note: Attendees are required to bring a laptop computer or other device with WiFi capability to participate in interactive activities.*

**Instructor:** Xan Goodman, AHIP, Health Sciences Librarian, Lied Library, and Associate Professor, University Libraries, University of Nevada—Las Vegas



**This course was fantastic! I am fairly new to the field, and the content provided in this course will help me tremendously in my job.**



AVAILABLE IN  
PHARMACYLIBRARY



**APhA**

# PharmacotherapyFirst



From acne vulgaris to ventricular arrhythmias, **PharmacotherapyFirst** has you covered with over 100 modules spanning 18 disease state categories.

With new and updated content being added monthly, PharmacotherapyFirst is the most up-to-date and effective therapeutics reference for faculty, student pharmacists, and practitioners.

### Only **PharmacotherapyFirst** offers:

- » Over 100 pharmacotherapy topics in 18 disease state categories
- » Evidence-based and peer-reviewed content with links to primary literature
- » Easy-to-follow tables, graphics, and mnemonics
- » Mini-cases and detailed patient cases for case-based learning
- » Exclusive faculty-only cases for institutional subscribers

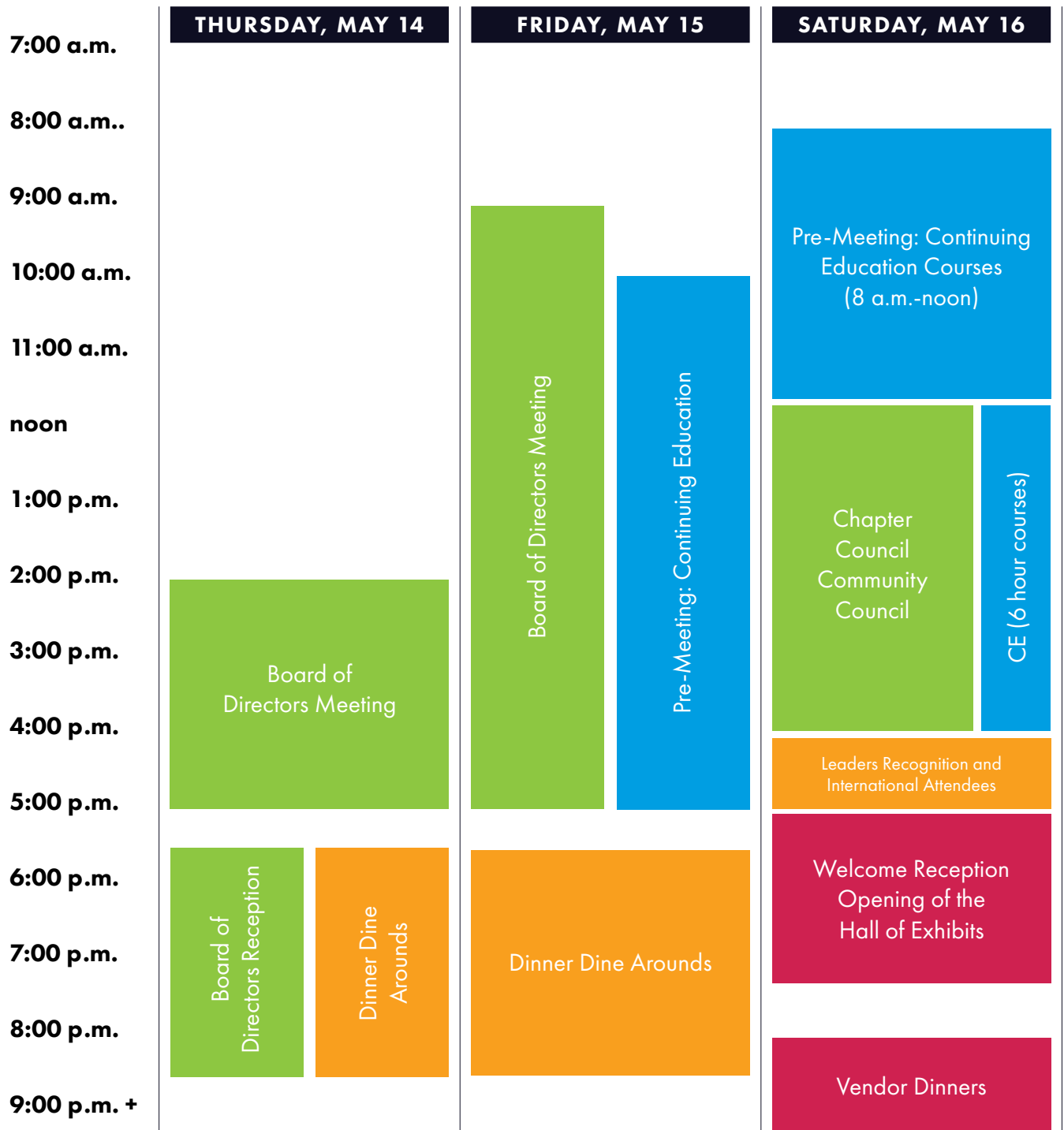
PharmacotherapyFirst is available exclusively with a PharmacyLibrary subscription. Visit [www.pharmacylibrary.com](http://www.pharmacylibrary.com) to find out more or contact us at [pharmacylibrary@aphanet.org](mailto:pharmacylibrary@aphanet.org) for information on subscription options.

Visit APhA at booth #611 for a demonstration of PharmacyLibrary and to discover how PharmacotherapyFirst can enhance your faculty's therapeutics curriculum.





# SCHEDULE-AT-A-GLANCE



- Plenary Sessions
- MLA & Affiliate Meetings
- Networking Events
- Continuing Education & Breakouts
- Vendor Events

SUNDAY, MAY 17			MONDAY, MAY 18			TUESDAY, MAY 19					
Affiliate & Unit Meetings	New Member Breakfast	Sunrise Seminars	Affiliate & Unit Meetings	Sunrise Seminars	Affiliate & Unit Meetings	Sunrise Seminars		7:00 a.m.			
MLA Welcome Awards Presidential Address			Open Forum			NLM UPDATE			8:00 a.m.		
BREAKOUT 1			BREAKOUT 3			BREAKOUT 5			9:00 a.m.		
POSTER 1	Vendor Lunch & Learn	Exhibits	POSTER 2	Vendor Lunch & Learn	Exhibits	CAUCUS GATHERINGS	Vendor Lunch & Learn	10:00 a.m.			
BREAKOUT 2			BREAKOUT 4			BREAKOUT 6			11:00 a.m.		
PLENARY: McGovern (on diversity)			MLA Business Meeting, Awards, Presidential Inaugural			OPEN SCIENCE SESSION			noon		
CAUCUS GATHERINGS			CAUCUS GATHERINGS			JANET DOE LECTURE AND RECEPTION			1:00 p.m.		
Dinner Dine Arouds Informal Caucus Dinners Quiet Gathering Options		Vendor Receptions	Dinner Dine Arouds Informal Caucus Dinners Quiet Gathering Options		Vendor Receptions				2:00 p.m.		
									3:00 p.m.		
									4:00 p.m.		
									5:00 p.m.		
									6:00 p.m.		
									7:00 p.m.		
									8:00 p.m.		
									9:00 p.m. +		

# HOW TO REGISTER

**Early Bird Registration  
Deadline Is April 8**

## Three Ways to Register

1. Register online at [www.mlanet.org/mla20](http://www.mlanet.org/mla20).
2. Mail your registration form with payment to MLA-CDS, 7 Technology Park Drive, Bourne, MA 02532.
3. Fax your registration form with credit card payment to 508.743.9662.

Register by April 8, 2020, to receive the early-bird discount and save up to \$100!

If you have questions or need assistance with your registration, please email [medicalLibrary@xpressreg.net](mailto:medicalLibrary@xpressreg.net) or call 774.247.4013, Monday–Friday, 9:00 a.m.–5:00 p.m., eastern time.

## Payment

Payment must accompany your registration. You may pay by check (payable to MLA), money order, Visa, MasterCard, American Express, Discover, or wire transfer. Payments must be in US dollars and free of bank charges. Only registrations paid by credit card or purchase orders may be faxed to 508.743.9662.

If you are an MLA member and would like to be invoiced, you must include a purchase order with your registration. Payments not received by June 19, 2020, will be charged an \$80 late fee.

## Electronic/Wire Transfer Information

Contact MLA at [registration@mail.mlahq.org](mailto:registration@mail.mlahq.org) for transfer information.

## Registration Packages

All meeting and e-Conference registrants will have exclusive online access to slides and content for most meeting sessions through May 2021. Posters will be available online a few weeks prior to the meeting.

	Packages			
Benefits	A	C	D	E
Online access to session content	X	X	X	X
Access to video of keynote and other select plenary sessions	X	X	X	X
Access to posters before, during, and after the meeting	X	X	X	X
Access to program, abstract book, and list of attendees	X	X	X	X
Access to online meeting planner	X	X	X	X
Admission to meeting sessions and Hall of Exhibits	X	X		
1 Ticket to the Welcome Reception	X	X		

For the discounted fees listed on the registration form or online, register before midnight, central time, Wednesday April 8, 2020, and save up to \$100.

### Package A: Meeting Registration

Includes admission to all sessions, exhibits, the Welcome Reception, and the Janet Doe Lecture and reception.

### Package C: One-Day Registration

Includes admission to all sessions and exhibits on a specific day. During registration, indicate the day you wish to attend.

### Package D: Individual e-Conference

Members and nonmembers who cannot travel to the meeting can still be part of the meeting community via online access.

### Package E: Institutional e-Conference License

Institutional Members: \$699  
Non-MLA Institutional Members: \$979

See the meeting website to sign up your staff ahead of the meeting.

## Exhibits-only

Exhibits-only allows entry only to the Hall of Exhibits from Sunday to Tuesday for spouses, significant others, and persons working outside the profession. It does not provide admission to the Saturday Welcome Reception, plenary sessions, or meeting programming, or provide access to online meeting content. Exhibit-only passes are sold onsite at the MLA Registration Center for \$50.

## Confirmations

If you register online, you will receive a confirmation by email within minutes. If you register by mail or fax, allow five days after receipt for an email confirmation. If an email address is invalid or missing, allow two weeks for a mailed confirmation. For easy badge retrieval, please bring your confirmation letter with you to the MLA Registration Center.

## Member Discount

MLA members in good standing are eligible for discounted member rates. To qualify for member rates, MLA membership for 2020 must be paid by March 31, 2020.

Nonmembers may join at [www.mlanet.org/join](http://www.mlanet.org/join). Members of the following groups qualify for MLA member registration rates:

- American Association of Law Libraries (AALL)
- Arbeitsgemeinschaft für Medizinisches Bibliothekswesen (AGMB) [German Medical Library Group]
- Association for Health Information and Libraries in Africa (AHILA)
- Association for Library and Information Science Education (ALISE)
- Australian Library and Information Association (ALIA)
- Canadian Health Libraries Association/Association des bibliothèques de la santé du Canada (CHLA/ABSC)
- European Association for Health Information and Libraries (EAHIL)
- Japan Medical Library Association (JMLA)
- Korean Medical Library Association (KMLA)
- Medical Library Association of Nigeria
- Special Libraries Association (SLA)
- Taiwan Medical Library Association (TMLA)

## Student Discount

You qualify for student rates if you hold student membership in MLA. Student members also qualify for continuing education courses (CE) and symposia for \$50 each, pending available space. You may join MLA as a student member when you register online or complete the membership form online at [www.mlanet.org/join](http://www.mlanet.org/join).

## Special Services

If you have a disability or dietary requirements, please include a written description of your needs with your registration and an email address or phone number where you can be contacted for more information. MLA must receive the information by April 8, 2020.

## Children

All children must have badges. Complimentary badges are available at the MLA Registration Center. Children under thirteen are not permitted in the exhibit hall.

## To arrange for child care service, guests should contact providers directly:

A Brilliant Nanny, [www.abnanny.com](http://www.abnanny.com)

Care.com, [www.care.com](http://www.care.com)

Portland Nanny, [www.portlandnanny.com](http://www.portlandnanny.com)

Please note that MLA is not able to recommend these providers based on experience. This information is simply provided as a convenience to parents who may wish to arrange for child care services while in Portland. MLA makes no claims regarding the services listed here. Parents are urged to address any questions or concerns directly with the individual provider.

## Onsite Registration Hours

Meeting materials will be distributed at the MLA Registration Center, sponsored by Wolters Kluwer, in the Oregon Convention Center.

Friday, May 15, 7:00 a.m.–7:00 p.m.

Saturday, May 16, 7:00 a.m.–7:30 p.m.

Sunday, May 17, 7:00 a.m.–5:00 p.m.

Monday, May 18, 7:00 a.m.–5:00 p.m.

Tuesday, May 19, 7:00 a.m.–1:00 p.m.

## Questions

Staff are happy to help. For registration questions, please email [medicalLibrary@xpressreg.net](mailto:medicalLibrary@xpressreg.net) or call 774.247.4013, Monday–Friday, 9:00 a.m.–5:00 p.m., eastern time. For meeting or setup related questions, contact Kate Corcoran, [corcoran@mail.mlahq.org](mailto:corcoran@mail.mlahq.org); for CE course–related questions, contact Debra Cavanaugh, [cavanaugh@mail.mlahq.org](mailto:cavanaugh@mail.mlahq.org).

## Cancellations

All cancellations for meeting registration and CE courses must be submitted in writing and emailed to MLA at [registration@mail.mlahq.org](mailto:registration@mail.mlahq.org).

Meeting cancellations received by April 8, 2020, are subject to a \$50 fee. You will be assessed a \$50 fee for each CE course change or cancellation.

After April 8, 2020, MLA will give refunds only for documented emergencies. Refunds will be processed within six weeks after the meeting. MLA will honor written requests to transfer meeting registration or CE registration to another person without charge.

# REGISTRATION FORM

<input type="text"/>	<input type="text"/>	<input type="text"/>
FIRST NAME*	LAST NAME*	MLA MEMBER ID
<input type="text"/>		
INSTITUTION/ORGANIZATION/COMPANY*		
<input type="text"/>		
LIBRARY/AGENCY/DEPARTMENT*		
<input type="text"/>		
MAILING ADDRESS		
<input type="text"/>	<input type="text"/>	<input type="text"/>
CITY*	STATE/PROVINCE	ZIP/POSTAL CODE
<input type="text"/>		
EMAIL ADDRESS (REQUIRED FOR EMAIL CONFIRMATION)		
<input type="text"/>		
ADDITIONAL EMAIL TO RECEIVE CONFIRMATION (OPTIONAL)		
<input type="text"/>		
COUNTRY* (IF OUTSIDE THE US) <span style="float:right">*APPEARS ON BADGE</span>		

If you require accommodations, please attach a written description of your needs.

Check here if you have dietary restrictions. Please describe: \_\_\_\_\_

By registering, I grant to MLA the right to take photographs of me in connection with the annual meeting. I authorize MLA, its assigns, and transferees to copyright, use, and publish the same in print or electronically.

CELLULAR PHONE (WILL NOT BE PUBLISHED)

TWITTER\*

## I. REGISTRATION RATES

Meeting registration	Early Bird	Regular
- Member/Institutional representative	\$685	\$785
- Member Emeritus, Retired Fellow, Lower Dues, HINARI-Eligible, Unemployed	\$343	\$393
- Student Member	\$274	\$314
- Nonmember	\$959	\$1,059
<b>One-day attendance</b>		
- Member/Institutional representative	\$343	\$393
- Member Emeritus, Retired Fellow, Lower Dues, HINARI-Eligible, Unemployed	\$206	\$236
- Student Member	\$171	\$196
- Nonmember	\$480	\$550
<b>Open Science Session only</b>	\$150	\$200
<b>Exhibit only</b>	\$50	\$50
<b>e-Conference</b>		
- Member/Institutional representative	\$535	\$635
- Member Emeritus, Retired Fellow, Lower Dues, HINARI-Eligible, Unemployed	\$343	\$393
- Student Member	\$274	\$314
- Nonmember	\$809	\$909

**SECTION I. SUBTOTAL** .....\$ \_\_\_\_\_

## II. CONTINUING EDUCATION

**CE Course Deposit (Friday, May 15, and Saturday, May 16)**..... \$ \_\_\_\_\_

**SECTION II. SUBTOTAL** .....\$ \_\_\_\_\_

	<b>SECTION I</b>	<b>\$</b>	<input type="text"/>
	<b>SECTION II</b>	<b>\$</b>	<input type="text"/>
	<b>TOTAL</b>	<b>\$</b>	<input type="text"/>

For credit card orders, MLA will correct any errors in addition.

What pronouns do you prefer colleagues use when talking about you?

- She/her/hers
- He/him/his
- They/them/theirs
- Other (please specify): \_\_\_\_\_ (15 character limit)

### CHECK BOX IF:

- New Member\*/First-Time Attendee  
\*MLA members who are attending their first annual meeting or new MLA members (3 years or less).
- I don't want an annual meeting bag.
- I don't want exhibitor email

## PAYMENT INFORMATION

- AmEx  Discover  MasterCard  Visa  Electronic/wire transfer
- Check or international check in US\$ drawn against a US bank  
(Make check payable to Medical Library Association and mail to  
MLA-CDS, 7 Technology Park Drive, Bourne, MA 02532

PRINT NAME

CARD NUMBER  EXP. DATE

SIGNATURE

Register at [www.mlanet.org](http://www.mlanet.org)



## Continuing Education Courses

Please indicate first and second choices with "1" and "2." Second choice will be used if your first-choice course is full. For continuing education course-related questions, contact Debra Cavanaugh at 312.419.9097 or [cavanaugh@mail.mlahq.org](mailto:cavanaugh@mail.mlahq.org).

### Friday, May 15

#### 10:00 a.m.–5:00 p.m.

\_\_\_\_\_ CE100 Advanced Search Strategy Design: Search Filters, Text Mining, and Peer Review  
Cost: \$400 (nonmember: \$700)

\_\_\_\_\_ CE400 Do You Want to Be a Library Director? Knowledge, Skills, and Career Paths  
Cost: \$320 (nonmember: \$570)

\_\_\_\_\_ CE500 Charting a New Course: Practical Data Visualization for Librarians  
Cost: \$320 (nonmember: \$570)

\_\_\_\_\_ CE501 An Introduction to Using Computer Software for Qualitative Data Analysis  
Cost: \$320 (nonmember: \$570)

#### 1:00 p.m.–5:00 p.m.

\_\_\_\_\_ CE101 Supporting Medical Education through Emerging Technologies and Innovation Services  
Cost: \$265 (nonmember: \$490)

\_\_\_\_\_ CE200 Archiving for Non-Archivists  
Cost: \$345 (nonmember: \$615)

\_\_\_\_\_ CE300 Journey to the Outer Limits of Evidence-Based Practice (EBP) Instruction  
Cost: \$265 (nonmember: \$490)

### Saturday, May 16

#### 8:00 a.m.–3:00 p.m.

\_\_\_\_\_ CE102 Effectiveness and Efficiency in Exhaustive Searches  
Cost: \$400 (nonmember: \$700)

\_\_\_\_\_ CE103 Evidence-Based Practice (EBP) Bootcamp: Prepare to Teach EBP at Your Institution  
Cost: \$320 (nonmember: \$570)

#### 8:00 a.m.–noon

\_\_\_\_\_ CE104 Advanced Search Techniques: Identifying Terms, Conceptual Breakdowns (Beyond PICO), Tips, Pitfalls, and Resources  
Cost: \$345 (nonmember: \$615)

\_\_\_\_\_ CE105 Teaching Users about Grey Literature and How to Search for It  
Cost: \$265 (nonmember: \$490)

\_\_\_\_\_ CE301 Real World Teaching: Using Teams, Cases, and Critical Pedagogy to Create One-Shot Classes  
Cost: \$265 (nonmember: \$490)

\_\_\_\_\_ CE302 Move Your Teaching Forward by Designing Your Instruction in Reverse  
Cost: \$265 (nonmember: \$490)

\_\_\_\_\_ CE502 Evaluating Research in the Health Sciences Literature  
Cost: \$265 (nonmember: \$490)

#### 8:00 a.m.–10:00 a.m.

\_\_\_\_\_ CE401 Explore Your Identity to Improve Your Practice: An Introduction to Critical Health Sciences Librarianship  
Cost: \$130 (nonmember: \$285)

\_\_\_\_\_ CE503 Survey Insights: Advanced Survey Techniques  
Cost: \$130 (nonmember: \$285)

#### 10:00 a.m.–noon

\_\_\_\_\_ CE402 Using Cultural Humility to Improve Your Health Sciences Librarianship  
Cost: \$130 (nonmember: \$285)

# HOTEL INFORMATION

In partnership with onPeak, MLA's official housing partner, MLA has secured discounted housing rates at a selection of Portland hotels offering you convenient and affordable options for your trip to MLA '20. Take advantage of these discounted rates by booking your stay today at one of MLA's preferred meeting hotels listed below.

For the latest information on hotel options and availability, check MLA's online hotel reservation portal at <https://compass.onpeak.com/e/012604609>. You can also contact onPeak directly by calling 800.243.1582 or by emailing [mla@onpeak.com](mailto:mla@onpeak.com).

## Hilton Portland Downtown: MLA's Headquarters Hotel

Conveniently located in the heart of the city and one block from the MAX Light Rail system, the Hilton Portland Downtown is the largest hotel in the state and has been newly redesigned with an inviting, vibrant lobby and guest rooms that incorporate a timeless and contemporary feel

When you book your hotel room at MLA's headquarters hotel and under MLA's group meeting block, you get special discounted rates as well as other special amenities, such as free in-room WiFi and 10% discount on food and beverage to use at hotel outlets. You will also get the best networking opportunities and help the association meet its contractual obligations.

## Courtyard Portland Downtown Convention Center

The Courtyard Portland Downtown Convention Center is located 0.4 miles from the Oregon Convention Center and recently completed a renovation offering full-service amenities to make your stay comfortable and productive. MLA '20 attendees will receive special discounted rates and free in-room WiFi when they book rooms through onPeak, MLA's online reservation portal.

## Crowne Plaza Portland Downtown Convention Center

The Crowne Plaza Portland Downtown redefines the upscale hospitality experience with an unwavering commitment to sustainability with a unique range of amenities and an innovative approach to delivering the highest standards of comfort. MLA '20 attendees will receive special discounted rates and free in-room WiFi when they book rooms through onPeak, MLA's online reservation portal.

## DoubleTree by Hilton Hotel Portland

The DoubleTree by Hilton Hotel Portland is conveniently located in the center of the up-and-coming Lloyd District and within walking distance of the Oregon Convention Center, Moda Center, and Portland Veterans Memorial Coliseum. MLA '20

attendees will receive special discounted rates and free in-room WiFi (with Hilton Honors enrollment) when rooms are booked through onPeak, MLA's online reservation portal.

Exclusive hotel rates for MLA '20 attendees expire **April 20, 2020**, and are subject to availability. Don't wait—make your reservations now!

## How to Book Your Housing Reservations for MLA '20

- All housing reservations can be made online through the MLA '20 official housing portal at <https://compass.onpeak.com/e/012604609>. Continue to check the online website for current rates and availability.
- Call onPeak directly at 800.243.1582. The best time to call is before noon or between 3:00 p.m. and 5:00 p.m., central time.
- Email your requests and any questions you have to [mla@onpeak.com](mailto:mla@onpeak.com). Responses can be expected within forty-eight hours, excluding weekends and holidays.

**Guarantee:** All reservations will require a valid credit card on file to secure your reservation. A deposit equal to one night's room and tax will be applied the credit card on file on **April 20, 2020**, as a guarantee. There are no change fees and no full prepayment required at the time of booking.

**Cancellation:** The deposit is refundable only if notice is received by the hotel at least seventy-two hours prior to arrival and a cancellation number is obtained.

**Roommates:** If you wish to split the room cost with other guests, please coordinate reservations with your roommates and then advise the hotel upon check-in and check-out. To locate a roommate, some members have used email discussion lists such as MEDLIB-L ([www.mlanet.org/discussion/medlibl.html](http://www.mlanet.org/discussion/medlibl.html)). Caution should always be exercised when selecting roommates.

## Are You Holding the Right Amount of Rooms and Room Nights for MLA '20?

Don't sit on unneeded rooms and get caught with cancellation fees. If you have already made your hotel reservations for MLA '20 and you might have over-reserved rooms, take a moment now to log back into your reservation (<https://compass.onpeak.com/e/012604609>) and update your room details to reflect how many nights and rooms you will really need to ensure you do not get charged any cancellation fees for any unused rooms. Rooms that you give up get released back to the housing block for use by other attendees.

MLA's only official housing service is onPeak. If you are contacted by others offering housing for the meeting, please note that they are not affiliated with MLA. Entering into financial agreements with such companies can have adverse and costly consequences.

## Air Service

Portland International Airport (PDX) is currently served by 18 international and domestic airlines offering over 500 scheduled passenger arrivals and departures daily. Sixty US cities offer nonstop flights to Portland, including Atlanta, Orlando, New York, Boston, and Chicago. Internationally, you can fly direct to PDX from Amsterdam, Calgary, Frankfurt, Guadalajara, London, Puerto Vallarta, Reykjavik, Tokyo, Toronto, and Vancouver. For more information about PDX, please visit [www.flypdx.com](http://www.flypdx.com).

\*MLA has arranged for discounted travel



MLA has arranged for attendees to receive a 5% discount off published fares for travel booked with American Airlines (AA). The discount can be booked online at [www.aa.com](http://www.aa.com) for AA and American Eagle (AE) flights traveling during the dates of May 12, 2020–May 22, 2020, using the authorization number **3450DB**. Please note, the discount excludes basic economy and nondiscountable fares. For questions regarding ticketing, please call AA Meeting Services at 800.433.1790.

## Getting to and from the Airport

PDX is located 9 miles (14.5 km) northeast of downtown Portland and provides easy access for visitors getting to and from the airport.

### MAX Light Rail

The MAX Light Rail train conveniently connects PDX airport to Portland's city center. The MAX Light Rail Red Line is the easiest way to travel to and from the airport with trains departing every 15 minutes. The MAX Light Rail can be found on the main level of PDX airport, at the south end of the ticket lobby, beyond the Starbucks. Here are some quick facts:

- The trip between the airport and downtown Portland takes about 38 minutes.
- An adult ticket costs \$2.50 (youth \$1.25, honored citizen \$1). MAX ticket machines return change in coins, so small bills are recommended.
- You can roll your luggage on board.
- The first train of the day arrives at PDX at 4:45 a.m. The last train departs PDX at 11:50 p.m.
- The MAX station and ticket machines are located on the lower level, next to the south baggage claim area (turn right at the base of the escalator).

For complete schedules and more information, visit [www.trimet.org/schedules/maxredline.htm](http://www.trimet.org/schedules/maxredline.htm).

## Taxi Cabs

The average taxi fare from the airport to downtown is approximately \$35 before gratuity. The one-way trip takes 20–40 minutes. You can find taxis waiting in the center section of the airport terminal's lower roadway, outside of baggage claim. Below is a listing of taxi cabs that serve the Portland area, with many offering discount coupons on their websites.

- **Broadway Cab:**  
503.333.3333, [www.broadwaycab.com](http://www.broadwaycab.com)
- **Green Cab & Green Shuttle:**  
503.234.1414, [www.greentrans.com](http://www.greentrans.com)
- **Radio Cab Company:**  
503.227.1212, [www.radiocab.net](http://www.radiocab.net)
- **Union Cab:**  
503.222.2222, [www.unioncabpdx.com](http://www.unioncabpdx.com)

## Airport Shuttles

Shuttles at PDX can be found on the lower roadway, outside of baggage claim. Many hotels offer free shuttle services to and from the airport. Check with the hotel before making any transportation arrangements.

**Blue Star Downtown Express** is Portland's only scheduled service between PDX and the Downtown/Lloyd Center areas, leaving Downtown/Lloyd Center and PDX every 30 minutes, is located at the bottom entrance of the terminal, directly outside of baggage on Island #3 of the commercial roadway. One-way per person is \$14.00 or \$24.00 round-trip per person. To view shuttle schedules or book your shuttle services, visit [www.bluestarbus.com/downtown-express.php](http://www.bluestarbus.com/downtown-express.php) or call 503.249.1837. Shuttles should be arranged at least 48 hours prior to your needed date.

## Rental Cars

Portland is one of the most unique and scenic cities in the United States, and one of the best ways to see all the wonderful attractions Portland offers is by car. PDX offers several car rental options conveniently located right on-site.

Airport rental car pickup and drop-off at PDX is located on Level 1 of the short-term parking garage. For pickup, proceed past baggage claim to the tunnel and take the first elevator bank to Level 1.

For drop-off, follow signs on the lower roadway for “Rental Cars.”

Below are the rental car companies that are located on airport grounds at PDX airport. For availability and pricing information, please reach out to the rental car companies directly or visit [www.flypdx.com/RentalCars](http://www.flypdx.com/RentalCars) for more information.

- **AVIS:** 503.249.4590
- **Dollar Car Rental:** 503.249.4792
- **Enterprise:** 503.252.1500
- **Hertz:** 503.520.7900
- **National:** 800.277.7368

## Limousines and Town Cars

Limousines and town cars at PDX can be found on the lower roadway, outside of baggage claim at the far end closest to the parking garage. To make prearranged limousine or town car reservations, visit [www.flypdx.com/GroundTransportation/Limo](http://www.flypdx.com/GroundTransportation/Limo) and contact your company of choice.

## App-Based Rideshare

At PDX, just as you would elsewhere, use the Uber, Lyft, or Wingz apps to request your ride. Follow signs to baggage claim, making sure you are on the lower level. Once you have your luggage in hand and are ready to go, request a ride. Then follow signs to the baggage claim the lower level. Walk outside, and your pickup is on the side of Island 2, outside of baggage claim.

- Lyft: Use the Lyft app to arrange for your ride.
- Uber: Use the Uber app to arrange for your ride.
- Wingz: Use the Wingz website to arrange for your ride.

## Other Options For Getting To Portland

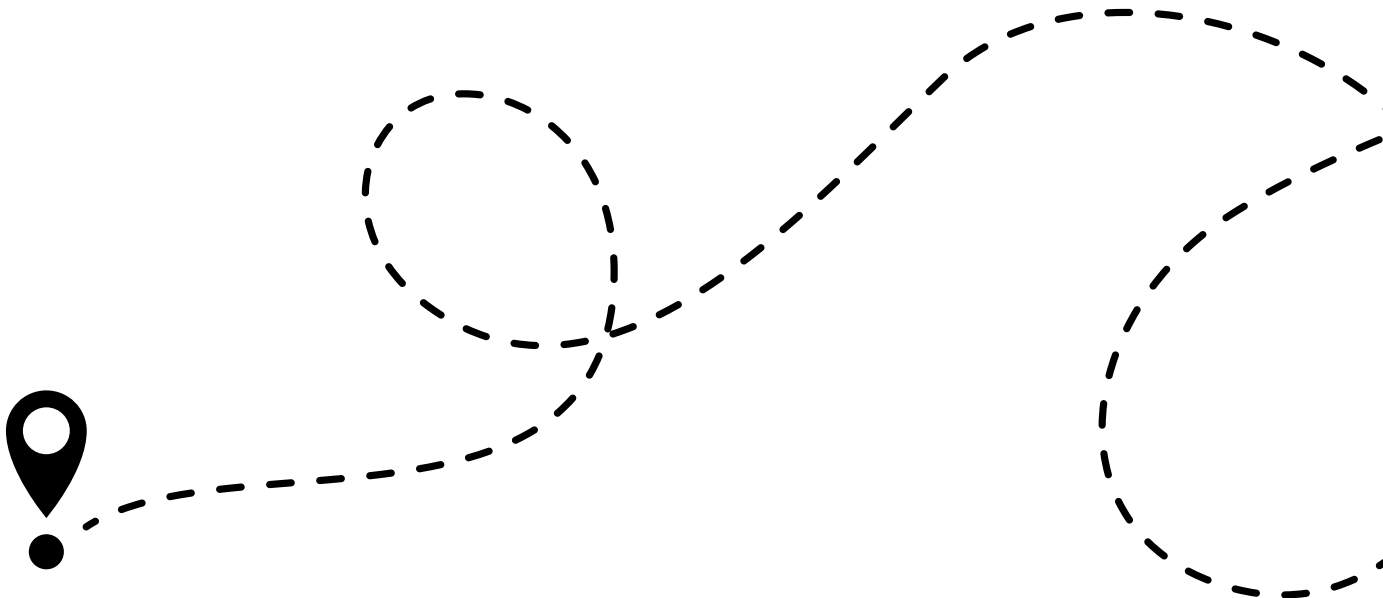
### Amtrak to Union Station

Portland’s train station is conveniently located near many mass transit options. Union Station, with its elegant architecture, 50-foot (15.2 m) clock tower, and cheerful “Go By Train” neon sign is a Portland landmark.

The station is located at the foot of the Broadway Bridge in Old Town Chinatown, just minutes from the center of downtown. The Portland Transit Mall—which carries many bus lines as well as the MAX Light Rail Green, Orange, and Yellow lines ([www.travelportland.com/article/max-light-rail/](http://www.travelportland.com/article/max-light-rail/))—is one block from Union Station on Fifth and Sixth Avenues.

Union Station is served by three Amtrak passenger trains:

- The **Amtrak Cascades** is a convenient link to the Pacific Northwest and British Columbia. With four daily departures between Seattle and Portland, as well as daily service to Vancouver, BC, and two daily trips to Eugene, OR.
- The **Coast Starlight** operates daily, connecting the West Coast’s most popular destination cities, including Los Angeles, San Francisco, Portland, and Seattle.
- The **Empire Builder** runs daily, begins in Portland, and heads east to Chicago with stops at Whitefish, Glacier National Park, Minot, Minneapolis, Milwaukee, and other locations.



## BoltBus and Greyhound

It is easy to get to and from Portland by bus with the iconic Greyhound and its subsidiary BoltBus. The two bus companies connect Portland with regular service to cities near and far.



### BoltBus

BoltBus ([www.boltbus.com](http://www.boltbus.com)) has been a big hit since its 2012 arrival in Portland with low fares in the \$10–\$25 range. In addition to savings, BoltBus passengers enjoy free WiFi, electrical outlets, and about 3 inches of extra legroom compared to standard coaches. Although you board at the curb, you are guaranteed a seat with the purchase of a ticket, and boarding groups keep things orderly.

BoltBus serves the Pacific Northwest with frequent service between Portland and Vancouver, BC; Bellingham, WA; Seattle; Albany, OR; and Eugene, OR.

The BoltBus stop is on the south side of Northwest Everett Street between Eighth Avenue and Broadway.



### Greyhound

Greyhound is the United States' largest intercity bus transportation provider and connects Portland with its more than 2,400 service locations in North America. You can buy Greyhound bus tickets online; over the phone; at the Greyhound ticket booth at 427 NW Sixth Avenue or at the Greyhound bus terminal in Portland at 7411 NW Station Way, next to the Union Station train station; and on the MAX light rail line.

In addition to BoltBus and Greyhound, several other bus services provide convenient, affordable, and frequent service to some of the most beautiful destinations in the region.

- **Cascades POINT** ([oregon-point.com/cascades-point/](http://oregon-point.com/cascades-point/)): Seven daily trips to and from Portland and Eugene.
- **CC Rider** ([www.nworegontransit.org/agencies/columbia-county-rider/](http://www.nworegontransit.org/agencies/columbia-county-rider/)): Weekday service from Portland to St. Helens and Astoria.
- **Central Oregon Breeze** ([cobreeze.com](http://cobreeze.com)): Daily service between Portland and Bend (with twice-daily service during peak season).
- **NorthWest POINT** ([oregon-point.com/nw\\_point.php](http://oregon-point.com/nw_point.php)): Twice-daily service to and from Portland and Astoria.
- The **Wave** ([www.wavetransit.com](http://www.wavetransit.com)): Twice-daily service to and from Portland and multiple coastal cities, including Oceanside, Cannon Beach, and Lincoln City.

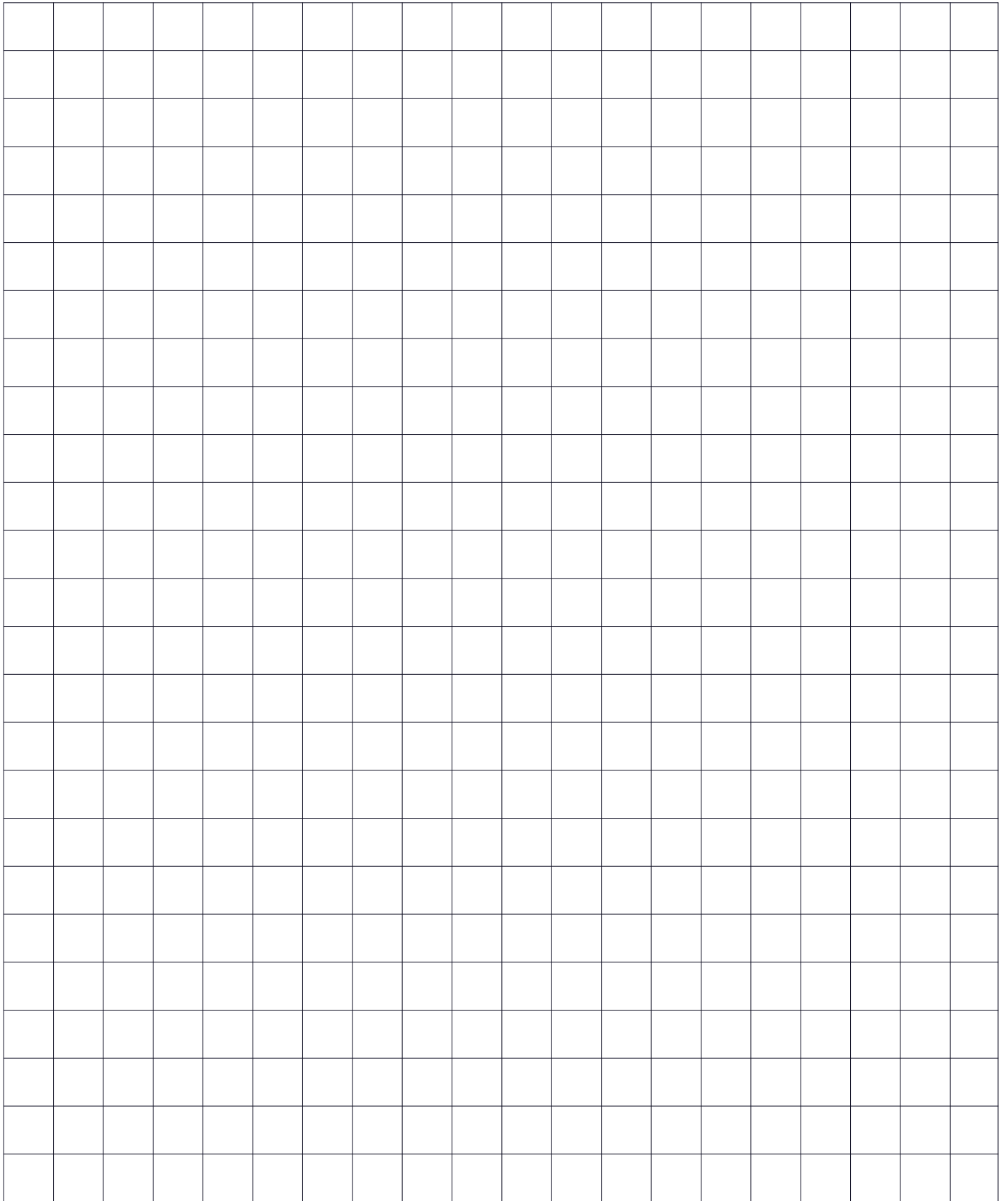


MLA conference is an enlightening perspective on the world of Medical Librarianship.











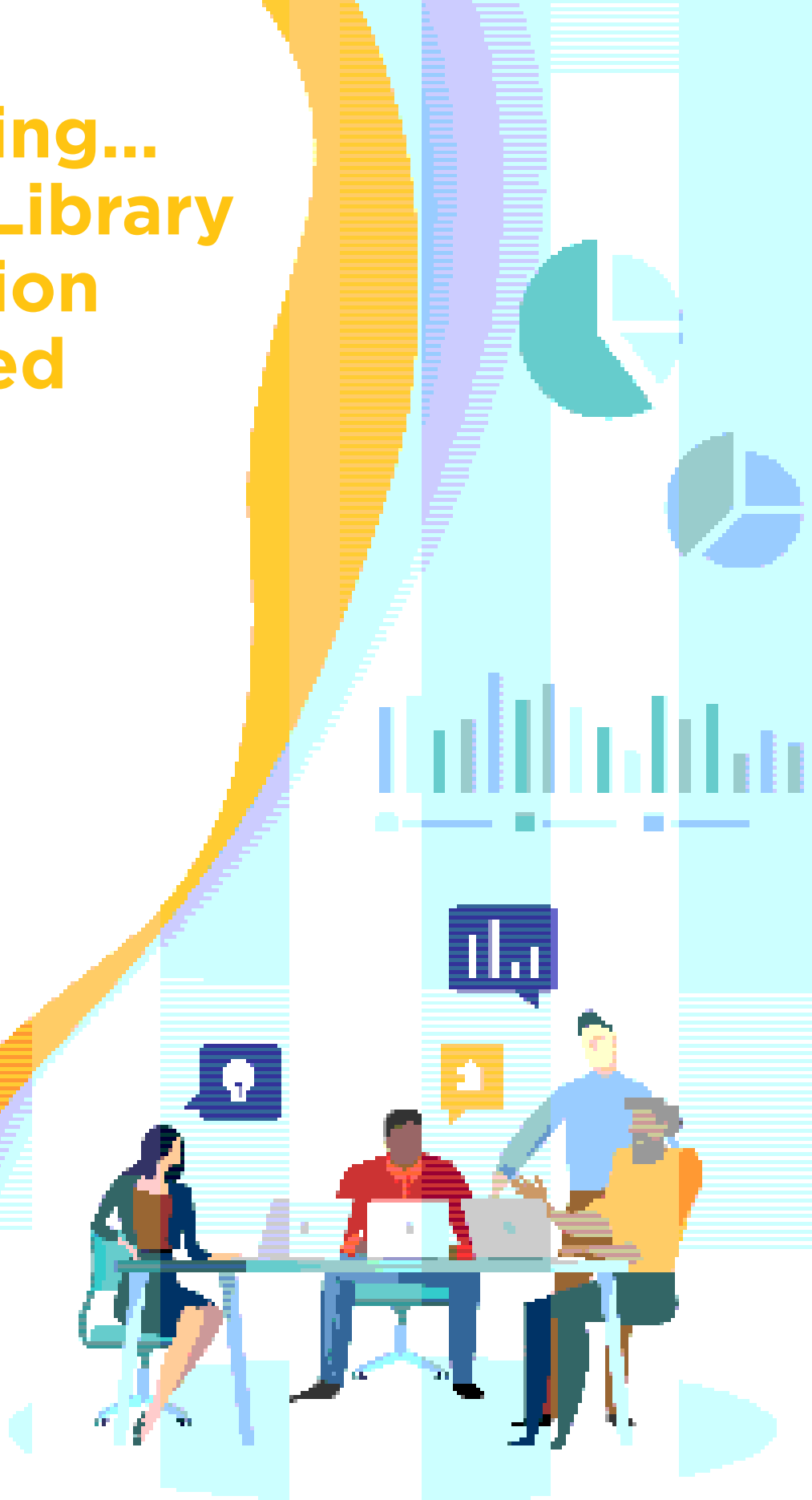
# Introducing... Medical Library Association Self-Paced Courses!

## Branch

MLA a  
first se

The Ge  
design  
health

No ma  
your e  
offers  
profes



Visit [MEDLIB-ED](#) for additional information.



*Expand your  
horizons  
with Ovid®*

Ovid® is the leading information search, discovery, and management solution providing a single online destination for seamlessly accessing and working with premium online journals, books, and databases from the world's leading publishers.

**Visit Wolters Kluwer at booth #701** to speak to an Ovid Representative and learn about:

- AudioDigest Platinum
- Ovid® Discovery
- Ovid Clinical Edge
- Ovid Nursing Edge
- Visible Body®: 3D Human Anatomy Modeling Interactive Programs
- Bates' Visual Guide to Physical Examination
- Acland's Video Atlas of Human Anatomy
- 5MinuteConsult.com
- Lippincott Journals and Books
- JBI Evidence Based Practice Database
- LWW Health Library Collections including new collections in Internal Medicine, Psychiatry and Pathology
- And more!

**See you in Portland!**  
[www.wolterskluwer.com](http://www.wolterskluwer.com)