

MLA '24

Portland, OR

MAY 18-21  STRONGER TOGETHER

PLATINUM SPONSOR



OFFICIAL PROGRAM

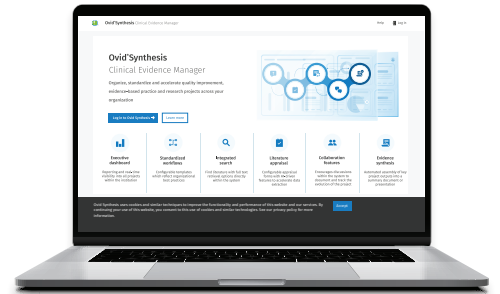


Get exclusive access to NEJM Group publications including the *New England Journal of Medicine* (NEJM), *NEJM Evidence*, *NEJM Catalyst Innovations in Care Delivery*, *NEJM Journal Watch*, *NEJM AI* and *NEJM Archive*.



Ovid® Synthesis

Built in collaboration with healthcare leaders who prioritize patient-centered care and quality improvement, Ovid® Synthesis is an evidence-based workflow solution to streamline EBP and QI projects and reporting across the institution.



New Lippincott®
Journals
Exclusively
Available
on Ovid®



New Featured
Collections
on Ovid®

Collections on Ovid® bring together the best sets of content resources to provide clinicians, students and researchers access to the most up-to-date and relevant research.

Our latest collections include:

- Evidence-Based Health Collection
- Behavioral Health Collections
- Public Health Advantage
- Diversity, Equity, and Inclusion (DEI)

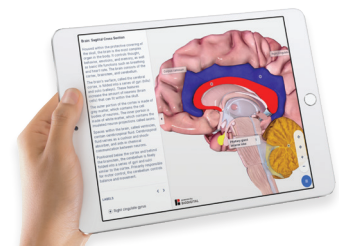
BIODIGITAL

BioDigital Human
on Ovid®

**3D Human Body Anatomy
Teaching Solution**

A cloud-based, interactive anatomy teaching and learning solution that supports students and faculty across health and medicine.

**VR now
available in
addition to
web and
mobile app!**



Thank You Sponsors

PLATINUM SPONSOR



GOLD SPONSOR



ELSEVIER

SILVER SPONSOR



BRONZE SPONSORS



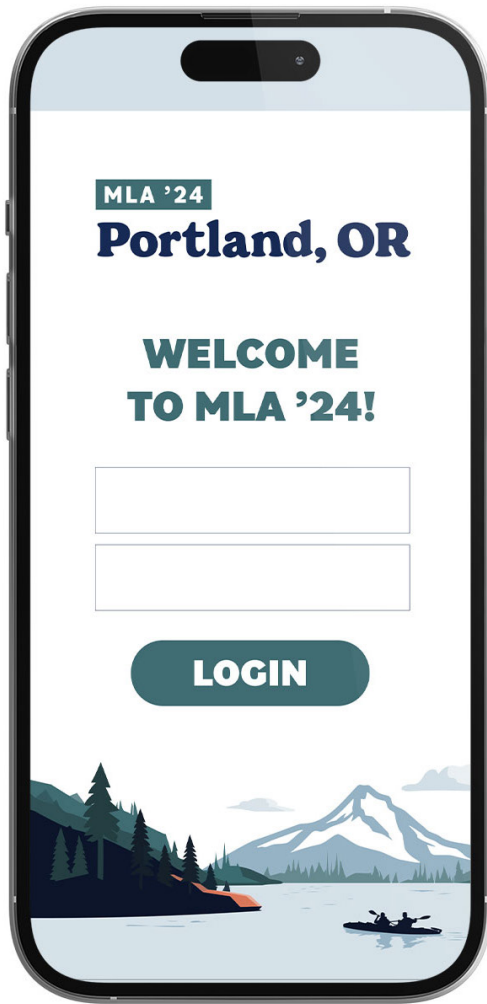
SPRINGER NATURE



Table of Contents

MLA Statement of Appropriate Conduct	6 - 7
Welcome Letters, Thank You Volunteer Leaders	8 - 10
General Information	11 - 13
Featured Speakers	15
Schedule at a Glance	16 - 17
Convention Center Map	18
Continuing Education Courses	20 - 21
Daily Program	22 - 49
Saturday, May 18.....	22
Sunday, May 19.....	23 - 29
Monday, May 20	30 - 39
Tuesday, May 21	40 - 49
Posters	50 - 55
Exhibit Hall Map, Exhibitor List	56 - 57
Dining at Oregon Convention Center	58





Download the MLA '24 App

App sponsored by  Wolters Kluwer

Stay up-to-date
with the latest in
the MLA '24 app



**SCAN TO
DOWNLOAD**



MLA Statement of Appropriate Conduct

Approved by the MLA Board of Directors - July 6, 2020

This statement applies to all Medical Library Association (MLA)-sponsored and officially recognized professional and educational activities, including, but not limited to, conferences, meetings, workshops, online forums, social media, continuing education, and all means of communication between members and nonmembers relating to MLA activities.

It applies to all MLA members, nonmembers, invited guests, speakers, moderators, instructors, exhibitors, staff, and all others who participate in an MLA activity or event.

1. Values and Beliefs

Believing that diversity, equity, and inclusion are the threads that strengthen the fabric of our association, MLA seeks to ensure that the following core values and professional behaviors are entwined throughout all its programs and services:

- an open, inclusive, and collaborative environment within the association in all its activities and events, and outside the profession;
- diversity, equity, and inclusion in professional practice, leadership of health sciences libraries, and information professionals;
- advancement and support of accessibility for all stakeholder groups; and irreproachable ethical standards (Code of Ethics for Health Sciences Librarianship) that call for health sciences librarians to conduct all professional relationships with courtesy and respect.

In MLA's effort to provide an environment of mutual human respect in which diverse participants may learn, network, and enjoy their interactions with colleagues, we recognize that we have a shared responsibility to create and sustain that environment for the benefit of all, consistent with these core values.

Diversity, Equity, and Inclusion

MLA interprets diversity, equity, and inclusion as:

- Diversity encompasses the ways that people are both alike and different, understanding, accepting, and valuing differences that include race and ethnicity, gender and gender identity, sexual orientation, socioeconomic

status, political beliefs, language, culture, nationality, age, ability status, and religion;

- equity takes differences into account to ensure fair and impartial processes and outcomes, and equal opportunity; and
- inclusion ensures that all individuals are treated fairly and respectfully; are intentionally valued for their distinctive skills, experiences, and perspectives; have equal access to resources and opportunities; feel a sense of belonging; and can contribute fully to the association's success.

MLA Commitment

MLA is committed to:

- ensuring that all individuals are treated fairly and respectfully; are intentionally valued for their distinctive skills, experiences, and perspectives, have quality access to resources and opportunities, feel a sense of belonging, and can contribute fully to MLA's success;
- providing a harassment-free environment for everyone, regardless of race and ethnicity, gender and gender identity, sexual orientation, socioeconomic status, political beliefs, language, culture, nationality, age, ability status, and religion; and
- protecting diversity, equity, inclusion, and the free expression of ideas.

Taken cumulatively, the values and beliefs delineated in MLA policy describe conduct based on a firm belief in the value of civil discourse and the free exploration of competing ideas and concepts—with a fundamental respect for the rights, dignity, and value of all individuals.

2. Behaviors

Speakers, moderators, leaders, and participants are asked to frame discussions as openly and inclusively as possible and to be aware of how language and tone of voice, behavior, or images may be perceived by others. In the context of MLA policy and the professional practices of librarianship:

- critical examination of beliefs and viewpoints does not, by itself, constitute hostile conduct or harassment; and
- the use of sexual imagery or language in the context of a professional discussion might not constitute hostile conduct or harassment.

At face-to-face meetings, all participants are expected to observe these rules and behaviors in all meeting venues, including online, and during meeting social events. Meeting participants seek to learn, network, and have fun. Please do so responsibly and with respect for the right of others to do likewise.

The following individual behaviors are encouraged:

- be respectful
- be direct and professional
- be inclusive and seek diverse perspectives
- understand and value different ideas and opinions
- appreciate and accommodate similarities and differences
- lead by example
- keep discussions within the scope of the activity
- maintain professional dialogue and tone on all MLA media communication channels



- exercise your right to distance yourself from the person or situation (e.g., if it is not meaningful, if you feel unsafe or threatened, or if you feel your message is not being heard)
- silence cell phones and other electronic devices (when applicable)
- be present and attentive during the activity, and avoid side conversations or participating in activities that may be distracting to others
- be prepared and well-informed (read materials; ensure your information is accurate; when in doubt, check first)
- be mindful that most activities such as webinars, forums, and social media are recorded.

The following individual behaviors are specifically prohibited:

- engaging in harassment or intimidation, including sexual harassment or intimidation, such as unwelcome sexual attention, stalking (verbal, physical, or virtual), or unsolicited physical contact
- yelling at or threatening anyone (verbal, physical, in print, or online)
- posting messages that are defamatory, abusive, profane, threatening, or offensive
- engaging in personal attacks
- engaging in disruptive behavior that intimidates, disenfranchises, interrupts (an event, activity, or process) by causing a disturbance, or threatens the safety of an individual
- posting illegal materials
- posting copyrighted material without first obtaining permission of the copyright holder.

Participants who are asked to stop disruptive, hostile, or harassing behavior are expected to comply immediately.

3. Reporting and Investigation

MLA is committed to ensure you feel comfortable in reporting inappropriate behavior you experience or observe. If possible, first seek out the person of authority in the related context (e.g., chair; board liaison or staff liaison, if a committee; chair, if domain hub or caucus; convener, if online discussion; meeting management or MLA staff, if at a physical meeting; etc.). This may be an effective way to address the behavior locally or in the moment.

Alternatively, contact either the MLA executive director, the MLA president, or the chair of the Diversity, Equity, and Inclusion Committee. This group of three (unless one or more individuals in the group are the subject of the inappropriate behavior) will lead the investigation, contact relevant individuals, gather all information needed, and take steps to resolve the situation with appropriate confidentiality.

Submit a report online.



4. Consequences and Resolution

Though all efforts will be made to seek a positive outcome where everyone can feel included and safe, incidents determined by MLA to violate MLA's code of conduct could result in one or more of the following consequences:

- being asked to stop their disruptive, hostile, or harassing behavior immediately
- being asked to make sincere efforts to increase awareness, such as participating in trainings about diversity, equity, and inclusion or conflict management
- being removed, without reimbursement, from face-to-face conferences, meetings, or webinars; if appropriate, event security or local law enforcement may be contacted
- being excluded from online forums or other activities
- no awarding of MLA continuing education (CE) or Academy of Health Information Professionals (AHIP) credit
- terminating MLA membership, without reimbursement
- other actions deemed appropriate by MLA and/or required by law
- if appropriate, a follow-up report will be made to individuals who report being harassed.



Welcome to Portland! 🌲🌲🌲

Dear Colleagues and Frolleagues

(friends who are also colleagues),

I am so excited to welcome all of you to MLA 2024: Stronger Together. For those of you attending in person, we are finally going to Portland, Oregon after our 2020 meeting was rescheduled. Thank you so much to the 2020 NPC and the 2024 NPC who worked to make this meeting a reality. This year's theme, "**Stronger Together**," focuses on how collaboration can have a positive impact in both medical librarianship and the broader health information communities. During this time of challenges and opportunities, it is important to remember what brings us together, what inspires us, and what we want to create for our future.

Speaking of looking towards the future, this year's conference will begin and end with discussion about AI. We will kick things off with the inaugural AI Summit which will focus on how health information is transforming with artificial intelligence. And we will end our conference with a presentation on "An MLA Year of AI." In the middle, we will honor our past with a twist on the traditional Janet Doe Lecture. This year, we have invited a panel of past lecturers to join us in a panel presentation. During this discussion, our esteemed colleagues will inspire us with their thoughts on how MLA's core values will help us shape the future of our association and our profession.

This year's meeting will inspire us all with the John P. McGovern Lecture, interactive sessions, papers, posters, immersion sessions, networking events, exhibit hall, and vendor presentations. Knowing that networking is vital to feeling connected to one another, you may notice that there is a food truck lunch scheduled on Sunday with no competing events as well as a communities lunch on Monday. Our virtual arrangements committee also has opportunities for online conference attendees to socialize.

Don't forget to say, "Happy Sesquicentennial, MLA!" While this is the 124th annual meeting of our association, we are finishing our celebration of 125 years of the Medical Library Association. Our association was officially founded on May 2, 1898. Like last year, we will have many opportunities to celebrate and reflect on our past.

Our colleagues come from different states, countries, backgrounds, and types of institutions, and they bring a wide variety of expertise. We truly are stronger together when we share our knowledge and experiences with one another. On behalf of MLA, I want to welcome all our attendees, presenters, exhibitors, and sponsors to connect at this year's conference. I look forward to seeing you online and in-person and thank you for all the hard work that you put into making our conference a success and our association a professional home.

Sincerely,



Amy E. Blevins

MLA President



Amy Blevins (MLA President, 2023/24) & Shannon D. Jones, AHIP, FMLA (MLA President, 2022/23)

NPC Cochairs' Welcome

It is with great pleasure that the National Planning Committee welcomes you to MLA '24!

In line with our theme, “**Stronger Together**,” this year’s conference is designed to unite us all in our collective journey toward advancements in medical librarianship. We are excited to explore the many ways collaboration and teamwork can fortify and enhance our work. This year marks our return to beautiful Portland, Oregon, and the culmination of MLA’s 125th anniversary. We are grateful to have such a gorgeous setting to commemorate and celebrate our coming together again.

We are thrilled to have Dr. Safiya Noble, author of the highly acclaimed *Algorithms of Oppression: How Search Engines Reinforce Racism*, as our 2024 John P. McGovern Lecturer. Her research focuses on the ways that digital media impacts our lives and intersects with issues of race, gender, culture, and technology. We look forward to her talk sparking conversations throughout the conference and beyond. The Janet Doe Lecture will look a little different this year as we are “Celebrating a Decade of Doe” with the opportunity to hear from Janet Doe lecturers from the past 10 years in a panel discussion of MLA’s Core Values.

In addition to the traditional paper presentations and lightning talks, the conference includes three focused symposia covering critical topics in our field: Collection Development & Resource Sharing, Leadership & Management, and Data Management & Services. We hope you enjoy engaging sessions in a variety of formats as we delve into data equity, inclusive library leadership, and how AI tools affect collection development, among other topics. We are also looking forward to our new poster session format late Monday afternoon, where all posters will be presented in a single session without any concurrent content.

This year’s conference features enhanced hybrid options, designed to ensure broader accessibility and inclusivity for all participants. Our Virtual Assistance Committee has worked hard to expand the virtual conference experience and create new ways for our community to come together, creating an engaging and enriching experience for everyone involved. As we convene to share knowledge, experiences, and innovative ideas, we hope this conference will serve as a platform for learning, networking, and having fun with our frolleagues!

Whether in-person or virtually, we welcome you to MLA '24!

Sincerely,



Elizabeth Kellermeyer, AHIP
2024 National Planning
Committee Cochair



Emily Vardell
2024 National Planning
Committee Cochair



Thank You Volunteer Leaders

2024 National Program Committee

Liz Kellermeyer, AHIP, Cochair
Emily Vardell, AHIP, Cochair
Brian L. Baker
Dawn Ellen Hackman, AHIP
Rosalind K. Lett
Sylvia McAphee
Jaclyn Morales, AHIP
David A. Nolfi, AHIP
Jenny Pierce
Ariel FitzGerald Pomputius, AHIP
Melissa L. Rethlefsen, AHIP
Ashley Michelle Thomas
Laura Zeigen, AHIP, Local Assistance Committee Cochair
Sola Whitehead, AHIP, Local Assistance Committee Cochair
Shalu Gillum, AHIP, Virtual Assistance Committee Chair
Amy Blevins, MLA Board of Directors Liaison

2024 Local Assistance Committee

Laura Zeigen, AHIP, Cochair
Sola Whitehead, AHIP, Cochair
Megan Benfield, AHIP
Frances Chu
Melinda Davies
Rian Debner, AHIP
Andrew S. Hamilton
Terry Ann Jankowski, AHIP, FMLA
Dolores Zegar Judkins, AHIP, FMLA
Jan Rene Kuebel-Hernandez, AHIP
Rose Relevo
Brandon J. Wilkinson

2024 Virtual Assistance Committee

Shalu Gillum, AHIP, Chair
Layla Heimlich, AHIP
Lea Leininger
Elizabeth R. Lorbeer, AHIP
Melanie E. Sorsby, AHIP
Candice Townsend, AHIP
Sara Beth Westall

2024 Special Program Committee: Collection Development & Resource Sharing

Iris Kovar-Gough, AHIP, Chair
Alan Backer
Megan Besaw Inman
Enrique Mares
Jen Ostrosky
Emily Singley
Nicole Theis-Mahon, AHIP

2024 Special Program Committee: Leadership & Management

Mark Berendsen, Chair
Ann Cullen
Elizabeth Downie
Mary Beth McAteer, AHIP
Jolene M. Miller, AHIP
Tim Peters
Jennifer C. Westrick, AHIP

2024 Special Program Committee: Data Management & Services

Mary Piorun, AHIP, Chair
Kristen Adams
Elena Azadbakht
Gabriele Hayden
Rebecca Reznik-Zellen
Jocelyn Swick-Jemison

Conference Planning Staff

Katelyn Arnold
Kevin Baliozian
Fiona Brueckman
Debra Cavanaugh
Kate Corcoran
Aubrey Dockery
Todd Eckman
Barry Grant
Tomi Gunn
Kate Hernandez
Hannah Jeon
Brooke Jordan
Stacy Kyle
Maria Lopez
Erin Orlandini
Kristi Salyards
Katarina Vercelli
Jim Westwood

General Information

Accessibility and Inclusion

Access to and within Oregon Convention Center

All MLA '24 sessions will be held at the Oregon Convention Center, 777 NE Martin Luther King Jr Blvd. All public areas, lobbies, exhibit halls, and meeting rooms in the convention center are accessible according to the Americans with Disabilities Act (ADA). The OCC provides service ramps to entrances and elevated areas, automatic doors, an array of passenger elevators, and restroom facilities, and directional signage at strategic locations throughout the building.

Animals are not permitted on the convention center grounds. This includes emotional support animals. Only service dogs or miniature horses trained to provide assistance to an individual with a disability, through a specific action, are allowed.

Onsite Accessibility Issues

Should you encounter an accessibility issue at MLA '24, please contact meeting staff at the Registration Center so they can resolve the issue.

Medical Services Stations and Nursing Mothers Areas

The emergency medical service station is located on the first floor of the OCC near the entrance of Hall A.

The OCC provides two Mamava nursing suites for our visitors. These private and secure suites are located near the A and E Meeting Rooms on Level 1, one of which is in the MLA Pre-Function space. This pod has power, seating, and a lockable door. You may also request a door code for entry from our receptionists in the Administration Office on Level 2 and by calling 503-235-7575.

In addition to the Mamava pod, MLA has set aside A101 which will be a keyed private space for nursing mothers. The key can be picked up and returned to the MLA Registration Center.

Please view the convention center maps in the printed program for the exact location.

All-User Restrooms

Family and all-user restrooms are also available in public areas of the Oregon Convention Center.

Wheelchair or Electric Scooter Needs

Attendees who require a wheelchair or electric scooter for use during the annual conference should indicate accessibility needs during the conference registration process. Staff will work with you to reserve your preferred mobility device during the conference.

If you have requested accommodations during the registration process, staff will be in touch with you ahead of your arrival to ensure access to your preferred mobility device; or please check in at the MLA '24 Registration Center in Pre-Function A.

Recharge Room | C120

Take some downtime to recharge your internal battery! Zone out, stretch, nap, meditate, walk a maze, color, work on a puzzle, rake some sand, or have another relaxing moment in this tech-free quiet room.

Hours

Sunday, May 19, 2024

7:00 a.m. – 7:00 p.m., pacific time

Monday, May 20, 2024

7:00 a.m. – 6:00 p.m., pacific time

Tuesday, May 21, 2024

7:00 a.m. – 3:00 p.m., pacific time



General Information

Lost and Found

Please bring any found items to the MLA '24 Registration Center in Pre-Function A.

Coat and Luggage Check

For those attendees who prefer to leave the conference directly from the convention center, a coat and luggage check will be available on Tuesday, May 21, 2024, in A109.

Transportation

The Oregon Convention Center (OCC) is within walking distance of all three hotels including the Hyatt Regency, the Hotel Eastlund and The DoubleTree.

For attendees looking to see Portland, the TriMet MAX light rail stops 300 times a day at the OCC front door, connecting riders to downtown, surrounding neighborhoods, the Oregon Zoo, and Portland International Airport.

Portland Streetcar's Central Loop stops at the OCC's Martin Luther King, Jr. (MLK) Lobby entrance every 15 minutes.

TriMet's Bus Line No. 6 also stops at the MLK Lobby entrance and provides access to downtown stops and outlying areas.

Parking at the Oregon Convention Center

Onsite parking is provided in the convention center's underground garage. You may enter the garage through either the NE Lloyd Blvd (P1) or NE First Avenue (P2) entrances. Clearance on the P1 Level is 7 feet; clearance on the P2 Level is 9 feet. The OCC has a total of 800 spaces. Garages open at 6:00 a.m., and standard parking rates are \$12 a day.

Registration Center and Pre-Function A

Sponsored by:  Wolters Kluwer

Registration Center Hours

Saturday, May 18, 2024

9:00 a.m. – 6:00 p.m., pacific time

Sunday, May 19, 2024

7:00 a.m. – 7:00 p.m., pacific time

Monday, May 20, 2024

7:00 a.m. – 6:00 p.m., pacific time

Tuesday, May 21, 2024

7:00 a.m. – 3:00 p.m., pacific time

Badge pickup

Your first stop for MLA '24 onsite should be the Registration Center in Pre-Function A to pick up your

- Meeting bag
- Badge
- Ribbons



Guests at MLA '24

Adult Guests

Adult guests may purchase a pass to the Hall of Exhibits at the MLA '24 Registration Center located in the Pre-Function A. If guests would like to attend programs, plenary sessions, or social events, they should purchase a full meeting registration.

Children

Are you attending MLA '24 with accompanying children? While we will do our best to accommodate the needs of child caregivers and attendees, please let us know during registration if you plan to attend MLA '24 with accompanying children.

- Children over 6 months must always be accompanied by a caregiver.
- Children under 6 months may attend under the care of a "baby-wearing" caregiver or in a stroller; for the safety of children and other attendees, stroller-age children must remain in strollers when in the OCC. Strollers are not allowed in the Exhibit Hall.
- We ask caregivers to, as necessary, step out of sessions to soothe children and mitigate any disturbance or minor interruption. If attending a session with a child, please find seating near an exit.
- A Mamava nursing pod is available in Pre-Function A in addition to a secondary nursing room in A101.
- A staff member will be in touch with you to understand other childcare needs you may have.

All accompanying children must have a registration and badge. Complimentary badges will be available at the MLA '24 Registration Center in Pre-Function A.

Children (continued)

For your convenience, we have identified the following childcare service that is available to you. To arrange for childcare service, registrants should contact provider directly:

NW Nannies

Rates start at \$25 per hour for 1 child. An extra \$2 per hour added for each additional sibling. For individual reservations, please contact 503-245-5288 or info@nwnannies.net.

Please note that MLA is not able to recommend this provider based on experience. This information is provided as a convenience to parents who may wish to arrange for childcare services while they are in Portland. MLA makes no claims regarding the services listed here. Parents are urged to address any questions or concerns directly with the provider.

Hall of Exhibits | Hall A

Hours

Sunday, May 19, 2024

5:30 – 7:30 p.m., pacific time
Welcome Reception

Monday, May 20, 2024

9:00 a.m. – Noon, pacific time
1:30 – 6:00 p.m., pacific time

Tuesday, May 21, 2024

9:00 a.m. – 1:30 p.m., pacific time

About Portland

Hospitality Center, Pre-Function A

Make the Local Assistance Committee (LAC) Hospitality Center your next stop for maps and information about local attractions. LAC members and other area experts will be on hand to answer questions. You are also encouraged to use the MLA '24 meeting website or app to connect with other registrants.

Be sure to ask for dining recommendations and check the official MLA '24 Dining Guide.



DINING GUIDE

Service Project

The LAC encourages you to support to Portland Street Medicine for the 2024 Local Service Project. All donations are tax deductible.

Portland Street Medicine is a coalition of volunteer medical providers, social workers, care coordinators, and concerned neighbors dedicated to reaching our unhoused community members. Simply put, their mission is to improve the health and wellbeing of our unhoused neighbors through trust, relationship, and care.



**DONATE
HERE**

Membership Services

MLA Career Center and Member Resource Room

For your convenience, a photocopier, Windows-based computers, printer and office supplies will be available for association business on a first come first served basis.

Hours

Sunday, May 19, 2024

10:30 a.m. – 5:00 p.m., pacific time

Monday, May 20, 2024

9:00 a.m. – 5:00 p.m., pacific time

Tuesday, May 21, 2024

9:00 a.m. – 1:00 p.m., pacific time

Resume Clinic

Presented by the Professional Recruitment and Retention Committee

Walk-ins welcome! Come in to have an experienced colleague review your cover letter, resume, or CV, help you convert a resume to a CV, conduct a mock interview, give career advice or just talk through the job search. You'll have up to 30 minutes with a reviewer.

Job Placement Service

Find your next job or advertise your open job opportunities at MLA '24! Stop by to submit your resume or job opportunity for employers and candidates to view, then reserve space to meet during the conference if possible.

MLA Connections Booth

Stop by the MLA booth in the Hall of Exhibits to learn more about MLA, member benefits, participate in daily free membership and AHIP raffles, take a fun pic at the photobooth, learn about the history of MLA, speak out in response to the question of the day, view memorabilia in celebration of MLA's 125th anniversary and more!

Photobooth sponsored by



Meeting Experience

Mobile App

The MLA '24 mobile app is available in the App Store and Google Play Store. The mobile app allows you to view the schedule of events, abstracts, and presentation details in real time. You can also view speaker photos, biographies, video, audio presentations, handouts, slides, list of attendees, and exhibitors. Contact other attendees with in-app messaging. All registrants (virtual and in-person) can use the app to chat and ask questions during live-cast sessions when the audience response system (ARS) is available.



**DOWNLOAD
THE APP**

Online Planner and Content Website

Sponsored by:  Wolters Kluwer

MLA's 2024 Online Planner and Content Website, hosted on Pheedloop, allows you to:

- Access the online planner to see the daily schedule, speakers, and to connect with other attendees
- View virtual and on-demand sessions and posters
- Chat with your onsite and virtual colleagues as you view streamed, on-demand, and virtual-only sessions
- Access content posted by presenters online post-conference

You must be logged in to view content. If you have any questions or trouble accessing the Online Planner, please contact MLA Headquarters.



Take Your Career to the Next Level with MLA Specializations



Systematic Review Services Specialization

Now you can gain the skills to play a central role in review projects. Learn the fundamentals of systematic reviews and how to collaborate with teams to implement search strategies, negotiate recognition for your contribution, develop effective and replicable search strategies, and more.



Consumer Health Information Specialization

Get training in providing health information services to consumers while providing skills and knowledge needed to become a confident, expert provider of health information to your community.



Data Services Specialization

Boost your career with training in providing quality data services to researchers and students. Develop skills in managing research data, providing guidance on data management best practices, appraising data collection practices, and developing data services..

Achieve a new level of expertise in one of these health information fields. Each program requires the completion of an approved curriculum of courses. Courses and other educational offerings are MLA-approved and developed for each specialization.

Visit mlanet.org



Featured Speakers

JOHN P. MCGOVERN LECTURE

Dr. Safiya Noble



Dr. Safiya U. Noble is an internet studies scholar and professor of Gender Studies and African American Studies at the University of California, Los Angeles (UCLA) where she serves as the faculty director of the Center on Race & Digital Justice and co-director of the Minderoo Initiative on Tech & Power at the UCLA Center for Critical Internet Inquiry (C2i2).

She is the author of a best-selling book on racist and sexist algorithmic bias in commercial search engines, entitled *Algorithms of Oppression: How Search Engines Reinforce Racism* (NYU Press), which has been widely-reviewed in scholarly and popular publications.

Professor Noble is a research associate at the Oxford Internet Institute at the University of Oxford where she was a commissioner on the Oxford Commission on AI & Good Governance (OxCAIGG). In 2021, she was recognized as a MacArthur Foundation Fellow for her ground-breaking work on algorithmic discrimination. In 2022, she was recognized as the inaugural NAACP-Archewell Digital Civil Rights Award recipient. She is a chartering member of the International Panel on the Information Environment and interim director of the UCLA DataX Initiative.

Dr. Noble is a board member of the Cyber Civil Rights Initiative, serving those vulnerable to online harassment, and the Joint Center for Political and Economic Studies, the nation's oldest Black think tank.

JANET DOE LECTURE

A Decade of Doe Lecturers

Being selected to do the Janet Doe Lecture is one of MLA's greatest honors and for the lecturer, one of the scariest and most intimidating professional achievements. Doe Lecturers have 14 months to develop a lecture based on "a broad perspective of medical librarianship" and must "possess the qualities to communicate their experiences and ideas articulately." They can talk about anything they want provided it is about medical librarianship. That freedom can be challenging. Every Doe Lecturer goes through their own private hell when defining and refining their lecture...while working on being articulate.

Imagine if you will, a gathering of the most recent Doe Lecturers on one stage (including virtually) for one time only! During this special event celebrating the 125th anniversary of our association, the Doe Lecturers have been asked to share their thoughts on how MLA's Values as an association will help sustain our impact and thrive as health information professionals in the decades to come. Now, most Doe Lecturers look to the past for their lectures – leadership, inclusion, oral histories, advocacy, medical library culture and context have all been the focus of the lectures. There were even lectures referencing sharks and coral reefs. Now they have been asked to dust off their crystal balls and look into the future.

Are you wondering how this will all turn out? Join this special Doe Lecture and then stop at the MLA Booth afterwards to continue the discussion.



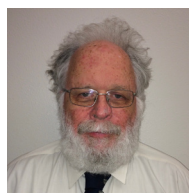
Barbara A. Epstein, AHIP, FMLA



Sandra G. Franklin, AHIP, FMLA



Michelle Kraft, AHIP, FMLA



Michael R. Kronenfeld, AHIP, FMLA



Margaret Moylan Bandy, AHIP, FMLA



Gerald J. Perry, AHIP, FMLA



Elaine Russo Martin, FMLA



Chris Shaffer, AHIP



M.J. Tooley, AHIP, FMLA



Schedule at a Glance

(Local Pacific Time)

7:00 :30 8:00 :30 9:00 :30 10:00 :30 11:00 :30 12:00 pm

Saturday, May 18

On-demand Virtual Content Available											
MLA Board Meeting											

Sunday, May 19

On-demand Virtual Content Available											
MLA New Members Welcome Breakfast			Opening & Presidential Address			Contributed Content Sessions			Food Tr		
						Symposia Content					

Monday, May 20

On-demand Virtual Content Available											
Exhibitor Sunrise Seminars			Hall of Exhibits & Technology Showcases						Exhibi & Learn Exhibi		
First Sip of the Day			Contributed Content Sessions			John P. McGovern Lecture			Comm Lunch		
						Symposia Content					

Tuesday, May 21

On-demand Virtual Content Available											
Exhibitor Sunrise Seminars			Hall of Exhibits & Technology Showcases						Exhibi & Learn Exhibi		
First Sip of the Day			Contributed Content Sessions			NLM Update			Lunch		
						Symposia Content					



Some content available On-demand
 Live Content Sessions (select sessions will be livestreamed; to be announced)
 Livestreamed
 Exhibitor Focused (in person)

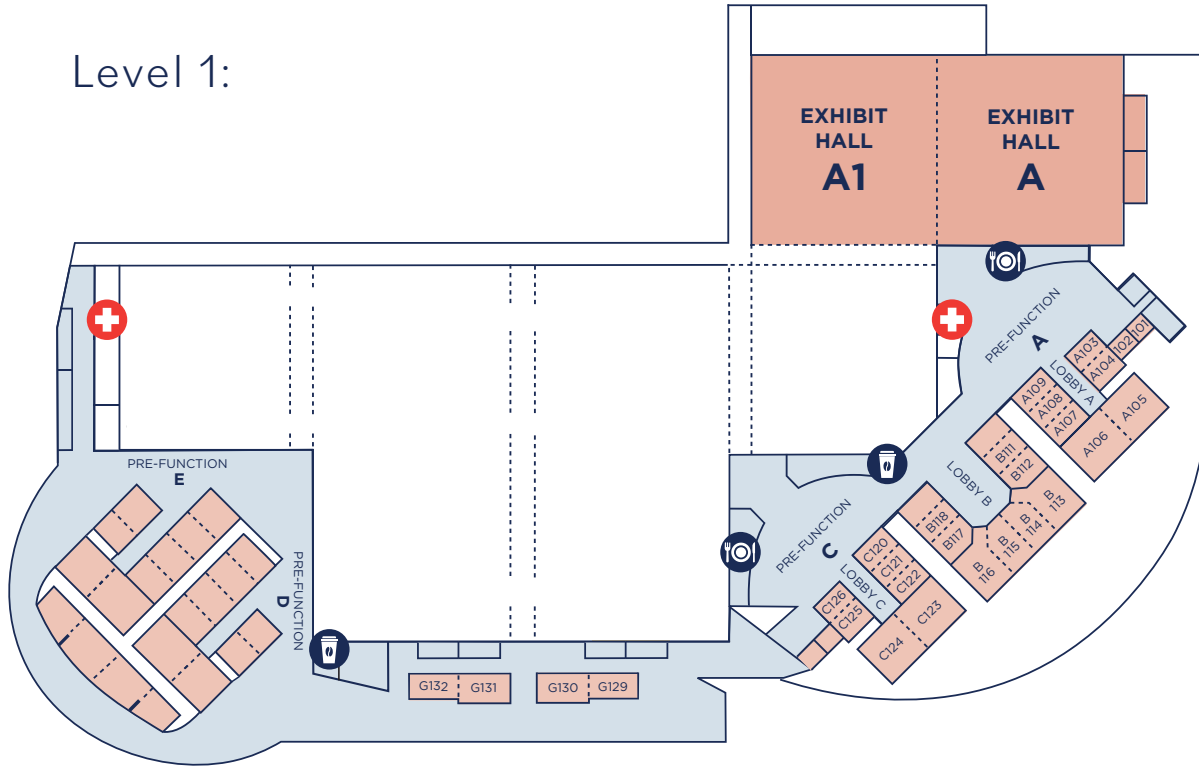
:30 1:00 :30 2:00 :30 3:00 :30 4:00 :30 5:00 :30 6:00 :30 7:00 :30 8:00 :30

												Continuing Education Courses				
												AI Summit				
Trucks Lunch	Contributed Content Sessions		Networking		MLA Leaders and Int'l Visitor Reception		Welcome Reception & Opening of the Hall of Exhibits									
	Symposia Content															
Trucks Lunch; Hall of Exhibits CLOSED	Hall of Exhibits & Technology Showcases						Evening Vendor Events									
Trucks Lunch	Contributed Content Sessions		Janet Doe Panel		Poster Session in Hall of Exhibits											
	Symposia Content															
Trucks Lunch; Hall of Exhibits OPEN	Closing: An MLA Year of AI + Final Anniversary Celebration															
Trucks Lunch	Contributed Content Sessions															
	Symposia Content															

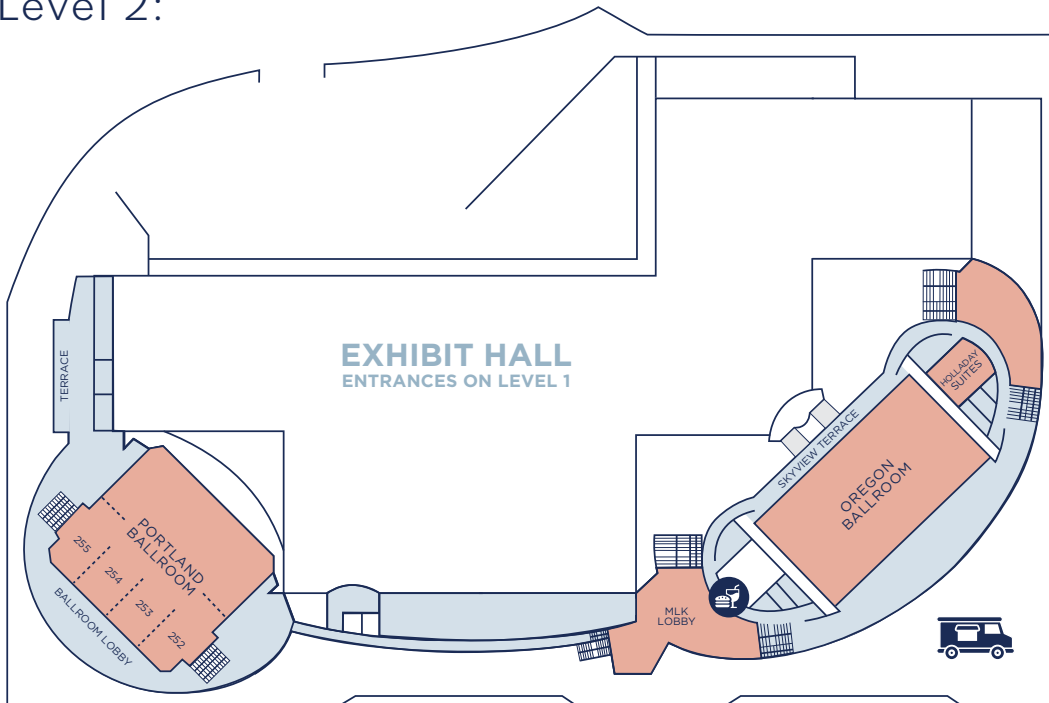


Oregon Convention Center Maps

Level 1:



Level 2:





FOR A LIMITED TIME:



MLA CE PASSPORT 2024

MAKE YOUR PROFESSIONAL JOURNEY MORE AFFORDABLE

Purchase your individual MLA CE Passport by **June 30, 2024** to get these savings:

	CE Passport	80 MLA Webinars	19 Self-Paced Course	Savings
Members	\$660	\$5,200	\$1,615	\$6,115
Non-Members	\$860	\$6,800	\$2,185	\$8,125

Share the news with your non-member colleagues: You do NOT need to be an MLA member to participate! (But members save more!)

Great news for institutions

There's incredible savings for Institutions, too. Give your staff access to hundreds of hours of MLA CE and save your organizations thousands of dollars. (Users do not have to be MLA members to use the passport.)

Institutional MLA CE Passport Cost			Savings*	
# Users	Inst. Member Price	Non-member Price	Member	Non-Member
Up to 5 Users	\$2,805	\$3,650	15%	15%
Up to 10 Users	\$5,280	\$6,865	20%	20%
Up to 15 Users	\$7,425	\$9,655	25%	25%
Up to 20 Users	\$9,240	\$12,015	30%	30%

*Based on individual costs

All MLA education offerings are designed to develop skills in an MLA professional competency. Our live and recorded webinars are presented by subject matter experts. Our self-paced courses place you in a realistic situation in which you must solve problems and complete tasks to develop your knowledge and skills.

The deadline to purchase a CE Passport is **June 30, 2024!**

MLANET.org/CEPassport



Continuing Education Courses

Don't miss out on in-person learning opportunities at MLA '24! All courses will take place on Saturday, May 18, 2024 in Portland, Oregon. Courses are not available for virtual-only attendees.

CE100

Essential Searching Skills for Librarians on Systematic Review Teams

1:00 p.m. - 6:00 p.m. | G131

\$395 MLA Members | \$510 Nonmembers

Attendance maximum: 25

If you want to be part of a systematic review team—or if you already do systematic review searches and want to hone your skills—this is the searching course for you! The course will take you through the systematic review searching process, from confirming the need for a review and identifying appropriate databases to creating search strategies and documenting and reporting searches using PRISMA-S. PubMed is the primary database used in the course.

The heart of the course is developing an extensive, effective, systematic, translatable, and replicable search strategy to address a research question. You'll receive feedback on your search strategies during the live session and after the session via Slack.

This course is required for the Level I of the Systematic Review Searching Specialization.

Important Note: You'll need to bring a laptop computer with WiFi capability to participate in the course.

Instructors: **Carrie Price, Health Professions Librarian, Albert S. Cook Library, Towson University, Towson, MD; David Farris, Research Services Librarian, Research Medical Library, University of Texas, MD Anderson Cancer Center–Houston; Rachael Lebo, Clinical Services Librarian, Wegner Health Sciences Library, University of South Dakota–Sioux Falls.**

CE200

Master Data Cleaning and Wrangling with OpenRefine and Python

1:00 p.m. - 5:00 p.m. | G130

\$295 Members | \$380 Nonmembers

Attendance maximum: 25

If you begin this course with no understanding of OpenRefine or Python or if you know some Python, in just four hours you'll leave with skills in cleaning, analyzing, and displaying data and supporting researchers in working with their data and writing DMSPs that will enable you to expand your career options and increase your value in your workplace.

Paige Scudder, an experienced Python coder and instructor for a very successful MLA virtual course on Python and data visualization will be your guide to using two powerful, open source, and user-friendly tools, OpenRefine and Python, to unlock the full potential of a dataset. You'll learn to use OpenRefine to clean and transform messy data and to seamlessly integrate your clean data with Python to perform statistical analyses and create visualizations.

This course is an approved elective for Level II of the Data Services Specialization.

Important Note: You'll need to bring a laptop computer with WiFi capability to participate in the course.

Instructor: **Paige Scudder, Research and Instruction Librarian, Tufts Hirsh Health Sciences Library, Boston, MA.**



CE201

Collections Budgeting: It's More Than Spreadsheets

1:00 p.m. - 3:00 p.m. | G129

\$155 Members | \$200 Nonmembers

Attendance maximum: 25

If you are new to collections budgeting, you may feel overwhelmed by the challenges of the high cost of resources, the multitude of purchasing and subscription options, and the reality of never having enough funding. And, because libraries are institutional cost centers, your budget may be under increased scrutiny. You may find yourself needing to advocate not only for your budget, but also for your skills in being able to make good financial choices on behalf of your institution.

Susan Kendall, who manages the collections budget of a large university library and is the editor of *Health Sciences Collection Management for the Twenty First Century*, will be your guide to navigating both the financial and vitally important non-financial aspects of collections budget management.

You'll leave the course feeling supported in your budgeting challenges and with strategies and ideas for dealing with a variety of budget situations, prepared to make a plan for advocating for your collections budget, and greater confidence in your ability to talk about your budget with key stakeholders.

Upon registering for this course, you will receive a code entitling you to a 30% discount on Susan's edited volume, *Health Sciences Collection Management for the Twenty First Century*.

Instructor: Susan K. Kendall, AHIP, Head, Collections Strategies and Copyright Librarian, Michigan State University Libraries, East Lansing, MI.

CE400

The Joy of Project Management! Managing All Projects, Large and Small

1:00 p.m. - 4:00 p.m. | G132

\$195 Members | \$255 Nonmembers

Attendance maximum: 25

The marvelous thing about project management skills is that they are extraordinarily valuable in many ways. They allow you to be more effective in your work and personal life. They demonstrate leadership skills that can lead to your promotion. And they earn you gratitude from everyone on a project you manage.

Janet Crum and Elisa Cortez, trained and experienced project management experts, will be your guides to developing a project management mindset and acquiring project management skills. You'll learn through presentation, demonstration, discussion, and small group work in which you'll practice with tools and techniques presented in the course to create a plan for a small project.

You'll leave the course with know-how and confidence that will enable you to become more effective in any library role from entry level to director and in your life and able to spread the joy of project management to all you work with and for.

Instructors: Janet Crum, Director, Health Sciences Library, University of Arizona-Tucson; and Elisa Cortez, AHIP, Medical Education and Clinical Outreach Librarian, University of California-Riverside.



Saturday, May 18

9:00 a.m. - 6:00 p.m.

Registration Center | Prefunction A

Sponsored by:  Wolters Kluwer

Nursing Room | A101

Recharge Room | C120

1:00 - 6:00 p.m.

CE100 - Essential Searching Skills for Librarians on Systematic Review Teams

G131

CE200 - Master Data Cleaning and Wrangling with OpenRefine and Python

G130

CE201 - Collections Budgeting: It's More than Spreadsheets

G129

CE400 - The Joy of Project Management! Managing All Projects, Large and Small

G132

5:00 - 6:00 p.m.

AI Summit Reception | B110

Pre-Registration Required

Sponsored by **ELSEVIER**

2:00 - 5:00 p.m.

Speaker Ready Room | Holladay Suites



AI SUMMIT

Why AI? Transforming the Health Information Profession

Sponsored by **ELSEVIER**

Saturday, May 18, 2024 | 1:00 – 6:00 p.m., pacific time | Room A106

Registration is separate for this event.

Health information is transforming. This summit is designed to provide planners and leaders in the health information AI space with the knowledge and insights needed to address the rise of artificial intelligence in all aspects of library operations - from hiring and training staff and working with administration to ensure budgets adequate to keep libraries current with AI, to integrating AI into library programs and services such as patient support, collection development, research, & clinical support to patient caregivers.

- Health Information Professionals will actively engage in discussions, sharing their experiences and challenges faced in their respective institutions
- Vendors to Health Libraries will have the opportunity to showcase their AI planning, technologies, and services relevant to healthcare and health information management and how they can partner with health information professionals to seamlessly integrate AI-enabled products in the research and clinical space
- The National Library of Medicine (NLM) will share expert insights on issues related to national and international standards, data management practices, and research trends in AI, and provide updates on NLM's initiatives, research findings, and future directions with AI.

This is a high-level strategic summit for AI leaders and planners, not intended to be a session on using or choosing particular tools. If you're a strategic thinker and want to impact the future of the profession, this summit is for you!

7:00 a.m. - 7:00 p.m.

Registration Center | Prefunction A

Sponsored by:  Wolters Kluwer

Nursing Room | A101

Recharge Room | C120

7:30 - 8:45 a.m.

MLA New Member and First-Time Attendee Program and Breakfast | B115-116

(by invitation only)

Sponsored by:  Wolters Kluwer

9:00 - 10:15 a.m.

**PLENARY:
MLA '24 Opening Session
& Presidential Address**

Amy Blevins, MLA President

Oregon Ballroom 201 - 204

Join MLA President **Amy Blevins** along with National Program Committee (NPC) Cochairs **Elizabeth Kellermeyer** and **Emily Vardell**, as they welcome you to MLA '24 in Portland and virtually!

They will provide an overview of MLA '24, recognize MLA's most prestigious awards, and acknowledge MLA sponsors.

This session will be livestreamed for virtual attendees and available post conference on demand.

10:30 - 11:45 a.m.

IMMERSION SESSIONS

Innovation & Research Practice | A105

Bringing the New MLA Research Agenda to Life... Together

Sponsor: Research Caucus

Members of the Research Agenda Committee (RAC) will describe the MLA Research Agenda process and unveil the results of the latest Delphi survey. By the time of this session, the process will have resulted in a consensus list of the most important and answerable questions facing our profession. Following the presentation of the methods and results of the surveys, facilitators made up of members of the RAC, will engage with and encourage participants to collaborate with other attendees to develop research ideas, brainstorm potential designs, and network for future collaboration. The session will use a roundtable format to group participants interested in similar questions and energize them to do research of interest to the profession.

Jonathan Eldredge, AHIP-D, FMLA, Marie Ascher, Karen Heskett, Heather Holmes, AHIP, and Margaret Hoogland

Education | A107-108

Teaching for the Non-Teacher: Creating a Lesson Plan

Sponsor: Medical Library Education Caucus

Medical librarians play a vital role in supporting education and research in the healthcare field, yet many may not have had formal teacher training. In this session, participants will learn how to communicate with faculty to ensure clarity of scope, identify various factors, including the location or setting, the class participants, time allotted and more, that need to be considered prior to the actual instruction session, and create a lesson plan. Through an interactive lecture and working groups, participants will leave this session equipped with newfound teaching skills, advanced communication techniques, and a practical understanding of how lesson plans can transform their instructional sessions.

Amy Houck

Professionalism & Leadership | C123

Ladder or Lattice? Redefining Career Success Based on Your Values

Sponsors: Leadership & Management Caucus and Osteopathic Caucus

Is the only path to success in librarianship climbing up the career ladder from entry level to middle manager to director? What other options may exist to find fulfillment and satisfaction in your career than striving to move up? This session will cover strategies librarians can use to identify and align their personal and professional values to define their own version of success.

Elizabeth Whipple, AHIP, Beverly Murphy, AHIP, FMLA, Rich McIntyre Jr., and Molly Montgomery



10:30 a.m. - 11:45 a.m.

LIGHTNING TALKS 1 | C124

Connecting in Context: Situating Online Library Instruction within the Research Lifecycle

Hope Kelly and Talicia Tarver

Case-Based Learning Enhances Engagement, Critical Thinking and Motivation

NEW VOICES

Anna Liss Jacobsen

Entrustable Professional Activities (EPAs) Assessment in US Undergraduate Medical Education: Initial Results from a Scoping Review

Laura Zeigen, Katie Hoskins, Heidi Reis, AHIP, and Margaret Hoogland

Fostering Future Librarians: Using Moodle to Transform Internships

Abby Dowd, Darlene Kaskie, Annisija Hunter, and Erica Lake, AHIP

Health Professions Students' Use of Generative AI Applications

Amy Baldwin, Edwin Sperr, AHIP, and Emily Harris

Historical Cadaver Ledgers as Valuable Chronicles of Cadaver Use in Early Medical Education

NEW VOICES

Heather Harrison and Lori Fitterling

Reaching More Users by Repurposing Instructional Session Content through LibGuides

Rob Wright

Using a Practice Search Set to Teach Students Advanced Searching for Integrative Reviews

Lynn Warner

A Scholarly Inquiry into the Implications of Terror Management Theory for Health Information Services

NEW VOICES

Dasha Maye

Inclusive Information Literacy Education Enhances Digital Freedom in Black Diasporic Communities

DEI

Bethany McGowan, AHIP

Our Stories, Our Queries, Our Health: Health Information Seeking Behavior in the Context of Blackness

NEW VOICES **DEI**

Dev Wilder

Online Instruction in Publishing Academic Research for an Invested Student Population

Heather Brown

PAPER SESSIONS

Mixed Domains 1 | B111-112

The Library Value in Louisiana State University Health Shreveport Grant Associated Publication Citations

Julia Esparza, AHIP, FMLA, Montie' Dobbins, AHIP, Ava Pollard, Elliott Freeman, Justin Smith, Leah Bryant, Madison Coleman, and Prerana Ramesh

Collaboration in Cost-Sharing: Establishing Good Foundations for Long-Term Partnerships

NEW VOICES

Laura Schwartz and Zemirah Ngow, AHIP-S

Expert-Recommended Tasks for Hospital Librarians during a Healthcare System Merger or Acquisition: An E-delphi Consensus Statement

Jaclyn Morales, AHIP-D and Stacy Posillico, AHIP-D

Academic and Hospital Libraries: Stronger Together with Shared Resources

Catisha Benjamin, AHIP, Emily Petersen, Ruby Nugent, Yumin Jiang, Ellie Svoboda, AHIP, Marie St. Pierre, AHIP, Melissa De Santis, AHIP, Liz Kellermeyer, AHIP, Michelle Schonken, AHIP, Jerry Carlson, AHIP, Ben Harnke, and Kristen DeSanto, AHIP

Building a Consensus for Tracking the Impact of Libraries: A Delphi Study

Gwen Wilson, AHIP

Information Services 1 | B117-118

An Empirical Study Evaluating ChatGPT's Performance in Generating Search Strategies for Systematic Reviews

Fei Yu, Rebecca Carlson, AHIP, and Heather Kincaide

Building a Stronger Systematic Review Service One Intervention at a Time

Jill Deaver, Rebecca Billings, AHIP, and Emma O'Hagan, AHIP

"Do I really need to work with a Librarian?": Exploring Reporting & Reproducibility of Comprehensive Reviews Published on an Academic Medical Campus

Ben Harnke, Christi Piper, AHIP, Kristen DeSanto, AHIP, Hannah Pollard, and Ellie Svoboda, AHIP



10:30 a.m. - 11:45 a.m.

PAPER SESSIONS

Information Services 1, continued | B117-118

Database Usage Patterns in Existing Systematic, Scoping, and Rapid Reviews

Jennifer Westrick, AHIP

Professionalism & Leadership 1 | C121-122

This Is How We Do It: Tenure & Promotion in Academic Health Sciences Libraries

Erin Reardon, AHIP

Building a Stronger MLA Together: Analyzing Member Engagement with MLA Caucuses

Kimberly Powell, Michelle Knecht, AHIP, Rachel Lane Walden, and Rachel Whitney, AHIP

Health Sciences Cancellations: Lessons Learned

NEW VOICES

Leslie Gascon, AHIP

Health Equity & Global Health 1 | C125-126

Advancing Digital Equity in Rural Agricultural Communities: An Applied Research Project

NEW VOICES **DEI**

Jamie Bloss, AHIP, Roger Russell, Leslie Cofie, and Mary Roby

The Health Sciences Library's Role in Embedding Family Resource Centers in Federally Qualified Health Centers

DEI

Rebecca Birr, AHIP and April Aguiñaga, AHIP

Strategic Planning for Data Equity in a Department of Public Health: Challenges and Opportunities

DEI

Pam Lough

The Power of Networking: Creating a Stronger Medical Librarian Community in Uganda

NEW VOICES **DEI**

Onan Mulumba

Seeking Solutions for Global Challenges: Furthering Global Librarianship with a UN SDG-Aligned Research Project

DEI

Bethany McGowan, AHIP

Virtual Papers 1

Building a Research Data Services Program: Lessons in Community and Identity

NEW VOICES

Carolyn Dennison, AHIP and Jonathan Young

Decoding the Misinformation – Legislation Pipeline: How Misinformation and Legislation Reproduce Harm and What Librarians Can Do about It

DEI

Catherine Lockmiller

Evaluation of Assessment Tools Used for Judging the Quality of Online Patient Educational Information on Cardiovascular Diseases

NEW VOICES **DEI**

Amy Lin and Misa Mi

Evaluating Tools/Instruments for Assessing YouTube Videos on Surgical Procedures for Patient/Health Consumer Education: A Systematic Review

NEW VOICES

Amy Lin, Manasa Pavuloori, and Misa Mi

A Qualitative Mixed Methods Exploratory Assessment of the Role of Alabama's Public Libraries to Address the Opioid Crises

Bharat Mehra and Misha Viehouser



10:30 a.m. - 11:45 a.m.

SYMPOSIA

Collections Development Symposium | A106

Getting to Open: Everything You Need to Know about Crafting Open Access Agreements

Starting open access publishing agreements can be overwhelming. This session offers a rare opportunity to learn from both the librarian and publisher sides how to effectively craft open access agreements. Our presenters, Susan Kendall and Kathi Carlisle Fountain are experienced negotiators of Read and Publish agreements. They will walk you through defining your institution's priorities and needs, the kinds of agreements that are available, and concerns to anticipate from publishers. You'll leave the session with a checklist of points that you and a publisher representative can discuss and confidence that you can choose or collaboratively craft an agreement that makes sense for both parties.

***Kathi Carlisle Fountain, MSLS**, is the Regional Sales Manager, West for Oxford University Press (OUP), in which capacity she pursues collaborations with librarians, negotiates Read & Publish agreements, and serves as the "voice of the customer" within OUP. OUP has a growing number of active customized R&P agreements with libraries in a range of institutions, from large research universities to liberal arts colleges.*

***Susan K. Kendall, PhD, MS(LIS)**, is the Head of Collections Strategies and Copyright Librarian at the Michigan State University Libraries where she allocates and manages collections expenditures, negotiates with publishers, and develops a cohesive strategy for funding and supporting traditional and open access collections. She serves on the editorial board of Collections Management and is the editor of Health Sciences Collection Management for the Twenty First Century.*

Leadership & Management Symposium | B113-114 | Livestreamed

Inclusive Library Leadership: Empathy, Care, and Compassion as Leadership Strengths

In this interactive session for current and aspiring leaders and managers, you'll learn how you can center empathy, care, and compassion in your formal and informal leadership roles. Annie Bélanger, a passionate and experienced disability and inclusivity advocate, will introduce you to inclusive library leadership, its definitions, and the traits and practices of inclusive leaders. You'll begin to develop your own inclusive leadership approach and implement inclusive and equity-minded practices in your work. You'll leave with tools and resources you can use to continue your growth as an inclusive leader.

***Annie Bélanger, MLIS**, is the Dean of University Libraries, Grand Valley State University. She is the lead for ACRL's Inclusive Library Leadership subcommittee and the Board President for Disability Advocates of Kent County. Her research focuses on human-centered, inclusive leadership and skills development for library workforces. Being an accessibility and inclusion advocate and her experiences in academic, corporate, public libraries, and government settings define her career. Annie is Québécoise and disabled.*

10:30 a.m. - 5:00 p.m.

MLA Career Center, Member Resource Room, and Speaker Ready Room | Holladay Suites

11:45 a.m. - Noon

Transition Break

Noon - 1:15 p.m.

Food Trucks Lunch | North Plaza

Line of Portland Food Trucks will be available to purchase lunch and enjoy some local cuisine.

1:30 - 2:45 p.m.

IMMERSION SESSIONS

Information Services | A105

Novel Librarian Collaborations: Stronger Together

Sponsors: Hospital Library Caucus & Research Caucus

Join us for a lively discussion on topics of interest with your fellow librarian collaborators! The Hospital Library Caucus polled members for their areas of interest which were then grouped into eight topics. Attendees will join a topic-of-interest table to discuss their collaborative work or describe their interest in learning more about the topic. Each table will synthesize contributed ideas to develop a collaborative project idea, or research question, to present to the wider group.

Andrea Harrow, AHIP-D, Sydni Abrahamsen, AHIP, Cecilia Railey, AHIP-D, Basia Delawska-Elliott, AHIP, Lindsay Blake, AHIP, Caroline Marshall, AHIP, Michelle Bass, AHIP, Michelle Kraft, AHIP, FMLA, and Ellen Aaronson, AHIP



1:30 - 2:45 p.m.

IMMERSION SESSIONS**Professionalism & Leadership | A107-108**

Creating Community: Librarians Growing Stronger Together in Communities of Practice

DEI

Sponsors: African American Medical Librarians Alliance, Northwest Arkansas Library Association, Early Career Librarians Initiative

Join us for lightning talks on cultivating community amongst health sciences librarians. Three groups will be represented: one formed based on racial identity, a local-created group based on geography, and a group focused on early career support.

Kay Strahan, AHIP, Shannon Jones, AHIP, FMLA, Tamara Nelson, AHIP, and Sandra Desjardins

Education | C123

Designing Health Sciences Library Instruction for Scalability

Health Sciences Libraries are responsible for meeting the diverse information needs of many different user groups such as Medical Students, Clinicians, and Researchers. We often find ourselves teaching similar content across different modalities and at different levels of expertise. This immersion session will introduce approaches to intentional design of health sciences library instruction resources for adaptability and scalability, using examples from several different cases. Participants will have the opportunity to develop their own scalable instruction plans.

Caitlin Plovnick, Gregory Laynor, Justin de la Cruz, and Juliana Magro

LIGHTNING TALKS 2 | C124

A Systematic Approach to Review Services

Emme Lopez, AHIP and Margaret Foster, AHIP

Adapting a Systematic Review Service for a Two-Person Reference Department

Elizabeth Huggins and Jonna Peterson, AHIP

Artificial Intelligence: Your Library Event Planning Assistant

Boglarka Huddleston, Colleen Cuddy, and Samantha Willairat

Defining Our Scope: Eliminating “Service Creep” in Library Systematic Review Support Services

Jenessa McElfresh, AHIP

Examining Institutional Evidence Synthesis Publications to Inform Outreach & Provision of Service for an Academic Library’s Evidence Synthesis Service

NEW VOICES

Philip Espinola Coombs

Marketing with AI: Creating a Marketing Team Prompt Library

Amanda Woodward and Sonam Soni

Stronger Together: Librarian Utilization in Systematic Reviews and Meta-Analyses at a Multi-site Academic Medical Center

Diana Almader-Douglas, AHIP, and Ellen Aaronson, AHIP

Using Find & Replace to Speed Up Translation

Eden Kinzel

What to Do When the SR Team Is at Capacity: Grab a Number, Get in Line, and Learn SR Methodology

Lydia Howes, AHIP and Tallie Casucci

Medical Library Bioinformatics Research Reproducibility Service

NEW VOICES

Mengrui Zhang, Sarah Ben Maamar, and Terrie Wheeler

PAPER SESSIONS

Education 1 | B111-112

Assessing Reproducibility among Recent Trainees

Fred LaPolla and Robin Champieux

Using Principle-Based Instruction to Overcome Challenges in Teaching Systematic Review Methods across Disciplines: A Workshop Case Study

NEW VOICES

Cozette Comer and Jackson Hoch

No Bones about It: Developing Stronger Anatomical Model Collections Together

Stefanie Lapka, AHIP, Leonard Martin, and Rachel Helbing, AHIP

There’s Strength in Numbers: Evaluation of a Cohort Internship Program for Data Librarianship

DEI

Alisa Surkis, Peace Ossom, AHIP, Erika Martinez, and Verónica Hoyo



1:30 - 2:45 p.m.

PAPER SESSIONS

Innovation & Research Practice 1 | B117-118

The 100 Top-Cited Articles in Osteopathic Medical Education: A Bibliometric Analysis

Hal Bright, AHIP, Lori Fitterling, Sloane Kelley, Ying-Fang Wang, and Kyle Robinson

Influence from eHealth Literacy and Two Types of Online Health Information Seeking Behaviors on Health Behaviors among Diabetic Patients

NEW VOICES

Miriam Matteson and Yue Ming

Beyond Traditional Publication Metrics: Expanding Impact Measurement of Librarian Co-authored Publications Using Altmetrics

Fei Yu, Rebecca Carlson, AHIP and Emily Jones, AHIP

Data Core: A Library Service for the Analysis of Sensitive Datasets

Sarah Ben Maamar, Alice Chin, and Terrie Wheeler

Health Equity & Global Health 2 | C121-122

Utilizing the Newest Vital Sign (NVS) to Assess Health Literacy at a Regional Academic Medical Center's Family Medicine Clinic

Alexandria Wilson, AHIP and Kelsey Gabeel, AHIP

Does Medical Terminology Support Equity? It's Not What We Say, It's How We Say It

NEW VOICES **DEI**

Cynthia Sheffield, Dera Tompkins, Gisela Butera, Vence Bonham Jr., Deborah Duran, Corina Galindo, and Kimberly Middleton

Onward & Upward: Highlighting the Contributions of Black Urologists through Their Scholarship

DEI

Bart Ragon

Donor Weight Criteria in US Body Donation Programs: Website Analysis, Results, & Next Steps

NEW VOICES **DEI**

Heidi Reis, AHIP, Soph Myers-Kelley, Jenna Hagerty, Kerri Flinchbaugh, Kerry Sewell, Malli Barremkala, Marisa Langton, Maureen Helgren, Rebecca Pearl, and Sophie Orr

Clinical Support 1 | C125-126

Doing It Together: Integrating a Clinical Education Librarian into a Continuing Professional Development (CPD) Team

NEW VOICES

Lindsey Gillespie, AHIP and Michelle Lieggi, AHIP

Strength in Numbers: Using Data on Library Literature Searches to Measure Impact on Evidence-Based Patient Care and Hospital Policy/Procedure Changes

NEW VOICES

Lindsey Gillespie, AHIP and Michelle Lieggi, AHIP

Building the Capacity of Health Librarians for Data Management Services in Africa: A National Library of Medicine and DSI-Africa Initiatives

DEI

Grace Ajuwon and Voilet Ikolo

Virtual Lightning Talks 1

Assessing the Quality of Biomedical Boolean Search Strings Generated by Prompted and Unprompted Models

Derek Barnett and Robyn Reed, AHIP

Evaluating a Hospital Library's Customized Search Alert Service

Kathryn Vela, AHIP

Topics in Health Sciences Information: Developing an Undergraduate Curriculum Using Health Literacy Frameworks

Colleen Foy, AHIP

Spurious Copyrights, Paywalls, and Public Domain Works by United States Government Officials

NEW VOICES

Kate Nyhan

The Cura Corner: Embodying Whole Person Care in the Library

Karina Kletscher, AHIP

Exploring Healthcare Data with Novice Medical Marketers: A Collaboration between a Health Sciences and Business Librarian on a Marketing Class

NEW VOICES

Abigail Morgan and Megan Jaskowiak

Experiences of Librarians Working with Physician Associate (Assistant) Programs: Preliminary Interview Results

Karina Kletscher, AHIP, Megan Jaskowiak, Michelle Nielsen Ott, AHIP

1:30 - 2:45 p.m.

SYMPOSIA

Leadership & Management Symposium | A106**Building Culture and Community in a Hybrid Workforce:
A World Café Conversation**

Remote and hybrid work arrangements have become commonplace in libraries, hospitals, and health systems. With this dramatic shift toward new modes of work has come opportunities to reshape workplace culture and challenges for building and maintaining community in a hybrid workforce.

Participants in this highly interactive World Café conversation will connect with peers to discuss how they and their organizations have approached remote and hybrid work experiences, with a strong emphasis on building culture and community. If you'd like to share practices from your organization and benefit from the insights and innovations of your colleagues, this session is for you!

Mark Berendsen, MLIS, is Deputy Director of Galter Health Sciences Library & Learning Center, Northwestern University Feinberg School of Medicine. In this role, he is responsible for personnel management of library faculty and staff. At MLA|SLA '23, Mark co-hosted a World Café session where participants explored ideas and gained a deeper understanding of leadership roles and opportunities for libraries in innovative domains, including AI, virtual reality, data management, data visualization, and global health & health equity.

Data Services & Management Symposium | B113-114 | Livestreamed**Data Equity: Exploring What It Is and Why It Matters**

Have you been thinking of issues of power, bias, and discrimination in data collection, analysis, interpretation, and reporting? Data can empower practitioners, policymakers, and community members to make better, more informed decisions grounded in evidence, but they can also reinforce deficit narratives, biases, and other long-standing structural inequities when used inappropriately. Whether intentionally or unintentionally, data can be misused and misinterpreted, sometimes causing harm to communities already most marginalized.

In this session, you'll be introduced to data equity in the context of data ethics. You'll learn what is meant by data equity and ethics and the implications of not using equitable practices, and you'll gain ideas on strategies for ensuring that data are meaningful, accessible, and actionable for all communities.

Nicole Contaxis, MLIS, MA, is a Data Services Librarian and the Head of Data Sharing and Metadata Management at the NYU Langone Health. She leads the NYU Data Catalog and other infrastructure projects and research that focus on open science, data sharing, data curation, and ethics. She is also a Content Expert for the NNLM National Center for Data Services.

Aileen Alfonso Duldulao, PhD, MSW, is the Data Equity Measurement Methodologist for the Race, Ethnicity, Language, Disability & Sexual Orientation Gender Identity (REALD & SOGI) Section, Equity & Inclusion Division, of the Oregon Health Authority. In this role, she co-leads data equity and data justice work with internal and external partners. She is also the data advisor for the Oregon Pacific Islander Coalition and is on the Board of Directors for the Filipino Bayanihan Center.

Virtual Lightning Talks 1**A Collective Approach to
Integrating Health Equity
Considerations in Guideline
Development****DEI**

Carol Colasacco, AHIP and Marisol Hernandez

**A Framework for Auditing
Resource Access**

Linda Van Keuren, AHIP

**From Query to Answer: A
Health Sciences FAQ at a
University Library****NEW VOICES**

Ellen Philippopoulos and
Sabrine Calleja

2:45 - 3:00 p.m.

Transition Break

3:00 - 4:00 p.m.

Speed Date Networking | Various

Expand your professional network and connect in-person and virtually with your frolleagues.

4:15 - 5:15 p.m.

**MLA Leaders' Recognition
and International Visitor
Reception | Skyview Terrace**

(by invitation only)

Sponsored by:  Wolters Kluwer

5:30 - 7:30 p.m.

**Welcome Reception & Opening of
the Hall of Exhibits | Hall A**

Official welcome and ribbon cutting of the Hall of Exhibits. Entertainment provided by the Portland Unipiper.



7:00 a.m. - 6:00 p.m.

Registration Center | Pre-Function A

Sponsored by:  Wolters Kluwer

Nursing Room | A101

Recharge Room | C120

7:30 a.m. - 8:45 a.m.

Sunrise Seminar | Portland Ballroom 252

Excellence in Evidence-Based Practice: The Library as a Catalyst in Optimizing Healthcare Outcomes

During this speaking session, we will explore the critical role that librarians play in supporting and advancing EBP, research, and QI initiatives within healthcare institutions.

Presenter: Amy Six-Means, MLIS, Clinical Research Librarian, Children's Medical Center Dallas

Sponsored by:  Wolters Kluwer

Sunrise Seminar | Portland Ballroom 253

Sponsored by:  ELSEVIER

8:00 - 9:00 a.m.

First Sip of the Day | Prefunction A

9:00 a.m. - 5:00 p.m.

MLA Career Center, Member Resource Room, and Speaker Ready Room | Holladay Suites

9:00 a.m. - 5:00 p.m.

Hall of Exhibits & Technology Showcases | Hall A

Note: The Hall of Exhibits will be closed from Noon - 1:30 p.m., pacific time. Please join the Communities Lunch or explore the area using the Portland Dining Guide.

9:00 - 10:15 a.m.

IMMERSION SESSIONS

Education, Health Equity, & Global Health | A105

"Do You See Me?": The Lack of Representation of Diverse Skin Tones in Medical Education

DEI

Sponsors: African American Medical Librarians Alliance, Philadelphia College of Osteopathic Medicine

Racial Inequality and discrimination continue to be a persistent problem in healthcare. Research shows a lack of representation of diverse skin tone images in medical textbooks, journals, and digital media.

We aim to foster awareness of this issue and explore ways to develop inclusive visualization resources for medical students to acquire to detect important clinical signs and disease manifestations in all patient skin tones. Learn how the power of faculty collaboration can achieve the goal of DEI in medical education.

Find out how you can incorporate these powerful resources at your campus library.

Katresa Gardner, Stacie Fairley, and Valerie Cadet

Clinical Support, Education, and Information Services | A107-108

Case by Case: A Panel Discussion and Workshop on Developing Case Scenarios for Health Sciences Related Searching Demonstrations in Instruction

Sponsor: Libraries in Health Sciences Curriculum Caucus

This Immersion Session will explore the principles and methods around constructing relevant scenarios for your instructional audience. Learners will engage in applying principles, put forth by the panel, in their small group discussions. Walking through this process of developing an appropriate scenario for group instruction of health sciences learners will assist any participant who has struggled to come up with the right relevant example for a particular audience.

The target audience for this session are health sciences librarians who need to find or develop scenarios to use when looking for relevant examples to use for demonstration in instruction to groups. These could be those who either struggle to develop their own case scenarios or those who want to know some best practices for selecting an appropriate scenario for an audience. Both newer and more experienced librarians who engage in instruction will find this session of interest.

Elisa Cortez, AHIP, Michelle Knecht, AHIP, Katy Smith, Suzanne Fricke, Brandi Tuttle, AHIP, Cynthia Chelf, AHIP, and Laura Zeigen, AHIP

9:00 - 10:15 a.m.

IMMERSION SESSIONS**Information Services | C123****Speed Dating Through Evidence Synthesis Education:
Finding Your Instructional Match***Sponsor: Systematic Reviews Caucus*

Evidence synthesis (ES) support, such as systematic reviews or scoping reviews, has proliferated across libraries and similar institutions. Services often include an educational component, although the content and delivery varies according to factors such as needs of target audience and capacity / resources available to library employees. Panelists represent a wide range of experiences including context (e.g., cross-disciplinary, clinical settings), audience type, and experience with providing ES instruction. Panelists will discuss the successes and challenges of providing ES instruction and describe instructional approaches for a variety of formats to users both inside and outside of the library. Attendees will engage with panelists via a brainstorming activity designed to stimulate conversation about instructional strategies during a breakout session. Attendees will leave the session with a plan for how to provide instruction on evidence synthesis regardless of their population and resources.

Sally Smith, Cozette Comer, Leila Ledbetter, AHIP, Jenessa McElfresh, AHIP, Rachel Whitney, AHIP, and Rachel Lane Walden

Professionalism & Leadership | Virtual**Career Planning Bootcamp for Health Science Librarians**

Sponsors: Early Career Librarian Initiative of the South Central Chapter, Leadership & Management Caucus, Public Services Caucus, and Professional Recruitment and Retention Committee

The Early Career Librarian Initiative (ECLI) of the South Central Chapter of the Medical Library Association (SCC/MLA) partnered with Network of the National Library of Medicine (NNLM) Region 3 to offer a 3-part webinar series on career development and navigating the early years of librarianship. Topics included writing detailed cover letters, understanding tenure and promotion processes, exploring the Academy of Health Information Professionals (AHIP), building professional networks, and developing skills to better support career goals. This immersion session condenses the series into a mini boot camp for an in-depth look at career development, followed by breakouts to facilitate professional networking and Q&A.

Sandra Desjardins, Katie Pierce-Farrier, Laura Haygood, AHIP, Katie Prentice, AHIP, Brenda Linares, AHIP, Lindsay Blake, AHIP, Susan Steelman, AHIP, Julie Bolin, and Rachel Helbing, AHIP

LIGHTNING TALKS 3 | C124**Searching like a Boss:
#PubMed and TikTok****NEW VOICES***Pam Pierce***From Gowns to Towns: Partnering
with Community Organizations to
Teach Health Literacy Skills****DEI**

*Terri Ottosen, AHIP and
Karen Grigg, AHIP*

**Integration in a Residency
Scholarship Curriculum: Successes
and Challenges in a Family
Medicine Program**

*Cecelia Vetter, Emilee Delbridge,
and Julia Stumpff*

**Self-Reflections on Our Literature
Search: Creation and Utility of a
Literature Search Best Practices
Guide for Librarians****NEW VOICES**

*Amanda Haberstroh, AHIP, Soph
Myers-Kelley, and Heidi Reis, AHIP*

**The Data Lifecycle Isn't for
Me! Showing the Benefits of
Interoperable RDM Training***Julie Goldman***An Evaluation of Connecting
Library and Information
Science Graduate Students with
Consumer Health Information
Specializations (CHIS)***Samantha Nunn*

9:00 - 10:15 a.m.

LIGHTNING TALKS 3 | C124

Supporting Health Equity Initiatives: Creating an Interactive eResource to Support Health Disparities Competency

DEI

Beth Reeder, Cayla Robinson, Lauren Robinson, Rebecca Morgan, and Stephanie Henderson

Multi-stakeholder Collaboration to Develop Bioinformatics Information Resources for Novice Learners

Aida Miro-Herrans and Ashley Beard

Library as the Catalyst for Publisher and Professional Society Collaboration

Brian Hull

The Effectiveness of Library Space on Student Learning and Success: Perceptions and Realities

NEW VOICES

Samantha Loster

Interprofessional Collaborative Learning: Evidence Synthesis in Nursing Science

Benjamin Bass, Emma Millon, Jennifer Withall, Kathleen Zavotsky, Lita Anglin, and Gregory Laynor

PAPER SESSIONS

Information Services 2 | B111-112

Adaptive Space: A Student-Centric Approach to a Health Sciences Library Wellness Room

NEW VOICES

Varina Kosovich

Capturing User Feedback on Library Spaces

Hannah Norton, Lauren Adkins, AHIP, Mary Edwards, AHIP, Michelle Tennant, Courtney Pyche, AHIP-P, Jane Morgan-Daniel, AHIP, Ariel Pomputius, AHIP, and Nina Stoyan-Rosenzweig

Moving Out of the House (Librarian Program): Creating a New Medical Student Liaison Model

Gregg Stevens, AHIP

They Don't Have Time for the Library – Understanding What the Literature Says about GME Trainees and Their Needs

Emily Johnson-Barlow, AHIP, Holly Hudson, Deborah Lauseng, Emily Gilbert, and Tina Griffin

In Their Own Words: Surveying GME Trainees on Meeting Their Program Requirements and Accreditation Milestones

Emily Johnson-Barlow, AHIP, Holly Hudson, Deborah Lauseng, Emily Gilbert, and Tina Griffin

Professionalism & Leadership 2 | B117-118

A Gamified Design Process for an Academic Health Sciences Library Remodel

Janet Crum, AHIP, Sandra Bernal, Altaf Engineer, Annabelle Nuñez, and Bo Yang

Stronger Together: Libraries, Their Governing Bodies, and Our Worth

NEW VOICES

Adela Justice, AHIP and John Mokoyama, AHIP-D

Cultivating Values of Diversity, Equity, and Inclusion (DEI) through a Book Club in Health Sciences Education

DEI

Hannah Schilperoort and Kim Austin

Strengthening the Workforce through the Health Sciences Librarianship Apprenticeship Program

Rachel Lerner and Rebecca Morin

Mixed Domains 2 | C121-122

Building a Research Ethics Protocol Data Archive at the Kamuzu University of Health Sciences: Challenges and Opportunities

NEW VOICES **DEI**

Patrick Mapulanga

Python Programming for Medical Librarians: Harnessing Data Analysis and Visualization

NEW VOICES

Joachim Senkaali and Onan Mulumba

Evidence Updates: Using a Performance Comparison to Evaluate Four Distinct AI-Assisted Citation Screening Tools

Jing Su, Mallory Blasingame, John Clark, Nunzia Giuse, FMLA, Taneya Koonce, and Jerry Zhao

It's Logical: Using a Logic Model to Plan and Evaluate a Campus-Wide Initiatives for Open Science

Sally Gore

Information Management 1 | C125-126

New Ways to Engage Users and Provide Access to Primary Source Documents Arising from the Opioid Industry

NEW VOICES

Anne Seymour, Kevin Hawkins, and Chris Shaffer, FMLA



9:00 - 10:15 a.m.

PAPER SESSIONS**Information Management 1 continued | C125-126****Strengthening Our Understanding of Librarian Roles in Supporting Medical Image Consent Standards***Rachel Keiko Stark, AHIP, Sarah McClung, and Megan DeArmond***Discovery Systems and Academic Health Sciences Libraries 2015–2024***Hal Bright, AHIP***An Exploratory Inquiry of the Trends and Practices of Using AI Tools in Systematic Reviews and Their Adherence to Methodological Quality Guidance***Casey Phillips, AHIP and Prasanna Vaduvathiriyar, AHIP***Library Return-on-Investment Update: Model Correlating Institutional Investment in Libraries with Grant Income***Douglas Varner, AHIP and Jett McCann, AHIP***Virtual Papers 2****Creating a Publishing and Impact Service***Terry Selfe, AHIP***A Comparison of an Academic Health Sciences Library Director Profile in 2009 and 2024***Ana Cleveland, AHIP, FMLA and Jodi Philbrick, AHIP***How Do Journals and Publishers of Highly Selected Journals React to Submissions of Artificial Intelligence Assisted Manuscripts?***Misa Mi, Yingting Zhang, AHIP, Lin Wu, and Wendy Wu***SYMPOSIA****Data Services & Management Symposium | A106****Data Partners: Fostering Librarian-Researcher Partnerships**

Providing data management assistance to a researcher in a few brief consultations presents few challenges to a librarian. Working with a researcher in an extended partnership lasting months and years presents unique challenges that experience with brief consultations do not prepare you for.

In this session, three established librarian/researcher pairs in an extended partnership will show how you can work most effectively with a research partner. You'll learn how to set expectations, identify the roles you will adopt, negotiate recognition for your contribution, communicate effectively, address challenges, and generally promote a satisfying collaboration. You'll also learn strategies for engaging the research community in your institution.

You'll leave this session with knowledge and guidance that can help you develop a reputation as the librarian researchers most want to work with and advance in your career.

Levi Dolan, MLIS, is a Data Services Librarian at the Ruth Lilly Medical Library at the Indiana University School of Medicine in Indianapolis, Indiana. His work involves project management, consultation, and instruction that addresses the full research data life cycle. As part of the Ruth Lilly Medical Library's Research Team, he contributes to data management, research metrics, and scholarly communications initiatives. His research partner, Amy Han, PhD, will appear via recording.

Ben Gerber, MD, MPH, is a Professor & Chief, Division of Health Informatics and Implementation Science, Department of Population and Quantitative Health Sciences at the UMass Chan Medical School. He is an internist, professor, researcher, and data scientist. He leads an NIH-funded clinical trial to evaluate clinical pharmacists, community health workers, and telehealth in supporting continuous glucose monitoring. He is a life-long software programmer and co-leads the R Café with Tess Grynock. The R Café convenes a group of R users on a monthly basis to share skills, show off cool projects, and troubleshoot code.

Tess Grynock, MLIS, is the Research Data & Scholarly Communications Librarian at the Lamar Soutter Library, University of Massachusetts Chan Medical School. She collaborates with faculty, students, researchers, fellow colleagues, and academic units to support scholarly communication programs, including library-based research data support services. Tess is the President-Elect of the Research Data Access and Preservation Association and a certified Carpentries instructor with NESCLiC. Her research partner is Ben Gerber.

Alisa Surkis, PhD, MLS, is the Deputy Director and Vice Chair for Research of the NYU Health Sciences Library, in which capacity she has led the development of data services. She is also the Director of the NNLM National Center for Data Services, which provides training and resources to develop capacity for data services in the health information community. Since 2018, Alisa has served as the Data Science Core Director for an NIH BRAIN Initiative collaborative grant in which capacity she works with researchers to facilitate FAIR data sharing and collaborates in the development of BrainSTEM, a tool for collection of structured, standardized experimental neuroscience metadata. Her research partner, Robert Froemke, PhD, will appear via recording.



9:00 - 10:15 a.m.

SYMPOSIA

Collections Development Symposium | B113-114 | Livestream

Collective Collecting and the Challenge of Preservation

Large scale collaborative collection development, management, and preservation is becoming a necessity as environmental, organizational, and informational challenges and opportunities transform libraries. These changes make it imperative that libraries and publishers engage in meaningful discussions about preservation and their complementary roles in maintaining access to print and electronic content and preserving it for the future. Collaborative collection development and preservation can be done at all sizes of institutions, and finding and nurturing partnerships and networks in your collection ecosystem is essential.

Speakers will explore models of collective collecting for print and digital materials; common challenges, including preserving data and open access resources, shared decision-making among partner institutions, and space considerations; and the inherent fragility of providing access to and preserving born-digital materials. This moderated expert panel will empower librarians to understand and identify the potential role of collective collections and preservation in their circumstances. By working together, we will maintain the scholarly record for our current and future users.

Moderator

Melissa De Santis, MLIS, AHIP, is the Director of the Strauss Health Sciences Library, University of Colorado Anschutz Medical Campus. Melissa has worked as a librarian for over 25 years and gained her experience in health sciences library collective collecting and preservation as a member of the Western Regional Storage Trust (WEST) Executive Committee and through work with the Colorado Alliance's Shared Print Trust and the Rosemont Shared Print Alliance.

Presenters

Vida Damijonaitis is the Director of Worldwide Sales for the American Medical Association, where she is responsible for all content sales and sales development efforts, including licensing, aggregation, circulation, permissions and new products, for the JAMA Network journals.

Alison Wohlers is the Shared Print Program Manager at the California Digital Library, in which capacity she leads collaborative print management efforts in the University of California Libraries system and the Western Regional Storage Trust, a regional collaboration of over 50 academic and research libraries. Alison is also involved in the leadership of national shared print federations and initiatives.

9:15 - 9:45 a.m.

Technology Showcase | Hall A

ClinicalKey AI and the Library: Advocating for Better Clinical Decision Making at the Point of Care

Add value and drive increasing usage of your library services with the latest AI technology backed by current, trusted, evidence-based information while mitigating against the rogue use of generic, unvetted AI tools. Join us to learn more about the technology and content that fuels ClinicalKey AI.

Presenter: *Claudine Lott, MD, Physician Executive*

Sponsored by:  **ClinicalKey** AI+

10:00 - 10:30 a.m.

Technology Showcase | Hall A

TDNet AI – A New Era of Knowledge Discovery

TDNet AI transforms the way you discover and access information resources. By combining Generative AI with a wealth of trusted medical content, TDNet AI empowers users to retrieve the information they need with unprecedented efficiency. We will delve into the new discovery experience of TDNet AI, demonstrating how it can extract key findings, generate referenced summaries within seconds, and open new paths for research.

Sponsored by: **TDNet**
simply better

10:15 - 10:30 a.m.

Transition Break



10:30 - 11:45 a.m.

**PLENARY:
John P. McGovern
Lecture with Safiya Noble**

Oregon Ballroom 201 - 204

Dr. Safiya U. Noble is an internet studies scholar and professor of Gender Studies and African American Studies at the University of California, Los Angeles (UCLA). She is the author of a best-selling book on racist and sexist algorithmic bias in commercial search engines, entitled *Algorithms of Oppression: How Search Engines Reinforce Racism* (NYU Press), which has been widely-reviewed in scholarly and popular publications. Dr. Noble is collaborating with the White House on the Executive Order on the Safe, Secure, and Trustworthy Development and Use of Artificial Intelligence.

This session will be live streamed for virtual attendees and available post conference on demand.

A book signing will immediately follow the live session in Portland.

11:45 a.m. - Noon

Transition Break



Noon - 1:15 p.m.

Communities Lunch | Oregon Ballroom 201-204

All are welcome! Connect with MLA Caucuses, Chapters, and other groups.

Please note the Hall of Exhibits is closed during this time. Find alternative lunch options using the Portland Dining Guide, or attend one the Exhibitor Lunch & Learn sessions.

MLA Fellows Luncheon | B119

(by invitation only)

Exhibitor Lunch & Learn | Portland Ballroom 253

Connecting Open Web Researchers to Library Resources

Medical researchers routinely search sites like PubMed and Google rather than the library. Join Third Iron to learn how medical libraries are using LibKey Nomad to connect these researchers to library resources, expanding access, improving efficiency, and increase usage. The session is free but registration is required, please visit:



Presenter: Kendall Bartsch

Sponsored by: **Third Iron**

Exhibitor Lunch & Learn | Portland Ballroom 254

Wolter's Kluwer Lunch & Learn

Join us for an engaging session where we will show potential research productivity gain using a real example from Ovid GPT (name to be finalized), a platform for applications of GenAI and LLM to Ovid and its content. After that, we will review the "wall of garden" design in the prevailing AI products launched by the STM publishers and discuss whether applications of new AI technology should be limited to the content that a publisher has access to, taking into account the issues related to LLM.

Presenter: Allan Lu PhD Vice President Product Management Medical Research

Sponsored by: Wolters Kluwer

Exhibitor Lunch & Learn | Portland Ballroom 255

Empowering Scientific Collaboration: Unveiling Protocols.io

Join this lunch session to learn about Protocols.io—part of the Springer Nature brand—to discover real-life examples of how the platform can help your team innovate! Protocols.io is a secure platform for developing and sharing reproducible methods.

Other benefits include:

- Standardization across teams & projects
- Facilitating regulatory compliance
- Enhances collaboration
- Streamlining lab workflows
- Accelerates experimentation

Presenter: Marc Iacono

Sponsored by: **SPRINGER NATURE**

1:30 - 2:00 p.m.

Technology Showcase | Hall A

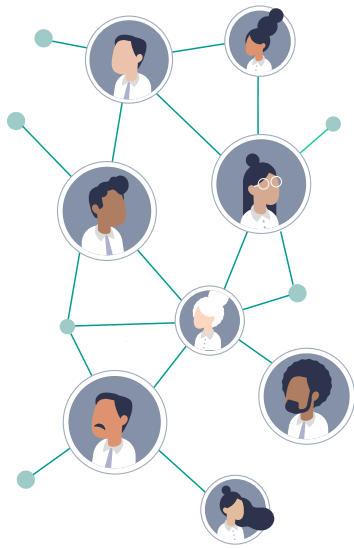
Covidence: Systematic Review Technology Now and for the Future

Join Covidence Community Manager, Stephanie Harkins, MSIS, AHIP for an enlightening exploration into the world of systematic review technology with "Covidence: Systematic Review Technology Now and for the Future." In this event, we will delve into the present platform and future potential of Covidence.

Presenter: Stephanie Harkins, MSIS, AHIP

Sponsored by: covidence





Make your professional journey more meaningful

Find your people and your communities

- Connect and collaborate with expert colleagues
- Engage with communities that share your interests
- Innovate with targeted skills to benefit your career and institution



GET CONNECTED

1:30 - 2:45 p.m.

IMMERSION SESSIONS

Professionalism & Leadership | A105

Building a Strong & Supportive Workplace: Negating Incivility & Bullying in the Library Environment

This interactive session, inspired by nursing anti-bullying research, will give attendees knowledge and tools to help prevent incivility and bullying in their workplace. In addition to providing an in-depth look at the contributing factors and characteristics of different forms of workplace lateral violence, this session will employ cognitive rehearsal training, an evidence-based intervention, to prepare attendees to identify and address incivility and bullying in their professional lives. Attendees will be provided with shared language and materials with which to base their activities on and will walk away with practice utilizing cognitive rehearsal training. Participants will be invited to continue to develop their skills through online materials available asynchronously.

Maggie Albro and Rachel Keiko Stark, AHIP

Innovation & Research Practice | A107-108

Deciphering the Editorial Peer Review Process

Sponsors: Research Caucus, Medical Library Education Caucus, Scholarly Communications Caucus, and Systematic Review Caucus

This immersion session will equip participants to either serve as editorial peer reviewers for journals or to respond productively to peer reviewer feedback.

Jonathan Eldredge, AHIP-D, FMLA, Kerry Dhakel, and Kaitlin Throgmorton

Professionalism & Leadership | C123

Re-envisioning Libraries in Uncertain Times: Attracting, Retaining and Growing Highly Talented Teams!

DEI

Sponsors: Members Caucus, Academic Libraries Caucus, Association of College & Research Libraries (ACRL) Health Sciences Group, African American Medical Librarians Alliance Caucus

In today's competitive market and an evolving information landscape, the library profession is undergoing profound changes. Academic health science libraries continue to face increased organizational changes including staffing issues, high turnover, recruitment and retention of highly diverse competitive skilled workforce.

This session will invite a panel of library experts to discuss and share best approaches on how organizations may innovatively address these challenges. Emphasis will be on talent landscape, DEIA, and data driven approaches to prove value. How can leaders strategically address these issues, continue to adapt, and prepare their libraries for a forever-changed work and information landscape while building a workforce that is not only highly skilled, but also motivated, and engaged.

Maud Mundava, AHIP, Heidi Heilemann, AHIP, Hsin-lian (Oliver) Chen, Teresa Knott, Melissa De Santis, AHIP, and Catherine Soehner, AHIP

1:30 - 2:45 p.m.

RTI Poster Sessions | C124

Bringing research to practice! Join the Research Training Institute (RTI) faculty and fellows at special sessions to learn more about research and how it benefits your library and users. The sessions feature fast paced and engaging “ignite” talks by the RTI fellows about their research projects that are making meaningful contributions to their communities and expanding our health information research knowledge base.

Exploring Synthetic Data and Machine Learning for Data-Intensive Health Research

Vicky L. Chung

Transgender Patients Use of Information Embodiment within Healthcare Settings: A Dissertation Proposal

Jordan Dias Correia, AHIP

Population Health Resources and Services in Medical Libraries

Carolann Curry

Critically Appraising the Biomedical Literature: A Pilot Study of Second-Year Medical Students

Deborah Farber

Comparing Gender & Sexual Identity Terms in PubMed MeSH Headings to a Community-Built Controlled Vocabulary (Homosaurus)

Mego Franks

Reflecting Diversity: Graphic Medicine Collections in the UW Library

T. Brandon Hall

Considerations for Disability Research: Protecting Yourself, the Community, and the Research

Laura N. Haygood

New Frontiers: Opportunities and Gaps in Leadership Professional Development For Medical/Health Sciences Library Directors and Managers

Jackson K. Hoch

“Things I Wish I Knew”: Understanding Information Needs, Sources and Gaps for People Suffering with Polycystic Ovary Syndrome

Holly Hudson

The Scope of Information Available Online to Consumers for Diminished Ovarian Reserve in Women: A Content Analysis

Heather Jaglowski

Assessing the Correlation Between Search Quality and Article Selection in Preclinical Medical Students’ EBM Assignments

Juliana T Magro

Not That Kind of Survey: Mapping User Needs and Contexts with Found Data

Janel L. Mittelstedt

(re)search + (re)design: Improving an Academic Library Website to Better Serve the Needs of Health Sciences Faculty and Students

Emrys Moreau

Librarian Involvement in Medical Student Scholarly or Research Activities

Angela N. Murrell

Assessment of Research Tool Use for Scholarly Communication by Researchers at All India Institute of Medical Sciences (AIIMS), New Delhi

Sangeeta Narang

Closing the Loop: Student Learning Assessments in Health Science Libraries

Danielle M. Westmark

Preferred Communication Channels for People of Diverse Cultural Backgrounds Seeking Mental Health Information

Linda Yang

PAPER SESSIONS

Education 2 | B111-112

A Scoping Review of Librarian Involvement in Competency-Based Medical Education

Amy Blevins, John Cyrus, Laura Ziegen, and Molly Knapp, AHIP

Forming a Campus Wide Systematic Review Working Group

Carrie Adams and Lauren Adkins, AHIP

Stronger Together: Supporting Student Success with Cross-Campus Collaboration

Elizabeth Coghill and Jeffrey Coghill, AHIP

Going Further Together: Collaboratively Building a Brand New Research Impact Challenge

Annabelle Holt, Jess Newman McDonald, Jenessa McElfresh, AHIP, Megg Doolin, and Sarah Newell



1:30 - 2:45 p.m.

High School Push-In Program to Encourage Pursuit of a Career in Library Science

DEI

Terrie Wheeler, Diana Delgado, AHIP, Michael Wood, Sarah Jewell, and Andy Hickner

Information Services 3 | B117-118

Strengthening Community Engagement: Collaborative Outreach Initiatives

NEW VOICES

Irene Nakazibwe

Lasting Impact of COVID-19 on the Programs and Services Provided by Academic Health Sciences Libraries

Bart Ragon, Elizabeth Whipple, AHIP, and Melissa Rethlefsen, AHIP

Embedded Librarianship in Pilot Online MPH Program

Kristen Sheridan

Providing Health Information to Patients: An Elective Experience for Fourth Year Medical Students

Dana Ladd, AHIP

Turn Down the Volume, Turn Up the Skills: Addressing Consult Volume through Co-curricular Graduate Student Programming”

Carrie Baldwin-SoRelle and Karen Grigg, AHIP

Education 3 | C121-122

Creating a Graphic Medicine Book Club to Promote Interprofessional Education and Community Building

NEW VOICES

Michelle Knecht, AHIP and Tiffany Follin, AHIP-S

Evaluation of Empathy Development Using Graphic Novels in a Medical Humanities First-Year Seminar

NEW VOICES

Brittany Heer and Susanna Foxworthy Scott

ChatGPT and Information Literacy Instruction: A Multi-site Case Study of Possible Models for Introducing Students to AI LLMs in the Classroom

Alexander Carroll, AHIP and Jason Reed

Strengthening Self-Directed Learning: Librarians and Faculty Collaborate on Curriculum

Megan Von Isenburg and Samantha Kaplan

SEE-ing Results in LibGuide User Testing: Applying the SEE Protocol for LibGuide User Testing

NEW VOICES

Emily Espanol, AHIP

Education 4 | C125-126

All about Systematic Reviews: Making Quality Learning Equitable and Freely Accessible to All

DEI

Annette Williams, Sheila Kusnoor, Lori Harding, AHIP, Poppy Krump, Nunzia Giuse, FMLA, Taneya Koonce, and Jerry Zhao

An Academic Health Sciences Library’s Experience Providing Training in Generative Artificial Intelligence

Fred LaPolla and Genevieve Milliken

Assessing the Preclinical Evidence-Based Medicine Curriculum: Results from a Novel Pre- and Post-test Instrument

Caitlin Plovnick and Juliana Magro

Integrating AI Large Language Models into PubMed Searching for a Medical Student Grand Rounds Course

Sheila Green, AHIP, Catherine Pepper, and Steve Maxwell



1:30 - 2:45 p.m.

SYMPOSIA

Leadership & Management Symposium | A106

Leading and Serving in an Unscripted World: Leadership, Librarianship, and Improv

Can the methods used by improv professionals in comedy and theater be applied to the day-to-day work of librarians and leaders? They can! Improv teaches cooperation, listening, brainstorming, communication, and other skills that are hugely beneficial in the library environment. Doing improv can change how you feel about yourself, prepare you for new work roles, help you navigate difficult conversations and respond to new situations, and it can spark insights and creativity in your work as librarians and leaders. Patrick Short, a highly experienced improv facilitator, will guide you in practicing improv techniques in a safe/no-pressure to perform atmosphere. The 2023 improv session was a joyful and fun hit. Don't miss what will undoubtedly be the most fun and transformative session of the conference!

Patrick Short, MFA, has been leading Applied Improvisation workshops for organizations since Apple requested a workshop in team building in 1989. Since the onset of the pandemic, Patrick has taught clients in 42 countries via Zoom. He's a certified professional in Applied Improvisation by the Applied Improvisation Network and a Certified Provider, Executive Level, by CSz Worldwide. Patrick co-wrote *Jill & Patrick's Small Book of Improv for Business and Yes, And Your Customer Service*.

Data Services & Management Symposium | B113-114 | Livestream

Data Instructors: Providing Data Literacy as Part of Information Literacy

In this session you'll learn how data literacy and information literacy are related and how you can integrate teaching data literacy skills, including data discovery, data analysis, data visualization, and data preservation, into your information literacy instruction and programs. Three data librarians will share their approach to data literacy instruction and their strategies for including data literacy, particularly as defined by the ACRL Framework for Information Literacy in Higher Education, in their information literacy instruction. You'll leave the session with fresh ideas on how you can support all your patrons in understanding the relationship between data and information literacy.

Theresa Burress, MLS, is the Assistant Director of Research & Instruction at the University of South Florida, St. Petersburg, in which capacity she provides research services and instruction for natural sciences departments. She has authored a number of publications on data and data literacy and is particularly interested in topics at the intersection of information and data literacy.

Daria Orłowska, MSLIS, is a Data Librarian and Assistant Professor at Western Michigan University, in which capacity she advises on data management plans, creates data education resources, and provides consultations on all things data. In addition, she helps curate datasets from archival collections that serve as data literacy teaching tools for college undergraduates and K-12 students alike.

Ashley Rockwell, MA, is the Data Literacy & Learning Specialist for the Georgia State University Library Research Data Services Department. She leads the development, implementation, and assessment of the *Get Data Ready!* and Public Interest Data Literacy (PIDLit) initiatives. The former aims at building data literacy curriculum and programming, the latter on connecting students with community partners and applying data skills to address real-world problems.

2:15 - 2:45 p.m.

Technology Showcase | Hall A

Understanding the Impact of US Medical Research at the Point of Care

The global influence of the US in health and medical research is undeniable. For the first time, we can examine how governments and healthcare systems worldwide depend on this data to develop healthcare infrastructure and guidance.

Learn how you can use emerging technologies to track the health and social impact of your institution's research.

Speaker: *Manisha Bolina*

Sponsored by: **BMJ**

2:45 - 3:00 p.m.

Transition Break

3:00 - 4:30 p.m.

PLENARY:
A Decade of Doe Lecturers

Oregon Ballroom 201 - 204 |
Livestreamed

In recognition of MLA's 125th Anniversary, we're taking a different approach at MLA '24. The Janet Doe Lecturers from the past 10 years will serve as a panel, present their thoughts, and engage with the audience—in-person and online—on how MLA's Values as an association will help us sustain our impact and thrive as health information professionals in the decades to come.

Afterwards, stop in at the MLA Booth in the Exhibit Hall to meet the panelists.



Access the
past published
lectures from
MLANET: Janet
Doe Lectureship

4:30 - 6:00 p.m.

Join Poster Session in
Hall of Exhibits | Hall A

7:00 a.m. - 3:00 p.m.

Registration Center | Pre-Function A

Sponsored by:  Wolters Kluwer

Recharge Room | C120

7:00 a.m. - 6:00 p.m.

Nursing Room | A101

Coat & Luggage Check | A109

7:30 - 9:00 a.m.

Sunrise Seminar | Portland Ballroom 252

Join the American Psychological Association (APA) for a Sunrise Session on how Academic Writer streamlines support for research and scholarly writing in APA Style. We will navigate through the platform's three self-paced, guided centers that align with the latest edition of the *Publication Manual of the American Psychological Association* (7th ed.) to help students build a strong writing foundation.

Presenter: *Emily Shotick*

Sponsored by:  AMERICAN PSYCHOLOGICAL ASSOCIATION

8:00 - 9:00 a.m.

First Sip of the Day | Prefunction A

9:00 a.m. - 1:00 p.m.

MLA Career Center, Member Resource Room, and Speaker Ready Room | Holladay Suites

9:00 a.m. - 1:30 p.m.

Hall of Exhibits & Technology Showcases | Hall A

9:00 - 10:15 a.m.

IMMERSION SESSIONS

Education, Health Equity, & Global Health, Innovation & Research Practice, and Professionalism & Leadership | A105

An Ally is an Activist is an Advocate: An LGBTQIA+ Panel Discussion & Workshop

DEI

Sponsor: *LGBTQIA+ Caucus*

This will be a panel discussion for those who are already Q+ allies and want to be better- with an interactive portion around ways that everyday library workers can support and be an ally to the LGBTQIA+ Community.

Soph Myers-Kelley, Catherine Lockmiller, and David Keddle

Professionalism & Leadership | A107-108

Lessons in Slow Librarianship: Making Room for Thought, Intention, and Kindness

DEI

Sponsor: *African American Medical Librarians Alliance*

In a world that prioritizes grind culture, a growing need exists for practices championing thoughtfulness, intentionality, and compassion. In librarianship, this approach is often described as Slow Librarianship, “an antiracist, responsive, and values-driven practice that opposes neoliberal values... Internally, slow library culture is focused on learning and reflection, collaboration and solidarity, valuing all kinds of contributions, and supporting staff as whole people” (Farkas 2021). Operationalizing slow librarianship requires leaders to embrace kind leadership, pursue continual professional development, and maintain awareness of the role of intersectionality and identity in their own and their colleagues’ lives. In this session, three library leaders, each at different stages of their leadership journeys, will share insights and offer practical strategies for implementing Slow Librarianship in the health sciences library environment.

Lorin Jackson, Shannon Jones, AHIP, FMLA, and Jill Deaver

Professionalism & Leadership | C123

The Image of the Medical Profession in Film

DEI

Sponsor: *History of the Health Sciences Caucus*

This dynamic conversation will reflect on the portrayal of doctors, nurses, and other medical professionals in film through various perspectives including historical/cultural, stereotypes, positive/negative representations, and realism/dramatization. A facilitated flipped classroom format and Kahoot!’s game-based learning platform will assist in exploring selected films while yielding valuable historical, social, and cultural insights.

Jeff Slagell

Visit MLA's Living Library!

Tuesday, May 21 | 1:00 - 3:00 p.m. | B119

What Happens at a Living Library?

- Each "book" is a person with lived experiences often met with stereotypes, prejudice, and misunderstandings
- As a reader, you have an opportunity to connect with someone who is different from you
- Ask any questions you may be too shy or not even sure how to ask

How It Works

1. Take a look at the book titles and descriptions listed in the QR code
2. Select the books you want to read
3. Go to the Living Library registration desk to check out your book(s)

There will be two 30-minute reading sessions—first-come, first-served. Each book will share their introduction to their experiences, and readers are then able to ask the book questions they are curious about without judgement.

This is an interactive and often very enlightening experience, with both readers and books themselves coming away with much more than expected. This is a chance to talk about topics we may not understand very well through those that have experienced them.



So, you want to be a book? Join us virtually this fall!

Contact Kelsa Bartley, k.bartley@med.miami.edu, *MLA DEI Committee Chair*

9:00 - 10:15 a.m.

LIGHTNING TALKS 4 | C124

Stronger When Supported by Data: Clinical Impact of a Librarian Mediated Literature Review Service

Carrie Grinstead, AHIP, Danielle Linden, AHIP, Heather Martin, AHIP

Partnering to Teach Evidence-Based Practice Skills at a Health Science University

NEW VOICES

Amy Ferguson

Integration of a Medical Librarian into a Clinical Teaching Certificate Program Enhances Teaching of Evidence-Based Medical Education

NEW VOICES

Anna Liss Jacobsen, Patricia Kritek, and Somnath Mookherjee

GenAI Is Here – a Look at ClinicalKeyAI

Emily Singley

Implementing Zscaler as a Remote Access Solution – What the Library Needs to Know

Elizabeth Suelzer and Willie Lasticly

Strategic Planning for Hospital Libraries: A Case for Investing in Planning Efforts

Catherine Soehner, AHIP and David Coleman

Reduce, Reuse and Recycle Your Hospital Library Collections

Kellee Selden and Lucinda Bennett

Stronger Together: Comparing Overviews in DynaMed Plus, Clinical Key and UpToDate

Helen-Ann Brown Epstein, AHIP-D, FMLA, Kaitryn Campbell, AHIP-S, Dana Gerberi, and Ellen Rothbaum, AHIP

Building an International Partnership between Academic Health Sciences Librarians: From Informal Exchange to Research Collaboration

Alice Stokes, AHIP and Maria Sobrido-Prieto

Unlocking Boundless Horizons: Cunningham Memorial International Fellowship Experiences

DEI

Kadimo Khutsafalo

Libraries and Patient Portal Instruction: Stronger Together

Melissa Wagner and Sydni Abrahamsen, AHIP

Calculating Cost per Use Statistics for ClinicalKey Packages

Liz Kellermeyer, AHIP

PAPERS

Information Services 4 | B111-112

An Exploration of Basic/Life Science Information Professionals: Educational Background, Liaison Roles and Carnegie Classification

Laura Lipke, AHIP, Stephanie Schulte, and Jeremy Kupsco

Passing the Baton: Peer Mentorship and Succession Planning in the Retention and Cultivation of Professional Relationships

NEW VOICES

Cindy Runnels, AHIP and Kristyn Gonnerman

Update and Expansion of an Interprofessional Education Search Strategy Validation Study for NLM PubMed, Ovid MEDLINE, and Elsevier Embase

NEW VOICES

Rebecca Carlson, AHIP, Sophie Nachman, and Luke Barron

Onboarding Experiences: Through the Looking Glass of Early Career Health Sciences Librarians

Caraline Annichiarico, Kay Strahan, AHIP, and Lindsay Blake

Professionalism & Leadership 3 | B117-118

Lifelong Learning a Month at a Time: The Development and Ongoing Assessment of an Internal Professional Development Program

NEW VOICES

Anna Getselman and Rebecca Kennison

Power through Agency and Empowerment: An Observational Study of Equity in Credentialing and Hiring Practices in Libraries

DEI

Jamia Williams, Peace Ossom, AHIP, Xan Goodman, AHIP-D, Ayaba Logan, and Christian Minter



9:00 - 10:15 a.m.

PAPERS

Professionalism & Leadership 3 | B117-118

Project Management Level Up: How the Right Tools and Training Can Improve Collaboration in Your Library

NEW VOICES

Tiffany Garrett, AHIP

The Medical Library as a Connector to Campus Well-Being

Annie Thompson, Andrea Harrow, AHIP-D, and Karin Saric

Innovation & Research Practice 2 | C121-122

Applying Machine Learning to Prioritize Literature Search Results: A 5-Year Review at an Academic Medical Library

Michelle Cawley

Improving PICO Search Strategies with Causal Inference Methods

NEW VOICES

Madelyn R. K. Glymour

The Evolution of an Electronic Lab Notebook Community

Elizabeth Whipple, AHIP and Levi Dolan

Scoping Reviews in Library and Information Science

NEW VOICES

Alexia Sheck, Julie Evener, Jessica Cain, and Matthew Chase

The Reality of Replicability: Evaluating the Capacity of Database Interfaces to Support Searching for Systematic Reviews

NEW VOICES

Cozette Comer, Roberto Silva, and Jackson Hoch

Education 5 | C125-126

Enhancing Library Services for the Virtual Medical Library Community through Creative Event Planning

Katelyn Angell

Supporting Arts in Medicine and Health Humanities through Collaboration

Chloe Hough, AHIP and Tariq Rahaman, AHIP

Take a Walk on the Wild Side: Walking Guides for Self-Directed Nature-Based Therapy

Ariel Pomputius, AHIP and Nina Stoyan-Rosenzweig

Library-Led Interprofessional Education Using NNLM Grant Funding Examples

NEW VOICES

Kay Strahan, AHIP and Lindsay Blake

Implementing Mental Health First Aid (MHFA)

Mary Thomas

Virtual Papers 3

Using iCite to Generate Bibliometric Reports to Support Evidence-Based Decision Making

Paul Albert and Terrie Wheeler

Being Stronger by Being Present: The Role Liaison Librarians

Mina Ghajar

Teaching Librarians about NLP Tools for Clinical Text De-identification

Christine Nieman Hislop and Katie Pierce Farrier

Learning on the Job: A Webinar Series for Early Career Librarians by Early Career Librarians

NEW VOICES

Brandon Kennedy, Caraline Annichiarico, Katie Pierce Farrier, and Sandra Desjardins

Using a General Survey to Determine Value: One Health Sciences Library's Experience Customizing the MISO Survey

Melissa Rethlefsen, AHIP and Sally Bowler-Hill



9:00 - 10:15 a.m.

SYMPOSIA

Collection Development Symposium | A106

Getting Started with Collection Development: An Interactive Workshop on Selecting Resources for Your Library Community

Have you been tasked with purchasing materials for your library but don't have formal training or are new to collection development? This interactive workshop will get you started with developing the skills and knowledge you need to determine which books, journals, and databases to purchase for your library community. Participants will connect in small groups with other librarians from similar settings to brainstorm practical steps to take during the decision-making process.

Basia Delawska-Elliott, MLIS, AHIP, is a medical librarian with Providence in Portland, OR. In her current position, she acts in an advisory capacity on collection development, evaluating new resources and suggesting purchases. In addition to her hospital library experience, Basia has worked in academic library acquisitions as a manager of approval plans, as an engagement librarian, supporting research, educational, and clinical needs, and as a member of collection development committees. Since 2020 Basia has been a part of the Nursing and Allied Health Resources and Services (NAHRS) working group updating the NAHRS Nursing Essential Resource List (NNERL), a tool for librarians supporting clinical and academic nursing.

Karen H. Gau, MLIS, is the Health Sciences Collections Librarian at Virginia Commonwealth University, where she evaluates resources for inclusion in VCU Libraries' health sciences collection. She created and maintains a list of collections-related DEIA projects and resources for MLA's Collection Development Caucus and is co-editor of Health Sciences Collection Development: An Overview of Fundamental Knowledge and Practices (2nd ed.).

Leadership & Management Symposium | B113-114 | Livestreamed

Inside and Out: Supporting and Empowering Your Staff by Promoting Their Achievements

If you are a library leader or manager at any level, you know the value of a committed and enthusiastic staff. In this session, Meghan Kowalski, an experienced team manager and presenter on library management, will help you discover your staff members' strengths and identify ways to promote their work and help them overcome self-doubt, imposter syndrome, and other hurdles to realizing their potential and bringing attention to their achievements. She will also help you see how promoting staff as individuals with unique skills benefits both your library as a whole and individual staff members. You'll learn primarily through a workshop in which you assess how you support and empower your staff and develop actionable steps to promote your staff members' achievements, skills, and projects inside and outside of libraries.

Meghan Kowalski, MSLS, is the Outreach and Reference Librarian at the University of the District of Columbia. She regularly presents and publishes on topics related to library leadership, marketing, and instruction. She authors the newsletters Content Prompt and The Weekly Wrap.

9:15 - 9:45 a.m.

Technology Showcase

Enabling Discovery of Biomedical Research Data: Introducing the Dataset Catalog

This presentation will discuss the importance of enabling discovery and advancing findability of biomedical research data and provide an overview of the recently launched Dataset Catalog and its underlying data model.

Sponsored by: National Library of Medicine

10:00 - 10:30 a.m.

Technology Showcase

EndNote, Clarivate, and the Systematic Review Lifecycle

Learn how EndNote and other Clarivate tools work together to support your reviews.

Sponsored by:  Clarivate™

10:00 - 10:30 a.m.

Transition Break

10:30 - 11:45 p.m.

PLENARY: NLM Update

Oregon Ballroom 201 - 204

Since its founding in 1836, the National Library of Medicine (NLM) has played a pivotal role in translating biomedical research into practice and is a leader in information innovation. As one of the twenty-seven institutes and centers at the National Institutes of Health, NLM advances research in bio-medical informatics and data science and is the world's largest medical library.

NLM will update attendees on resources and NLM's reorganization, including collections, health data standards, engagement, and curation.

Speaker: Dianne Babski, Director, User Services and Collection Division, National Library of Medicine

10:45 - 11:15 a.m.

Technology Showcase**BMJ sneak peek - Rising to the Comorbidities challenge**

One in three adults suffers from multiple chronic conditions – understanding and properly treating these patients is a challenge in both medical education and at the bedside. Based on user feedback, our popular BMJ Best Practice tool is being enhanced with a unique Comorbidities Manager. It is the only point-of-care tool that supports the management of the whole patient by including guidance on treating a patient's acute condition alongside their preexisting comorbidities. Join us for a brief product demo and an exclusive sneak peek at our new Comorbidities Manager.

Presenter: Ryan Rodriguez

Sponsored by: **BMJ**

11:30 a.m. - Noon

Technology Showcase**PubMed and PubMed Central Update**

Join the National Library of Medicine (NLM) for a brief update on recent changes, improvements, and developments in PubMed and PubMed Central (PMC). Attendees will have the opportunity to ask questions about PubMed and PMC, to be answered by NLM staff.

Sponsored by: *National Library of Medicine*

Noon - 1:15 p.m.

Lunch on Own | Hall A

Seating will be available in the exhibit hall.

Exhibitor Lunch & Learn | Portland Ballroom 252

Sponsored by: **jove**

1:30 - 2:45 p.m.

IMMERSION SESSIONS**Education, Information Services, Innovation & Research Practice Immersion Session | A105****Creating Interdisciplinary Interest in the All of Us Researcher Workbench Across Campus Communities**

The All of Us Data Training and Engagement for Academic Libraries Program, supported by the National Library of Medicine (NLM), aims to help campus libraries with the All of Us Researcher Workbench platform and equip library workers with the expertise to teach others to employ it, as a means of growing institutional research capacity and enhancing skills in biomedical and public health data. In this session, take a crash course in what this tool is, why it could be an asset to your institution, how to tailor messaging to the researchers, and connect with those who are working first-hand to promote meaningful use of the Researcher Workbench within their campus communities.

Kristi Sadowski, Brianna Chatmon, Pamela Buzzard, and Sarah Joseph

Professionalism & Leadership Immersion Session | A107-108**Pause on the Play: Prioritizing Wellness and Wellbeing in Health Sciences Libraries****DEI**

Sponsor: *African American Medical Librarians Alliance*

In light of the untimely passing of Black women leaders, Drs. Joanne A. Epps, Orinthia T. Montague, and Attorney Browne C. Lewis, this session will explore the issue of trauma and stress and their impact on leaders. This discussion will provide a platform for Black women leaders to share their insights, experiences, and challenges in navigating the demands of academia. From battling the stereotype of being “presumed incompetent” to contending with unfair performance expectations, this session sheds light on the unique challenges Black women leaders face. By fostering dialogue and sharing personal anecdotes, attendees will gain a deeper understanding of the toll that stress can take on their lives. This session will advocate for health sciences librarians from all backgrounds to prioritize wellness and well-being in their lives. Through reflection and discussion, participants will be prompted to consider: What are they willing to sacrifice for their career?

Kelsa Bartley, AHIP, Shannon D. Jones, AHIP, FMLA, Beverly Murphy, AHIP, FMLA, and Tamara M. Nelson, AHIP



1:30 - 2:45 p.m

LIGHTNING TALKS 5 | C123

Standing Strong in Electronic Resources: Strengthen Medical Libraries through a Consortium

NEW VOICES

Folasade Kolawole and Modupe Oluwabiyi

The Accidental Archivist: Interdepartmental Collaboration to Preserve Historical Records in a Community Hospital

NEW VOICES

Margaret Easbey

Potential Pitfalls of Using Abbreviations in PubMed Searches

Edwin Sperr, AHIP

Interactive, Inclusive and Impactful—Engaging Stakeholders in Collection Development Policy Revision

NEW VOICES

Li Ma and Megan von Isenburg, AHIP

Finding the Bottlenecks in Research Data Management

NEW VOICES

Jacqueline Gunther

Rethinking Reference Statistics: Optimizing Inputs for Better Outputs

Jessica Petrey and David King

Oops! They Did IT Again...the Finale

NEW VOICES

Janice Thompson

Integrating Journal Impact Factor Metrics into Citation Reports

Ruby Nugent and Liz Kellermeyer, AHIP

Investigating Machine-Actionable Data Management Plans and Shedding Light on Research Data Management Infrastructure at an Academic Medical Center

Michelle Yee and Nicole Contaxis

LIGHTNING TALKS 6 | C124

Developing Partnerships for Outreach to Indigenous Communities

DEI

Kiara Comfort

Evolution of a Virtual Medical Library Supporting a Top Pediatric Research Hospital

NEW VOICES

Karen Whyte and Kristen Burgess

Bridging the Gap between the Spanish-Speaking Roanoke Community and Medical Libraries

NEW VOICES **DEI**

Roberto Silva

Collaborative Networks among Different Schools to Enhance Access to Health Information in a Large-Scale University: Challenges and Opportunities: The UNAM Experience

Alejandra Martínez del Prado and David Flores Macias

Liaison Diaries: Two First-Year Health Science Librarians Reflect

NEW VOICES

Charlotte Vandervoort and Melissa Brand

Spotlighting PUMP Act Resources & Breast Practices for Incorporating Lactation Support into a Medical Library Workplace Culture

DEI

Tiffany Follin, AHIP-S

Strategies for Successful Onboarding in Health Sciences Librarianship: A New Librarian's Perspective

NEW VOICES

Loida Pan

Stronger Together: An All-Hands-on-Deck Weeding Project

Elizabeth Hinton, AHIP

The Organization Is Stronger When We Build It Together: A Collaborative, Librarian-Focused Organizational Redesign

Erika Severson

Unionization at a Health Sciences Library

NEW VOICES **DEI**

Caitlin Maloy, AHIP, Leah DeSantis, and Leslie Gascon, AHIP

A Remote Approach to Rebuilding Relationships with the College of Pharmacy

Dana Thimons

Inclusivity Initiatives for Health and Medical Library Workers: Recommendations for Practice Based on a Scoping Review

DEI

Jane Morgan-Daniel, AHIP and Amy Taylor



1:30 - 2:45 p.m

PAPERS**Clinical Support 2 | B111-112****Clinical Librarian Starter Pack***Ansley Stuart***Integration into MyChart:
A Pipe Dream?***Elizabeth Frakes, AHIP and Shawn Steidinger, AHIP***Utilization and Uptake of the
UpToDate Clinical Decision Support
Tool in Selected Medical Schools in
Uganda (August 2022–August 2023)****DEI***Alison Annet Kinengyere, Glorias Asimwe, Adrine Nyamwiza, Arthur Karemani, Julie Rosenberg, Nelson Twinamasiko, and Wilson Adriko***Education 6 | B117-118****From Instruction to Health
Sciences Librarianship: Coming
Together to Support Career Fluidity****NEW VOICES***Jocelyn Swick-Jemison, Nicole Thomas, Emily Carlin and Molly K. Maloney***More than the ABCs:
Assessing the Information
Needs of School Nurses***Annie Nickum, AHIP and Rosie Hanneke, AHIP***Integration of an Information
Literacy Component into a
Research Skills Training Program
for Nurse Leaders: Development,
Implementation, and Evaluation****NEW VOICES***Aida Marissa Smith, AHIP, Cyndi LaFond, and Vallire Hooper***Understanding Transitions of
Public Librarians to Health
Science Librarianship****NEW VOICES***Christopher Eaton, AHIP and Courtney Pyche, AHIP-P***Mixed Domains 3 | C121-122****Six Years of CAIFL: Pushing the
Limits of Librarianship Together***Marie Ascher, Amy Blevins, and Rachel Pinotti***Disaster Informatics over
Time: A Bibliometric Study
from 2016 to 2022****NEW VOICES***Ngan Tran***Textbook and Board Exam
Prep Resources: Trends in
Academic Health Sciences
Libraries Serving College of
Osteopathic Medicine Programs***Hal Bright, AHIP, Lori Fitterling, Molly Montgomery, Joanne Muellenbach, AHIP, and Kyle Robinson***Developing a Team-Based Approach
to Medical School Liaison Services****NEW VOICES***Lisa McGuire and Ryn Gagen***No SLAC'ing Here: Reviving
a Student Advisory Committee
to Better Engage and Include
Student Voices***Courtney Eger, Jenny Pierce, Natalie Tagge***Mixed Domains 4 | C125-126****If You Don't Count It, Did It
Happen? Centralizing and
Standardizing Library Statistics***Alisa Surkis***"Hello World!": Helping Medical
Librarians Up-Skill with Python
Basics***Genevieve Milliken and Justin de la Cruz***Health Misinformation
Resilience Programming in
Public Libraries: Community
Outreach by Academic Librarians***Kelsey Cowles, AHIP, Rebekah Miller, and Rachel Suppok***Creating Research Culture in a
Physician Assistant (PA) Program****NEW VOICES***Julie Horwath, Megan De Armond, and Katie Hoskins***Implementing Redcap
Research Data Collection
Services at Your Library****NEW VOICES***Dani Lapreze and David King*

1:30 - 2:45 p.m

SYMPOSIA

Data Management Symposium | A106

Data Allies: Building Institutional Support Networks

Developing partnerships with researchers can be particularly challenging. This session offers you a rare opportunity to learn about research enterprise-librarian partnerships from both the librarian and the researcher side.

Examples will highlight various campus partners and their role in supporting research, discussing how the collaboration was initiated and evolved over time, what worked and what didn't, and key takeaways you can use to expand your networks and develop future collaborations.

You'll leave the session with knowledge and skills that will help you:

- identify campus partners that support research
- explain the role of campus partners in the research landscape
- recognize the needs of campus partners and how you can support those needs
- apply strategies for engaging with other campus entities who serve the research community

Moderator

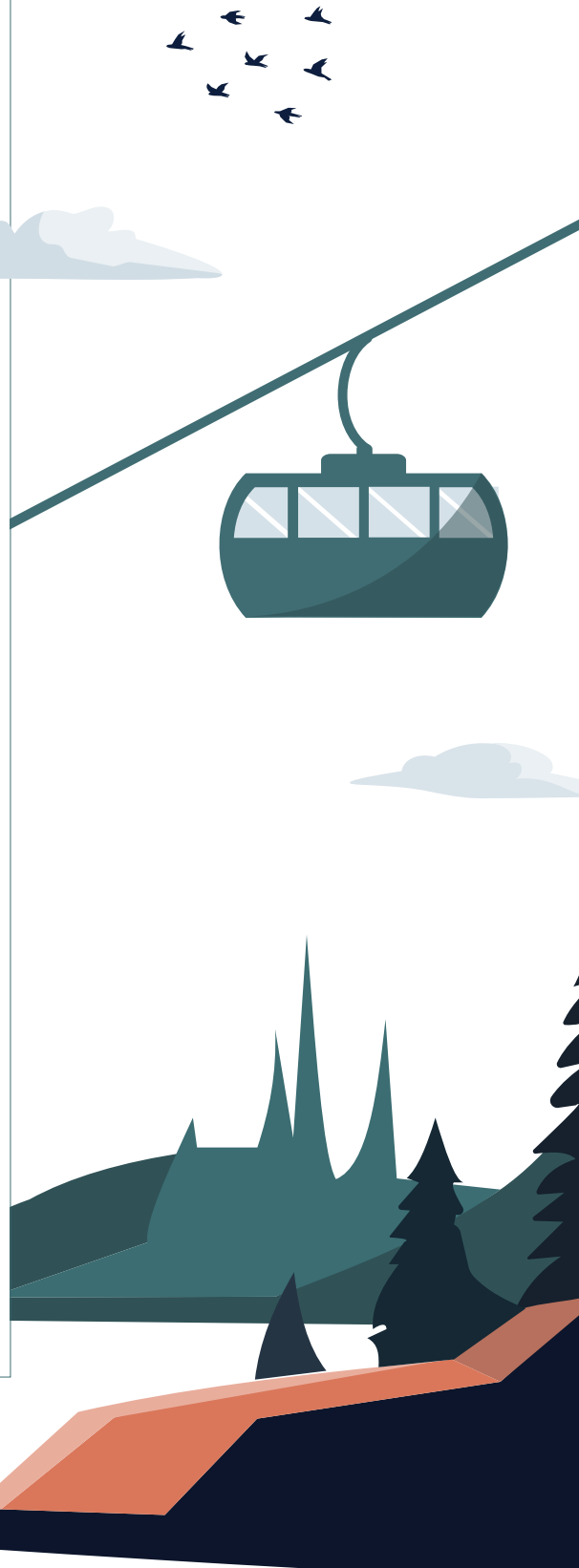
Sally Gore, MS LIS, is the manager of Research and Scholarly Communication Services for the Lamar Soutter Library, Chan Medical School, University of Massachusetts. In this role, she oversees the library's work with campus basic science and clinical researchers on campus, including expanding support and instruction in data services and leading all scholarly communication endeavors for the Library. Sally is also the Associate Editor of the *Journal of eScience Librarianship*.

Panelists

Andrea H. Denton, MILS, is the Research & Data Services Manager at the Claude Moore Health Sciences Library, University of Virginia, in which capacity she designs and delivers data services to researchers at UVA's academic medical center. She leads training on research data management best practices in acquisition, analysis, and sharing. She also partners with university research development staff to support the pursuit of external funding for large, collaborative projects.

Eugenia Opuda, MLS, MEd, is the Health and Human Services Librarian and an Associate Professor at the University of New Hampshire (UNH). She is the co-author of a chapter on integrating data management and information literacy skills in *Teaching Research Data Management* and author of the "Inclusion and Exclusion in Data" online training resource published in *Sage Skills: Student Success*.

Sara M. Samuel, MSI, is an Informationist at the Taubman Health Sciences Library, University of Michigan (U-M). She connects students, staff, faculty, researchers, and clinicians with the information they need to be successful. She is a founding member of the Research Data Stewardship Initiative (RDSI) working group at U-M, which aims to support all U-M researchers in managing and sharing research data. As part of RDSI, she helped refine U-M's newly implemented Research Data Stewardship Policy and co-chairs the RDSI Community of Practice, which connects U-M community members that are interested in or actively supporting research data.



1:30 - 2:45 p.m

SYMPOSIA

Collection Development Symposium | B113-114 | Livestreamed

AI, Machine Learning, and Collections: New Approaches and Tools for Description and Discovery

Artificial Intelligence (AI) and Machine Learning (ML) are set to revolutionize library catalogs and vendor platforms. Knowledge workers need to grasp the impacts, benefits, and challenges of integrating these technologies into their information ecosystems and workflows.

Our moderated panel will delve into the theory and practice of AI and machine learning, exploring how they influence the discovery and description of resources and library collections. Among the topics the session will address are:

- the roles of publishers, vendors, libraries, and human metadata creators in engaging with and leveraging these technologies
- the potential of AI tools to broaden library services and expertise
- key questions those working in collection development and management will have, such as the impact on library collections' discovery processes and how licensing and copyright considerations may inform the training sets for AI tools.

Moderator

Michelle Kraft, MLS, AHIP, FMLA is the Director of Library Services for the Cleveland Clinic Health System. Michelle is a member of a team of Cleveland Clinic librarians, cardiovascular researchers, and IBM staff who are experimenting with AI applications, particularly as they relate to the discovery of research. She also experiments with AI on her own to help users with their AI experiments and to find ways medical librarians can leverage AI for their needs.

Presenters

Judson Dunham is Senior Director of Product Management, ScienceDirect, in which capacity he leads a team of product managers responsible for developing and maintaining ScienceDirect, Elsevier's flagship full text search and discovery platform. He has been in product management at Elsevier for over 15 years, working in and around research discovery and workflow products including ScienceDirect, Scopus and Mendeley.

Philip E. Schreur, PhD, MLIS, is the Deputy University Librarian at Stanford University, in which capacity he oversees daily operations and linked-data project development for the Stanford University Libraries (SUL). He has worked in a variety of areas involving linked data, including using linked data to manage identity across traditional and digital resources and integrating linked data from multiple sources.

Itai Veltzman is the Director of Product Management for Ex Libris/Clarivate. With a focus on data and AI, he leads metadata and resources management for a Unified Library SAAS. He has driven Linked Open Data, AI-based Metadata creation, and other major initiatives and has conducted AI pilots for title matching involving normalization of fields and model selection."

2:45 - 3:00 p.m.

Transition Break

3:00 - 5:00 p.m.

PLENARY: MLA '24 Closing: An MLA Year of AI + Final Anniversary Celebration

Oregon Ballroom 201 - 204

Time to wrap up! Join us for the MLA '24 closing session, which will include a summary of the AI Summit on Saturday and more plans for MLA AI education to come, information to help you start planning for (an early) MLA '25, a wrap up (and treats) for MLA's 125th year, and more. Time to wrap up! Join us for the MLA '24 closing session, which will include a summary of the AI Summit on Saturday and more plans for MLA AI education to come, information to help you start planning for (an early) MLA '25, a wrap up (and treats) for MLA's 125th year, and more.



Poster Session

Monday, May 20, 2024 | Hall of Exhibits | 4:30 - 6:00 p.m.

Clinical Support

- 1 Increasing User Engagement by Decreasing Clicks: A Collaboration between Graduate Medical Education and Librarians**
NEW VOICES
Lindsey Baird and Emma O'Hagan, AHIP
- 2 Reaching Pediatricians at the Point-of-Care via ClinicalQ, an EHR-Embedded Clinical Question Support Service**
Christopher Stave and Connie Wong
- 3 Hospital Workplace Violence Prevention Programs: How Librarians Can Contribute**
Fred King, AHIP and Mark Marino
- 4 Joining Kindred Spirits to Develop an End-of-Life Resource Guide**
Michael Lindsay AHIP and Martha Earl, AHIP
- 5 One Hospital Library's Support for Their Nursing Research Council: Providing Both the Pebbles and Cement**
Edward Donald
- 6 "No More Boxes": Information Experiences of Students Transitioning to Clinical Education**
Nena Schvaneveldt, AHIP
- 7 Expanding Horizons: The Journey of Savitt Medical Library's Third Satellite Location in Reno, Nevada**
Katie Jefferson, Alexander Lyubechansky, and Michelle Rachal
- 8 Stronger Together, Sharing Knowledge: Collaborative Abstract Writing Workshops**
Andrea Harrow, AHIP-D

- 9 Automated Search Translators: Comparative Effectiveness of Polyglot Search, Ovid Translator, and MED-LINE Transpose**
Daniel Stuart
- 10 Building an ILL Automation Workflow in a Small Hospital Library Using Microsoft Forms and Power Automate**
NEW VOICES
Jonathan Ratliff

Education

- 12 Advocating for Inclusivity in Health Sciences Education with Librarian-Led Textbook Affordability Initiatives**
DEI
Christine Andresen
- 13 Creating a Library Video Working Group to Improve the Quality and Consistency of Online Video Tutorials for an Academic Health Center**
NEW VOICES
Brandon Wilkinson
- 14 Developing Research Literacy Skills in Dietetics and Nutrition Interns: Pilot Rotation to Meet the ACEND Competencies in Evidence-Based Practice**
Jaclyn Morales, AHIP-D, Farhana Ahmed, and Luz Elena Valencia-Penagos
- 15 Development and Implementation of a Book Discussion Group in a Consumer Health Library**
Dana Ladd, AHIP and Jackson Wright
- 16 From Conceptualizing to Creation: An Exploratory Look at Building a Health Literacy Toolkit**
NEW VOICES
Amy Minix and Sarah Vitelli

- 17 Incorporating Avoiding Plagiarism into a Drug Information Course**
Roslyn Kohlbrecher and Diana Sobieraj
- 18 Proactive Publishing, Metaliterate Learners, and Open Access, Oh My!**
Kathleen Phillips and Christina L. Wissinger
- 19 Reflecting on Inclusivity and Representation in Instruction Examples**
DEI
Eden Kinzel
- 20 Research Skills Education Framework: Online Library Training in a Clinical Setting**
Alice Anderson
- 21 Stronger Together: Librarian Involvement with Residents and Fellows**
Lisa Marks, AHIP and Neera Agrwal
- 22 Stronger Together: Using Library Electives to Fill Curriculum Gaps**
Lisa Marks, AHIP, Tara Bringham, AHIP, and Cynthia Chelf, AHIP
- 23 Stronger Together – Exploring Medical Students Experiences with ChatGPT**
NEW VOICES
Emily Hannum and Nadine Dexter, AHIP
- 24 Supporting Student Wellness through a Library Social Work Practicum Placement Program**
Beth Auten, AHIP and Ryan Harris, AHIP
- 25 Teaching the Art of Reading Research Articles: A Fruitful Pilot Project**
Christine Andresen

- 26** The Ongoing Struggle to Get It Right: Teaching Information Fluency to the First-Year Medical Students with a Case-Based Approach

NEW VOICES

Connie Wong and Evans Whitaker

- 27** The Use of Microlearning in Health Science Education

Carrie Adams

- 28** What Impression? Initial Findings on Baccalaureate Nursing Students' Recall and Attitudes toward Research

Jason Wardell

- 29** Incorporating Information Literacy into Area Health Education Center (AHEC) Curriculum

Jason Francis, Shaun Adamson, Diana Meiser, and Frederick Henderson

- 30** 'Righting' the Story: Libraries as Safe Spaces for Narrative Inquiry and Re-writing Stories about Equitable Oral Health

DEI

Eileen Harrington, Laura Moorhead, Andi Sauer, Michelle V. Moncrieffe, Esperanza Angeles Martinez Mier, Michelle McQuistan, Anubhuti Shukla, and Sheryl L. Syme

- 31** Clarity, Creativity, and Competition: Tailoring Library Research Instruction for High School Audiences

Kelsey Cowles, AHIP and Rachel Suppok

- 32** Developing a Pathway to MLA Consumer Health Information Specialization

Carolyn Martin, AHIP and Bennie Finch, Bobbi Newman, Jen Ortiz, Molly Knapp, AHIP, and Jamia Williams

- 33** Fostering Diversity Awareness in Nursing Students to Improve Health Disparities for Underserved Populations in Texas

DEI

Jamie Quinn, AHIP

- 34** Let's Chat (GPT)

Genevieve Milliken and Fred LaPolla

- 35** Librarian Support for Graduate Medical Education: 5 Year Check-In

Abby Adamczyk, AHIP, Gary Kaplan, AHIP, and John Caruso

- 36** Systematic Review(ish) Assignments, a Faculty Workshop: From Learning Objective to Successful Classroom

Anna Ferri and Jennifer Monnin

- 37** You've Got Mail: Designing Email Courses for Medical Library Users

NEW VOICES

Kaitlin Throgmorton and Dana Haugh

- 38** Innovation Teaching in the Classroom

NEW VOICES

Leslie Golamb, AHIP and Maud Mundava, AHIP

- 39** Librarian Contributions to Systematic Review Studies Published in Four Top Chaplaincy and Pastoral Care Journals

Kerry Dhakal

- 40** Practical Teaching, Practical Skills: The Librarian's Role in Clinical and Translational Research Courses for Dental Residents

Rachel Becker-Simpson

- 41** Practical Time-Saving Applications of ChatGPT for Clerkship Faculty

Martin Wood, AHIP and Terri Johnson, AHIP

- 42** Fellowship Programs' Experience with Library-Publisher Illustrated Curriculum: A Survey

Bryan Hull and Meagan Seay

Health Equity and Global Health

- 43** Developing Culturally Competent Consumer Health Literature to Support International Missions

DEI

Jamie Quinn, AHIP

- 44** Knowledge and Awareness of Health Information Professionals towards Telemedicine Services in Tanzania

NEW VOICES **DEI**

Mary Charles

- 45** Librarian Expertise in a Race in Medicine Faculty Toolkit Project

DEI

Marlowe Bogino, AHIP, Susan Cavanaugh, and Karen Mitchell

- 46** Move over Dr. Google: Assessing Large Language Learning Models' Ability to Accurately Answer Consumer Health Questions

NEW VOICES

Sunny Chung, AHIP and Laurel Scheinfeld, AHIP-D

- 47** Healthy People 2030: Developing Structured Evidence Queries for Discovery and Education

NEW VOICES

Courtney Pyche, AHIP-P, Anita Kuiken, AHIP, Erin Wentz, Erin Reardon, AHIP, Samantha Guss, Dani LaPreze, Laura Zeigen, AHIP, and John Mokonyama, AHIP



Poster Session

Monday, May 20, 2024 | Hall of Exhibits | 4:30 - 6:00 p.m.

48 Highlighting Health and Diversity: Curating Digital Exhibits to Promote Online Resources across Cultural Months

DEI

Ivan Portillo, AHIP and David Carson

49 Collaborating for Strength and Knowledge: A Tribal Libraries Program Field Trip to an Academic Health Sciences Library

NEW VOICES **DEI**

Deirdre Caparoso, Tracy Garcia, Cassandra Osterloh, and Deborah Rhue, AHIP

50 A Global Database for a Global Perspective

NEW VOICES **DEI**

Teresa Jewell, AHIP and Leslie Gascon, AHIP

51 Beyond the Numbers and Shelves: Diversity Inclusion, and Access in Action!

DEI

Maud Mundava, AHIP, and Dot Winslow

Information Management

52 Adding Author Identifier ORCID Metadata to PubMed Records – the Publisher’s Role

Konstantina Matsoukas, Robin O’Hanlon, and Jeanine McSweeney

53 Bridging the Virtual Gap: Expanding Online Library Access for Alumni

Nita Mailander, AHIP

54 Hello! We’re Here! Marketing Your Medical Library

Jennifer McKay

55 Bringing Health Literacy to Communities off the Road System

DEI

Jennifer McKay and Anna Bjartmarsdottir

56 One for All and All for One: Wrangling Our Usage of LibGuides

Brandi Tuttle, AHIP-D, Erin Simon, and Sarah Cantrell

57 Using Microsoft Teams to Manage Librarian Workflows for a Busy Evidence Synthesis Service

NEW VOICES

Abigail Smith, AHIP and Rebecca Kindon, AHIP

58 Working Together to Mint DOIs on Demand for a DSpace Repository

Tess Grynoch and Lisa Palmer, AHIP

59 Collating the Nomenclatural Development of Negative Media Use Behaviors in Databases of Scholarly Works: Considerations for Search Strategies

NEW VOICES **DEI**

Kaitlin Tiches

60 Cultivating a Search Hedge Repository for a Systematic Review Service

Shenita Peterson, John Nemeth, Mia S. White, AHIP, and Sharon Leslie, AHIP

61 Data Deep Dive: Strategic Analysis for Improving Reference Statistics

Jessica Petrey and David King

62 Systematic Review Service Support for an Institutional Data Retention Policy

Michelle Demetres, Allison Piazza, Diana Delgado, AHIP, Sarah Jewell, Andy Hickner, Drew Wright, and Genevieve Coe

63 Assessing the Efficiency of Data Science Programs in Enhancing Big Data Analysis Skills among Health Libraries and Information Scientists

NEW VOICES

Rajabu Simba and Haruna Hussein

64 Generalist Repository Ecosystem Initiative (GREI) to Support NIH Data Sharing and Discovery

NEW VOICES

Ana Van Gulick, Julie Wood, and Kristi Holmes

65 Revelations from Weeding: Historical Decisions and Implications for Current Collection Management

Suzanne Fricke, AHIP and Ann Dyer, AHIP

66 Power in Numbers Multi Campus License Saving Initiative

Brittany Haliani, AHIP and Jeannine Creazzo, AHIP

67 Expanding Content in a Health Sciences Library Discovery Service: Changing the Default Search Scope in a Shared Consortium Environment

Sara Hoover, AHIP and JoLinda Thompson, AHIP

Information Services

68 Building Author Services: Advancing Publication Support for Health Science Researchers

Sara Hoover, AHIP and Ruth Bueter

69 A Library-CTSI Collaboration to Support Researcher Compliance with the 2023 NIH Policy for Data Management and Sharing

Andrea Denton, Lucy Carr Jones, and Bart Ragon

71 Creating and Validating an Institutional Search Hedge

Christi Piper, AHIP and Ben Harnke



72 Current Status and Future Plan of Research Support Services (RSS) in Academic Medical Libraries in Taiwan

Tzu-Heng Chiu

73 Improving the Library User Experience at a Dual Health Sciences Library

NEW VOICES

Naomi Bishop, AHIP-D and Victoria Caine

74 Open Access Programming: Building a Strong Foundation

NEW VOICES

Sharon Duffy and David Trillo

75 Overcoming the Challenge of Finding Comics Studies in Medline

NEW VOICES

William Jacobs

76 QR Codes: Bridging the Gap in 24/7 Library Accessibility

NEW VOICES

Ashley Curran and David DeSimone

77 Scoping Out What Our Customers Need: Development of a Scoping Review Toolkit

Alicia Livinski, Gisela Butera, Nancy Terry, Stacy Brody, AHIP, Jaime Friel Blanck, AHIP, Nancy L. Muir, and Tracy C. Shields, AHIP

78 Supporting Institutional Scholarship through Journal Hosting

Heather Brown

79 Together We Thrive: Assessing Library Access and Engagement in Nursing Education

NEW VOICES

Lisa Raney and Jennifer Pettigrew, AHIP

80 Using Google Analytics Data API to Present “Most Visited” Resources to Library Website Visitors

NEW VOICES

Aaron Pinero

81 Grounded in Truth: Crafting an AI Platform to Respond to Consumer Health Questions Utilizing NLM Products

NEW VOICES

Alex Henigman

82 Improving Peer Review of Systematic Reviews by Involving Librarians and Information Specialists: Preliminary Results of a Randomized Controlled Trial

Melissa Rethlefsen, AHIP, Kate Nyhan, Tara Brigham, AHIP, A. Patricia Ayala, David Blanco de Tena-Dávila, David Moher, Jamie Kirkham, Lex Bouter, Maurice Zeegers, Sara Schroter, Shona Kirtley, Whitney Townsend, and Holly Grossetta Nardini, AHIP

83 Making the Most of Artificial Intelligence and Large Language Models: A Novel Approach for Book Recommendation and Discovery in Medical Libraries

Ivan Portillo, AHIP and David Carson

84 Rural Hospital Library Navigation System Design Concept

NEW VOICES **DEI**

Kuo Liang Huang, AHIP

85 Using Bibliometric Analytic Techniques to Measure the Scholarly Impact of a Health Professions Education Teaching Academy

Sarah Cantrell, Beth Blackwood, Deborah Engle, Diana McNeill, and Kristin Dickerson

86 An Environmental Scan of Evidence Synthesis Projects Published at Yale University and Yale New Haven Hospital

Alyssa Grimshaw and Holly Grossetta Nardini, AHIP

87 Designing Tools and Resources to Support Liaison Librarian Success

NEW VOICES

Courtney Pyche, AHIP-P, Lauren Adkins, AHIP, Hannah Norton, Michelle Tennant, and Alyson Young

88 Improving Wayfinding and Policy Explanation via a Signage Audit

Hannah Norton and Matthew Daley

89 So You’re Opening a New Medical School? A Preliminary Examination of Academic Medical School Library Resources

Kevin Pardon and Janice Hermer

90 “Laboring with Hope” to Improve Maternal Health Disparities

DEI

Carolyn Martin, AHIP and Emily Hamstra

Innovation & Research Practice

91 A Deep Dive into the Data: Categorizing the Raw Data from IPD Plans in ClinicalTrials.gov to Facilitate Comparisons

Sara Samuel, Diane Wilson, and Emily Fleming

92 AI Usage in Medical Libraries: An Exploratory Mixed-Methods Study

NEW VOICES

Ariah Long and Paul Fontelo



Poster Session

Monday, May 20, 2024 | Hall of Exhibits | 4:30 - 6:00 p.m.

- 93** Beyond the Survey: Collecting Well-Rounded Feedback from the Library Service Desk

NEW VOICES

Katie Kidwell and Katherine Morley Eramo

- 94** Delivering on Space as Service: Survey Use to Direct Library Design

NEW VOICES

Carrie Adams and Christopher Eaton, AHIP

- 95** Evaluating Library Data Services Consultations

Lucy Carr Jones, Andrea Denton, and Hannah Pollard

- 96** Impact of the ECHO Librarian Role on Project ECHO's Tele-Mentoring Model

Bonnie Leigh Reifsteck and Kent Nor-sworthy

- 97** Plagiarism Checking Procedures among Oncology Research Journals

Johanna Goldberg, Kendra Godwin, Robin O'Hanlon, and Celine Soudant

- 98** Advancing Biomedical Publishing and Education: Hospital Librarians at the Forefront of Artificial Intelligence in Academic Healthcare

Stacy Posillico, AHIP-D

- 99** Unconference Experiences: Two Case Studies of Planning and Execution of Non-traditional Virtual and Physical Events with Resources to Organize Your Own

Daniel Verbit, AHIP and Tony Nguyen, AHIP

Professionalism & Leadership

- 100** Academic Health Sciences Library Leadership: A Twenty-Year Journey

Teresa Knott, AHIP, FMLA and Shannon Jones, AHIP, FMLA

- 101** Addressing Health Misinformation: Evidence-Based Strategies and Community Engagement at a Virtual Symposium

NEW VOICES

Margie Sheppard, Miles Dietz-Castel, Veronica Milliner, Carolyn Martin, AHIP, and Bobbi Newman

- 102** Bridging the Gap: Engaging the LIS Student in Health Sciences Librarianship

NEW VOICES **DEI**

Annisija Hunter and Sarah Villere

- 103** Creating Effective Training Materials for a New Instruction System

Sara Samuel, Jamie Niehof, and Kate Saylor

- 104** Exploring Donor Relationship Management in Academic and Health Sciences Libraries: A Pilot Survey on Scale Purification

Alla Iansavitchene and Amanda Ross-White, AHIP

- 105** Leading by Example: Strategies for Authentic Leadership

Teri Shiel and Rich McIntyre Jr.

- 106** Medical and Health Science Librarian Advertised Salaries Compared to the Living Wage and the MLA Salary Survey: An Exploration of Alignment

DEI

David Petersen, AHIP and Emily Harris

- 107** Salary Survey 2023

Stephanie Friree Ford, Jessica Killham, Karen Alcorn, Lisa Adriani, AHIP, Lisa Liang Philpotts, and Meredith Solomon, AHIP

- 108** Sharing a (Cyber) Cup: Using Virtual Coffee Chats to Reengage Participation and Promote Connections

Angela Murrell and Judy Kraemer

- 109** Stronger Together: Supporting Early Career Librarians and Librarians New to Health Sciences, an MLA Chapter Task Force

Kristi Torp and Casey Phillips, AHIP

- 110** The Nature of Change: Navigating Organizational Upheaval through Teamwork

Stephanie Henderson, Cayla Robinson, Lauren Robinson, Rebecca Morgan, and Jason Keinsley

- 111** Unboxing the Potential of Instagram: A Graphic Medicine Collection Development Collaboration

Tiffany Follin, AHIP-S, Dawn Frood, and Agrippina Fadel

- 112** Value of Advisory Groups

Linda Walton, AHIP, Erica Lake, AHIP, Bobbi Newman, Darlene Kaskie, Jacqueline Leskovec, Miles Dietz-Castel, and Nora Barnett

- 113** Where Are All the Job Candidates? Geographic Considerations for Recruitment

Gregg A. Stevens, AHIP, Andy Hickner, Allison Piazza, Francisco Fajardo, AHIP, and David Petersen, AHIP

- 114** Teaching Telehealth: Aiding Digital Health Equity in Libraries

Faith Steele, AHIP, Darlene Kaskie, George Strawley, Tiffany Chavis, and Katie Pierce Farrier





On-Demand Only Posters

A Survey of Academic Librarians and Their Awareness, Perceptions, and Implementation of the ACRL Cultural Competency Standards

DEI

Xan Goodman, AHIP-D and Rong Tang

Building Strong Bonds with Students: Creating an Award for Student Excellence in Library Research

Anna Krامل and Kim Meeks

Designing an Evidence-Based Health Care Course during UME Curriculum Renewal: UME 1 Program Results

Elizabeth Irish, AHIP, Enid Geyer, AHIP, Traci Tosh, Rebecca Keller, and Timothy Palmieri

Empowering Expertise: Unveiling the Preferred Pathways of Health Science Librarians in Professional Development

NEW VOICES

Margarita Shawcross

Googling Depression: A Critical Appraisal of Online Health Information

Misa Mi

Inclusivity Benefits Everyone: A Guide for Health Professionals Working with Transgender Populations

NEW VOICES DEI

Jo Dienst

It Takes a Village: How New Connections Influenced the Development of a Graphic Medicine Collection

Janet Chan, AHIP, Melinda Berg, AHIP, Kystal Bullers, AHIP, and Tsu Yin Lue

Keys to Success: The Evolution of a Mandatory Medical Informatics Longitudinal Course in an Undergraduate Medical Curriculum

Elizabeth Irish, AHIP, Enid Geyer, AHIP, and Traci Tosh

Let's Discuss: The History of Medical Libraries and Medical Librarianship

Margot Malachowski

Mindful Curation: Mastering Resource Evaluation in Academia

Holly Hubenschmidt and Heidi Vix

No Need to Reinvent the Wheel: Revising Existing Library Tools to Increase Student Engagement with Problem-Based Learning Resources

NEW VOICES

Jennifer Silverman

USF Health Library Book Club: Creating Connections

Janet Chan, AHIP, Kystal Bullers, AHIP, Tsu Yin Lue, Allison Howard, Ardis Hanson, and Stephanie Tomlinson, AHIP

Creating a Data Repository Finder with a Little Help from Our Friends: Assisting Researchers and Managing Volunteers

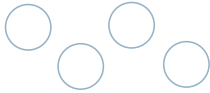
Ummea Urmi, Nicole Contaxis, and Collin Schwantes

Enhancing User Experience of an Institutional Data Catalog Using Contributor Survey Data

Ummea Urmi and Michelle Yee

Exhibit Hall Map

POSTERS



1029	1027	1025
------	------	------

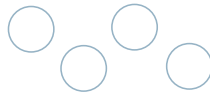
1021	1019	1017	1015	1013	1011
------	------	------	------	------	------

1007	1003
------	------

1028	1026	1024
929	927	925

1020	1018	1016	1014	1012	1010
921	915		913	911	

903



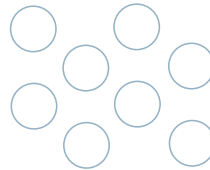
918	916	914	912	910
819	817	815	813	811

803

TECH THEATER

820	818	814	810
721	719	715	713 711

603



720	718	716	714	712	710
621	619	617	615	613	611

618	614	612	610
521	519	515	513 511

503

520	518	516	514	512	510
-----	-----	-----	-----	-----	-----

506	502
-----	-----

ENTRANCE

Exhibitors

AAAS/Science	614
American Academy of Pediatrics	817
American College of Physicians	515
American Pharmacists Association (APhA)	612
American Psychiatric Association Publishing	914
American Psychological Association	513
Anatomage	918
Annual Reviews	720
Bioscientifica	718
BMJ	502
Cabells	721
Clarivate	1003
Covidence	712
Doody Enterprises, Inc.	710
EBSCO Health	503
Elsevier	803
epocrates	713
GIDEON Online	610
HARRASSOWITZ	912
Health Affairs	617
JAMA Networks	611
IOS Press	911
JoVE	719
Karger Publishers	815
LibLynx	910
Lucidea	818
Mary Ann Liebert, Inc.	1010
McGraw Hill	903

MLA	925
MLA, MLA Booth	915
MLA, Photo Booth	921
Neurosurgical Atlas	715
Nisha Creative LLC	512
OpenAthens	510
Oxford University Press	819
Radiological Society of North America (RSNA)	916
RedacTek	711
Research Solutions	814
Rowman & Littlefield	913
Sketchy	1011
SLACK Journals	615
Springer Nature	511
STAT	714
Taylor & Francis Group	811
TDNET INC	1007
TDS Health	613
The Company of Biologists	813
The Journal of Rheumatology	506
Thieme Publishers	618
Third Iron	716
Toltech	820
TRC Healthcare	621
VisualDx	619
Wiley	810
Wolters Kluwer	603



Dining at Oregon Convention Center

Saturday, May 18

Drip Coffee Snack Cart

Pre-Function A

9:00 a.m. - 1:30 p.m.

Sunday, May 19

Portland Roasting Café

Pre-Function C

7:00 a.m. - 3:00 p.m.

Orbit Café

Open to Hall A and Lobby

10:30 a.m. - 1:30 p.m.

Dragon Boat Grill

Open to Hall C and Lobby

10:30 a.m. - 1:30 p.m.

Stir Bistro & Lounge

Must be age 21+

Level 2

10:30 a.m. - 1:30 p.m.

Food Truck Fleet

North Plaza

11:30 a.m. - 1:30 p.m.

Monday, May 20

Portland Roasting Café

Pre-Function C

7:00 a.m. - 2:00 p.m.

Tuesday, May 21

Portland Roasting Café

Pre-Function C

7:00 a.m. - 3:00 p.m.

Orbit Café

Open to Hall A and Lobby

10:30 a.m. - 1:30 p.m.

Dragon Boat Grill

Open to Hall C and Lobby

10:30 a.m. - 1:30 p.m.

Stir Bistro Lounge

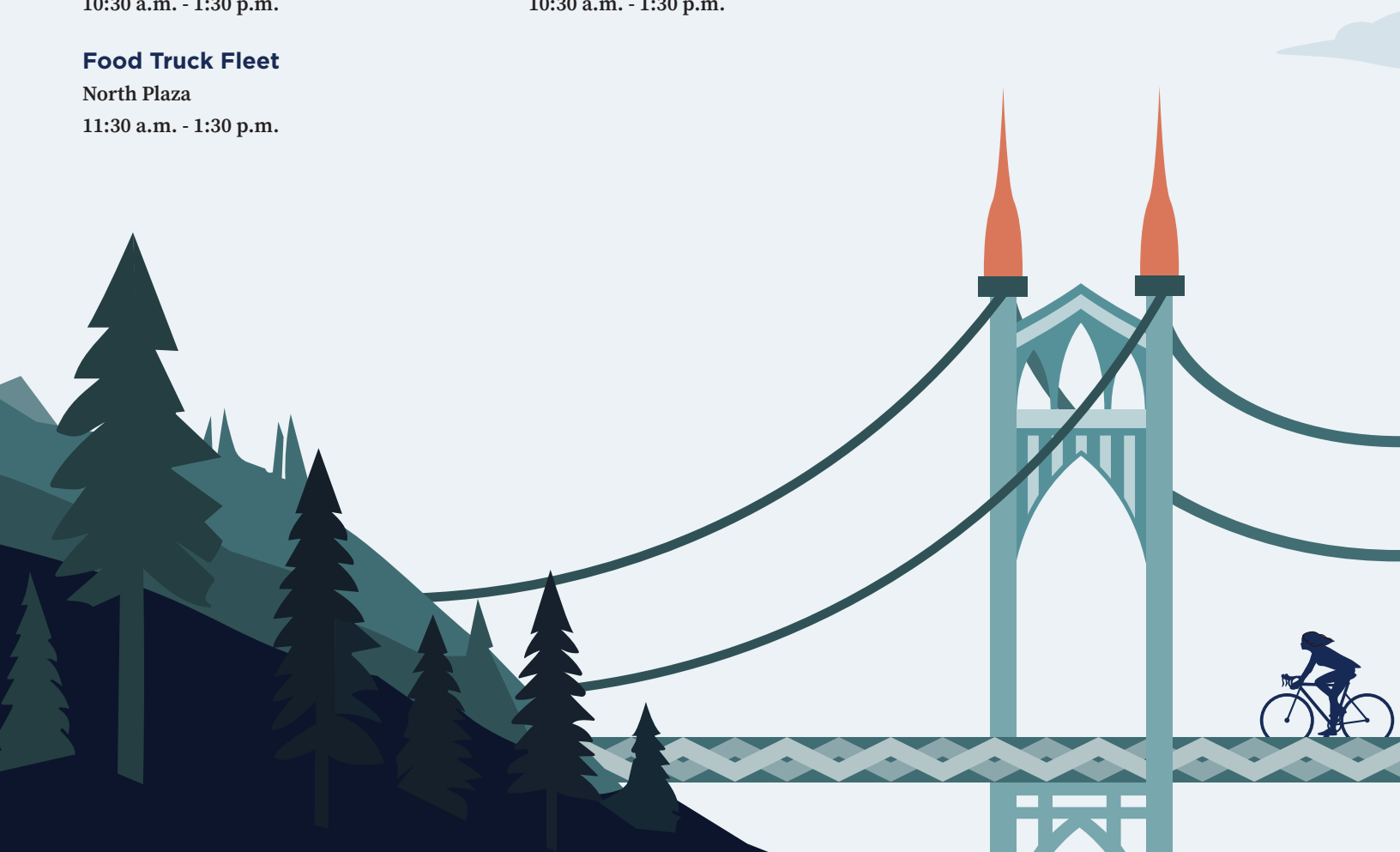
Must be age 21+

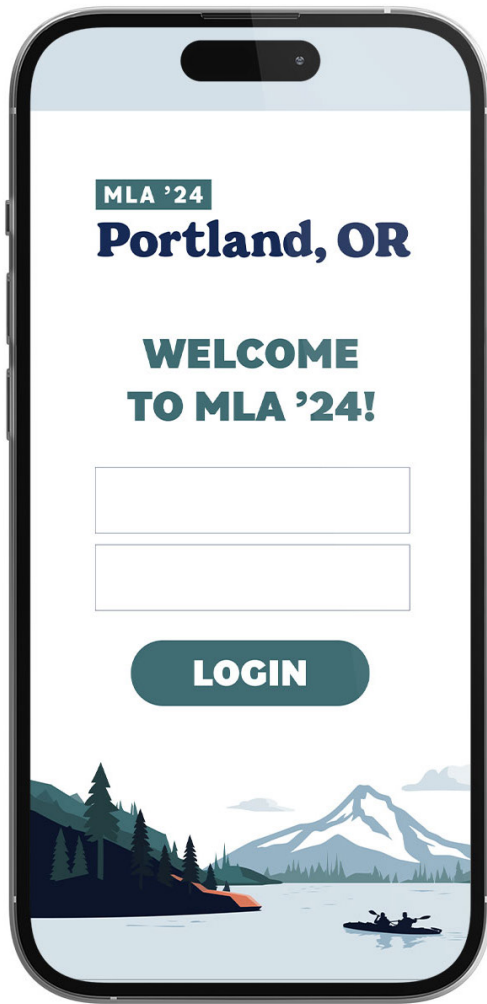
Level 2

10:30 a.m. - 1:30 p.m.



OFFICIAL PORTLAND DINING GUIDE MLA '24





Download the MLA '24 App

App sponsored by  Wolters Kluwer

Stay up-to-date
with the latest in
the MLA '24 app



**SCAN TO
DOWNLOAD**



**OFFICIAL
PORTLAND
DINING GUIDE
MLA '24**

